

CERTIFICATION OF OWNERSHIP AND DEDICATION:

I, THE FORESTOR (USA REAL ESTATE GROUP, INC., AS PROPRIETOR(S)), HAVE CAUSED THE LAND DESCRIBED IN THE WITHIN PLAT TO BE SURVEYED, Laid OUT AND SITE PLANNED TO BE KNOWN AS TEALWOOD ESTATES PHASE I, A PART OF SECTION 17, BALDWIN COUNTY, ALABAMA, AND THAT THE STREETS, DRIVES AND EASEMENTS AS SHOWN ON SAID PLAT ARE HEREBY DEDICATED TO THE USE OF THE PUBLIC, OR PRIVATE USE AS NOTED.

DATED THIS 31<sup>ST</sup> DAY OF OCTOBER, 2025  
*[Signature]*  
VICE PRESIDENT

CERTIFICATION BY NOTARY PUBLIC:

STATE OF ALABAMA  
COUNTY OF BALDWIN  
I, *[Signature]*, a Notary Public in and for the County of Baldwin, in the State of Alabama, do hereby certify that the foregoing instrument, and who is known to me, is signed to the FORESTOR (USA REAL ESTATE GROUP, INC.) and with full authority, BEFORE ME ON THIS DAY, BEING INFORMED OF THE CONTENTS OF THIS INSTRUMENT, HE AS SUCH INSTRUMENT, AND WITH FULL AUTHORITY, EXECUTE THE SAME VOLUNTARILY FOR AND AS THE ACT OF SAID FORESTOR (USA REAL ESTATE GROUP, INC.).  
Dated: 31<sup>ST</sup> DAY OF OCTOBER, 2025  
NOTARY PUBLIC: *[Signature]* My Commission Expires: October 31, 2028

CERTIFICATE OF APPROVAL BY THE BALDWIN COUNTY PLANNING AND ZONING COMMISSION

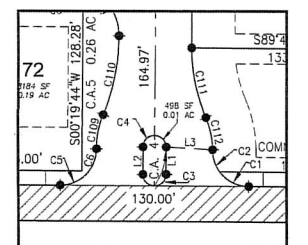
THE UNDERSIGNED, AS *[Signature]* OF BALDWIN COUNTY PLANNING AND ZONING COMMISSION, HEREBY CERTIFIES THAT, AT THE HEARING OF THE COMMISSION, APPROVED THE WITHIN PLAT FOR THE RECORDING OF SAME IN THE PROBATE OFFICE OF BALDWIN COUNTY, ALABAMA, THIS 30<sup>TH</sup> DAY OF OCTOBER, 2025.  
BALDWIN COUNTY PLANNING AND ZONING COMMISSION  
BY: *[Signature]*  
ITS: Chairman

CERTIFICATE OF APPROVAL BY THE BALDWIN COUNTY PLANNING DIRECTOR:

THE UNDERSIGNED, AS DIRECTOR OF THE BALDWIN COUNTY PLANNING AND ZONING DEPARTMENT, HEREBY APPROVES THE WITHIN PLAT FOR THE RECORDING OF SAME IN THE PROBATE OFFICE OF BALDWIN COUNTY, ALABAMA, THIS 30<sup>TH</sup> DAY OF OCTOBER, 2025.  
PLANNING DIRECTOR: *[Signature]*

CERTIFICATE OF APPROVAL BY THE COUNTY ENGINEER

THE UNDERSIGNED, AS COUNTY ENGINEER OF BALDWIN COUNTY, ALABAMA, HEREBY APPROVES THE WITHIN PLAT FOR THE RECORDING OF SAME IN THE PROBATE OFFICE OF BALDWIN COUNTY, ALABAMA, THIS 30<sup>TH</sup> DAY OF OCTOBER, 2025.  
COUNTY ENGINEER: *[Signature]*



MORTGAGEE'S ACCEPTANCE:

IN WITNESS WHEREOF, THE MORTGAGEE, THE OWNERS OF THE MORTGAGE OF THE WITHIN PLAT, HEREBY APPROVE THE WITHIN PLAT FOR THE RECORDING OF SAME IN THE PROBATE OFFICE OF BALDWIN COUNTY, ALABAMA, THIS 30<sup>TH</sup> DAY OF OCTOBER, 2025.  
BY: *[Signature]* ITS: Assistant Vice President

CERTIFICATION BY NOTARY PUBLIC:

STATE OF ALABAMA  
COUNTY OF BALDWIN  
I, *[Signature]*, a Notary Public in and for the County of Baldwin, in the State of Alabama, do hereby certify that the foregoing instrument, and who is known to me, is signed to the FORESTOR (USA REAL ESTATE GROUP, INC.) and with full authority, BEFORE ME ON THIS DAY, BEING INFORMED OF THE CONTENTS OF THIS INSTRUMENT, HE AS SUCH INSTRUMENT, AND WITH FULL AUTHORITY, EXECUTE THE SAME VOLUNTARILY FOR AND AS THE ACT OF SAID FORESTOR (USA REAL ESTATE GROUP, INC.).  
Dated: 31<sup>ST</sup> DAY OF OCTOBER, 2025  
NOTARY PUBLIC: *[Signature]* My Commission Expires: October 31, 2028

CERTIFICATE OF APPROVAL BY BALDWIN COUNTY SEWER SERVICE

THE UNDERSIGNED, AS AUTHORIZED BY BALDWIN COUNTY SEWER SERVICE, HEREBY APPROVES THE WITHIN PLAT FOR THE RECORDING OF SAME IN THE PROBATE OFFICE OF BALDWIN COUNTY, ALABAMA, THIS 30<sup>TH</sup> DAY OF OCTOBER, 2025.  
AUTHORIZED REPRESENTATIVE: *[Signature]*

CERTIFICATE OF APPROVAL BY BALDWIN COUNTY EMC

THE UNDERSIGNED, AS AUTHORIZED BY BALDWIN COUNTY EMC, HEREBY APPROVES THE WITHIN PLAT FOR THE RECORDING OF SAME IN THE PROBATE OFFICE OF BALDWIN COUNTY, ALABAMA, THIS 30<sup>TH</sup> DAY OF OCTOBER, 2025.  
AUTHORIZED REPRESENTATIVE: *[Signature]*

CERTIFICATE OF APPROVAL BY RIVERIA UTILITIES (WATER)

THE UNDERSIGNED, AS AUTHORIZED BY RIVERIA UTILITIES, HEREBY APPROVES THE WITHIN PLAT FOR THE RECORDING OF SAME IN THE PROBATE OFFICE OF BALDWIN COUNTY, ALABAMA, THIS 30<sup>TH</sup> DAY OF OCTOBER, 2025.  
AUTHORIZED REPRESENTATIVE: *[Signature]*

CERTIFICATE OF APPROVAL BY AT&T BROADBAND

THE UNDERSIGNED, AS AUTHORIZED BY AT&T, HEREBY APPROVES THE WITHIN PLAT FOR THE RECORDING OF SAME IN THE PROBATE OFFICE OF BALDWIN COUNTY, ALABAMA, THIS 30<sup>TH</sup> DAY OF OCTOBER, 2025.  
AUTHORIZED REPRESENTATIVE: *[Signature]*

CERTIFICATE OF APPROVAL BY E-911 ADDRESSING:

THE UNDERSIGNED, AS AUTHORIZED BY E-911 ADDRESSING, HEREBY APPROVES THE WITHIN PLAT FOR THE RECORDING OF SAME IN THE PROBATE OFFICE OF BALDWIN COUNTY, ALABAMA, THIS 30<sup>TH</sup> DAY OF OCTOBER, 2025.  
AUTHORIZED REPRESENTATIVE: *[Signature]*

TEALWOOD ESTATES  
PHASE I  
DETAILED GEOMETRY  
SHEET 2 OF 2

9/23/2025

FINAL PLAT

FORESTAR REAL ESTATE GROUP INC



DRAWN: ASC  
CHKD: JDD  
PROJ: MGR DED  
SCALE: 1"=60'  
PROJECT: 20221161  
FILE: FINAL PLAT PH1  
SHEET: 2 OF 2

LINE BEARING DISTANCE

L1	S00°00'00"E	18.37
L2	N00°19'44"E	18.73
L3	S00°00'00"E	50.00
L4	N00°00'00"E	50.00
L5	S00°00'00"E	50.00
L6	N00°00'00"E	50.00
L7	S00°00'00"E	50.00
L8	N00°00'00"E	50.00
L9	S00°00'00"E	50.00
L10	N00°00'00"E	50.00
L11	S00°00'00"E	50.00
L12	N00°00'00"E	50.00
L13	S00°00'00"E	50.00
L14	N00°00'00"E	50.00
L15	S00°00'00"E	50.00
L16	N00°00'00"E	50.00
L17	S00°00'00"E	50.00
L18	N00°00'00"E	50.00
L19	S00°00'00"E	50.00

CURVE RADIUS ARC LENGTH CHORD BEARING CHORD LENGTH

C1	25.00	23.16	S00°00'00"E	23.16
C2	25.00	16.10	S19°07'03"E	15.89
C3	8.00	24.87	S00°00'00"E	24.87
C4	8.00	25.13	N00°00'00"E	25.13
C5	25.01	33.15	N00°00'00"E	33.15
C6	25.01	18.12	N00°00'00"E	18.12
C7	36.00	45.37	N00°00'00"E	45.37
C8	36.00	11.18	N00°00'00"E	11.18
C9	25.00	6.31	N00°00'00"E	6.31
C10	25.00	11.88	N00°00'00"E	11.88
C11	60.00	68.97	N00°00'00"E	68.97
C12	60.00	40.30	N00°00'00"E	40.30
C13	60.00	40.34	N00°00'00"E	40.34
C14	60.00	39.71	N00°00'00"E	39.71
C15	60.00	20.09	N00°00'00"E	20.09
C16	60.00	13.67	N00°00'00"E	13.67
C17	60.00	59.71	N00°00'00"E	59.71
C18	25.00	25.10	N00°00'00"E	25.10
C19	25.00	13.67	N00°00'00"E	13.67
C20	25.00	25.10	N00°00'00"E	25.10

CURVE RADIUS ARC LENGTH CHORD BEARING CHORD LENGTH

C21	25.00	24.41	N00°00'00"E	24.41
C22	25.00	14.88	N00°00'00"E	14.88
C23	25.00	24.87	N00°00'00"E	24.87
C24	25.00	25.13	N00°00'00"E	25.13
C25	25.00	60.00	N00°00'00"E	60.00
C26	25.00	60.00	N00°00'00"E	60.00
C27	25.00	60.00	N00°00'00"E	60.00
C28	25.00	60.00	N00°00'00"E	60.00
C29	25.00	60.00	N00°00'00"E	60.00
C30	25.00	60.00	N00°00'00"E	60.00
C31	25.00	60.00	N00°00'00"E	60.00
C32	25.00	60.00	N00°00'00"E	60.00
C33	25.00	60.00	N00°00'00"E	60.00
C34	25.00	60.00	N00°00'00"E	60.00
C35	25.00	60.00	N00°00'00"E	60.00
C36	25.00	60.00	N00°00'00"E	60.00
C37	25.00	60.00	N00°00'00"E	60.00
C38	25.00	60.00	N00°00'00"E	60.00
C39	25.00	60.00	N00°00'00"E	60.00
C40	25.00	60.00	N00°00'00"E	60.00

CURVE RADIUS ARC LENGTH CHORD BEARING CHORD LENGTH

C41	25.00	24.41	N00°00'00"E	24.41
C42	25.00	14.88	N00°00'00"E	14.88
C43	25.00	24.87	N00°00'00"E	24.87
C44	25.00	25.13	N00°00'00"E	25.13
C45	25.00	60.00	N00°00'00"E	60.00
C46	25.00	60.00	N00°00'00"E	60.00
C47	25.00	60.00	N00°00'00"E	60.00
C48	25.00	60.00	N00°00'00"E	60.00
C49	25.00	60.00	N00°00'00"E	60.00
C50	25.00	60.00	N00°00'00"E	60.00
C51	25.00	60.00	N00°00'00"E	60.00
C52	25.00	60.00	N00°00'00"E	60.00
C53	25.00	60.00	N00°00'00"E	60.00
C54	25.00	60.00	N00°00'00"E	60.00
C55	25.00	60.00	N00°00'00"E	60.00
C56	25.00	60.00	N00°00'00"E	60.00
C57	25.00	60.00	N00°00'00"E	60.00
C58	25.00	60.00	N00°00'00"E	60.00
C59	25.00	60.00	N00°00'00"E	60.00
C60	25.00	60.00	N00°00'00"E	60.00