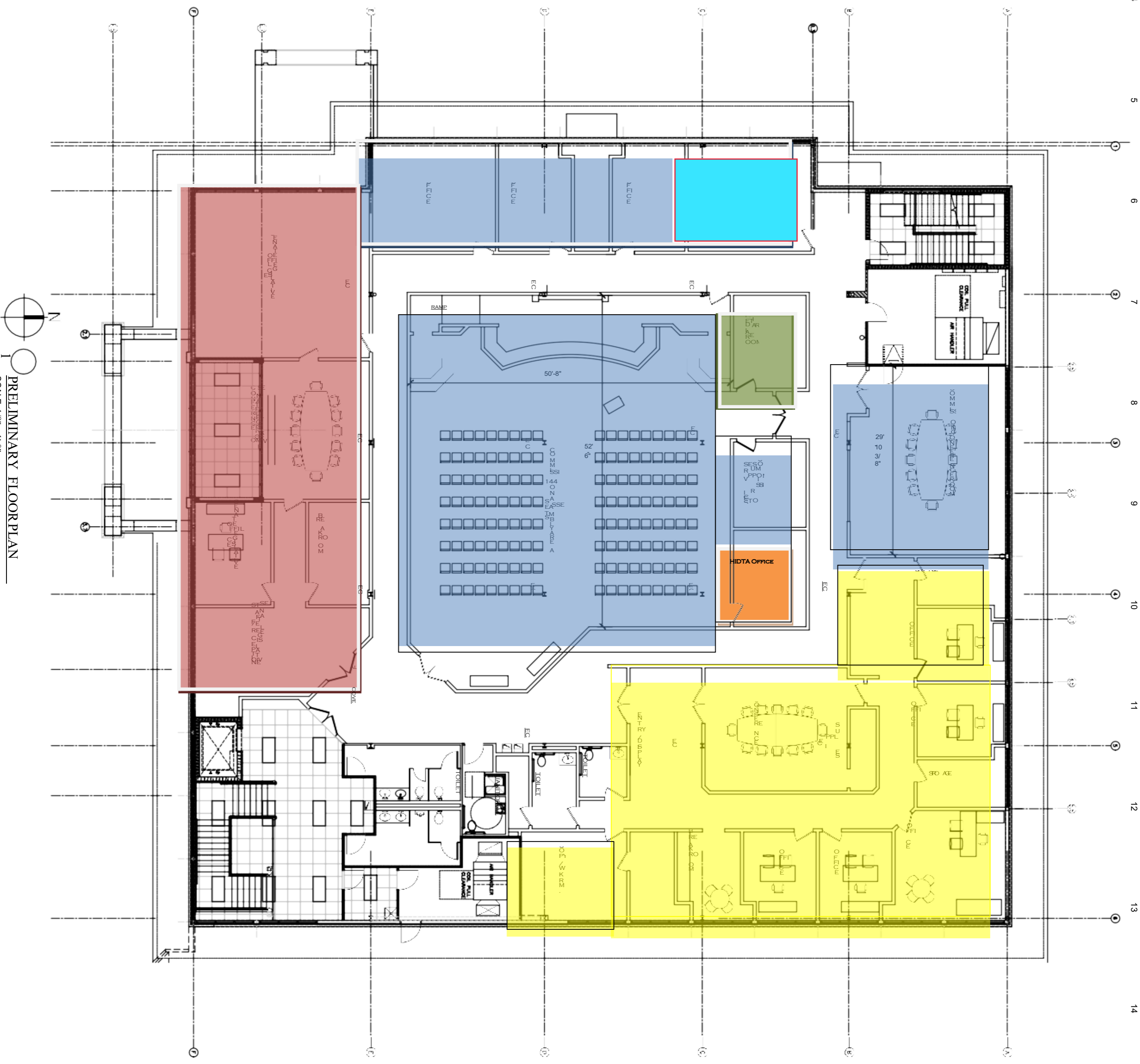


**Commission**  
**Legislative Delegation**  
**Economic Development Alliance**  
 CIS  
 HIDTA Office  
 Judicial

**EXHIBIT B**



PRELIMINARY FLOOR PLAN  
 SCALE: 1/8" = 1'-0"



Interior Build-Out of an Existing Space  
**BALDWIN COUNTY COMMISSION**  
 Second Floor Satellite Courthouse  
 Fairhope, Alabama

NO.	DATE	DESCRIPTION
1.	4-26-19	FOR REVIEW
2.	5-3-19	UPDATED PLAN
3.	7-12-19	For Commission Final Review

**ADAMS STEWART**  
**ARCHITECTS, LLC**  
 Architecture, Planning  
 Interiors, Construction Administration

P.O. Box 529  
 22415 Highway 59 North  
 Robertsdale, Alabama 36567  
 Office: 251.947.3864  
 Fax: 251.947.3138

PROJECT NO: 19-017  
 DRAWN BY: TFS  
 SHEET NO:  
 preliminary floor plan  
**A1.0**