

### Legend

#### HIGHWAY DEPARTMENT LAYERS

Surface Type

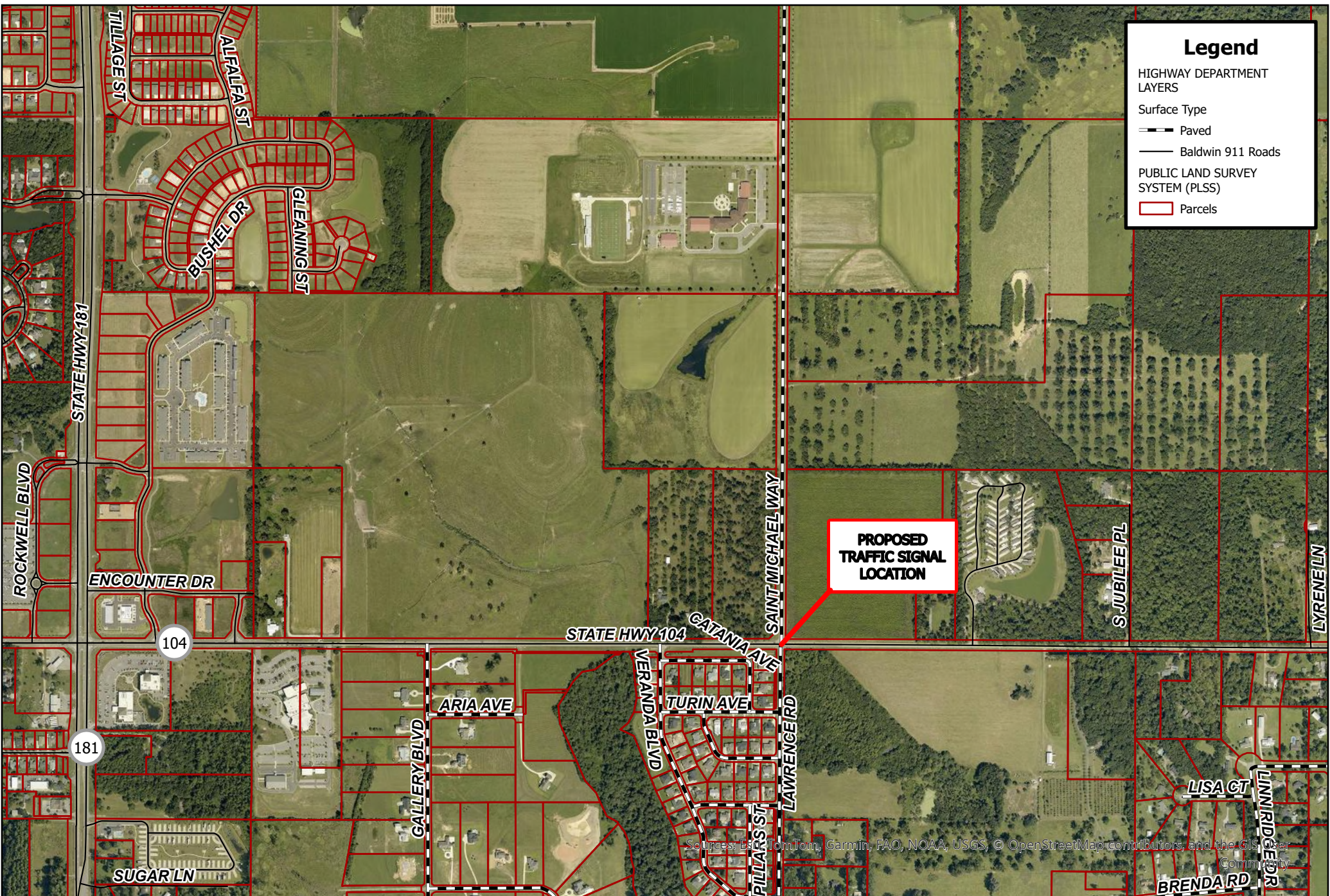
— Paved

— Baldwin 911 Roads

#### PUBLIC LAND SURVEY SYSTEM (PLSS)

▭ Parcels

**PROPOSED  
TRAFFIC SIGNAL  
LOCATION**



Sources: Esri, TomTom, Garmin, FAO, NOAA, USGS, © OpenStreetMap contributors, and the GIS user Community



## Location of Proposed Traffic Signal State Highway 104 and Saint Michael Way

