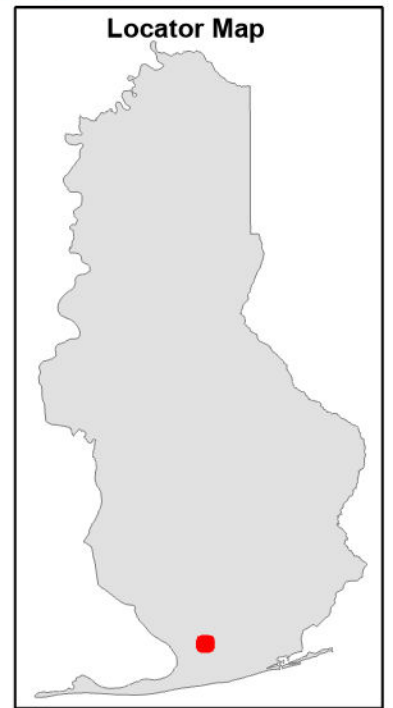
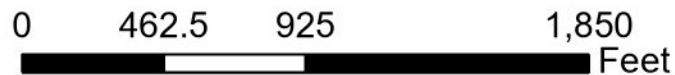


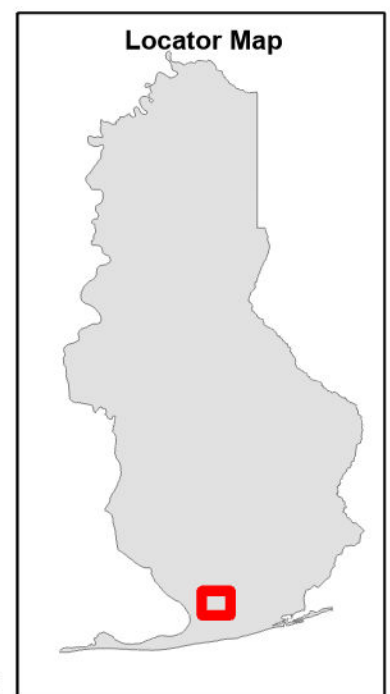
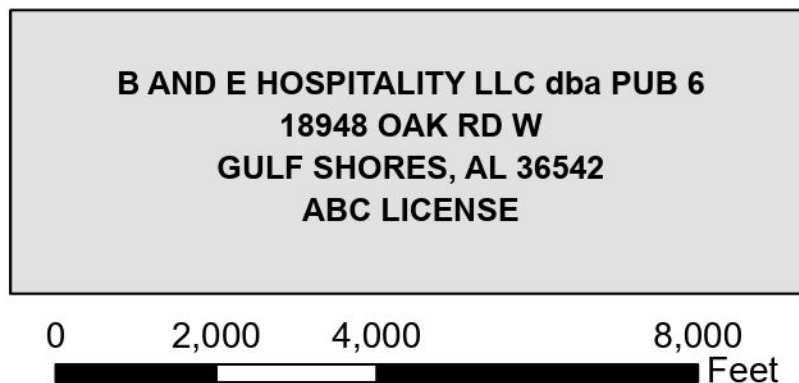
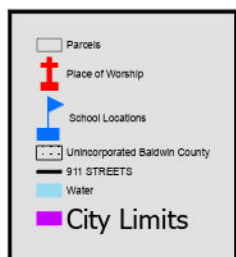
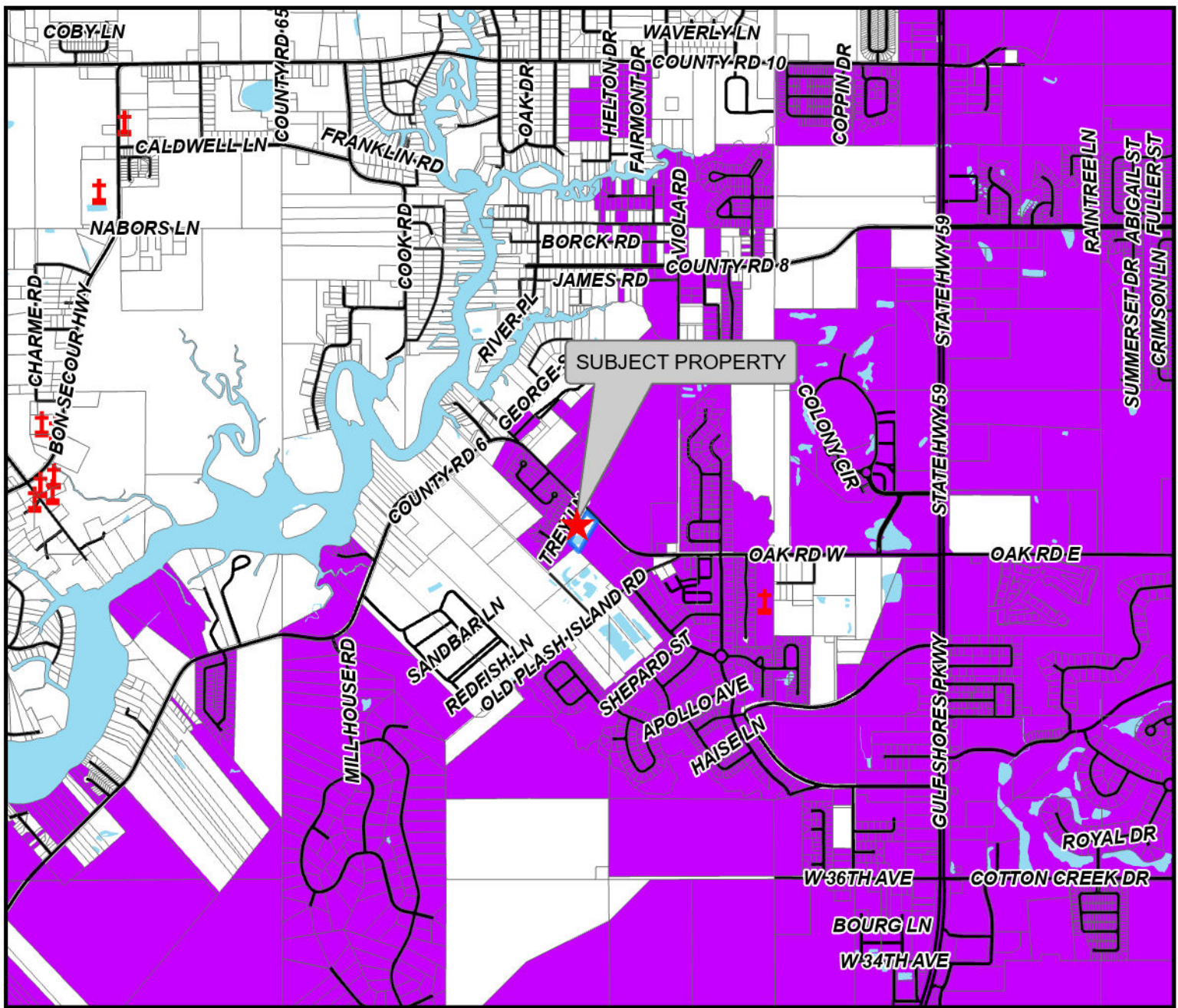


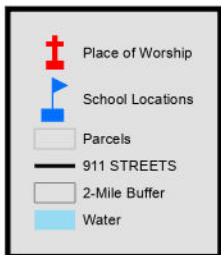
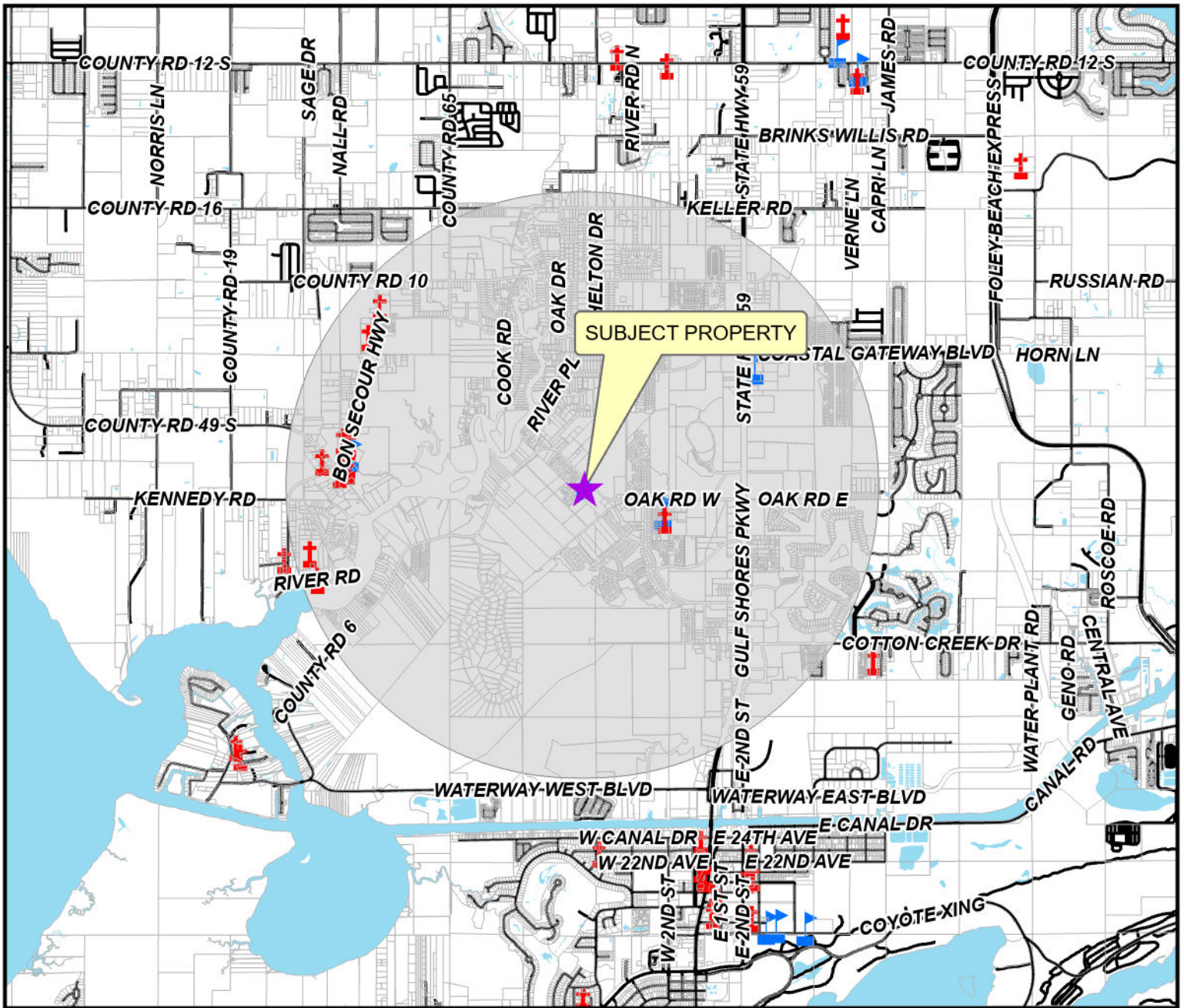
- Place of Worship
- School Locations
- 911 STREETS
- Parcels
- ALBALD23-SID-3INCH.sid
- Red: Band_1
- Green: Band_2
- Blue: Band_3
- ALBALD22-SID-6INCH.sid

B AND E HOSPITALITY LLC dba PUB 6
18948 OAK RD W
GULF SHORES, AL 36542
ABC LICENSE

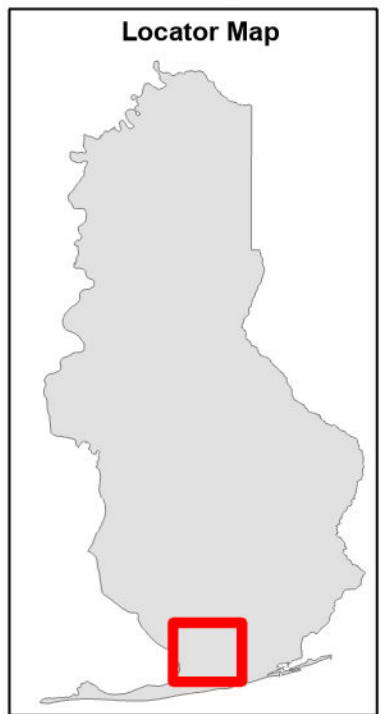
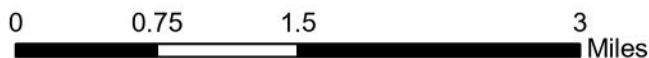


The information contained in this representation of digital data distributed by the Baldwin County Commission's Planning and Zoning Department is derived from a variety of public and private sources and is considered to be dependable. However, the accuracy, completeness, and currency thereof are not guaranteed. The Baldwin County Commission makes no warranties, expressed or implied, as to the accuracy, completeness, currency, reliability, or suitability of information or data contained in or generated from the County Geographic Database for any particular purpose. Additionally, the Baldwin County Commission or any agent, servant, or employee thereof assume no liability associated with the use of this data, and assume no responsibility to maintain it in any matter or form. For more information concerning this map call 251.580.1655.

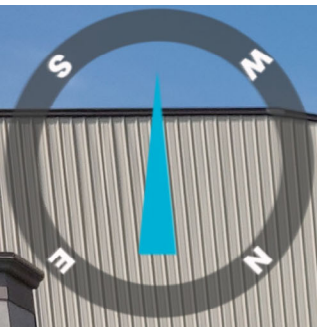




B AND E HOSPITALITY LLC dba PUB 6
18948 OAK RD W
GULF SHORES, AL 36542
ABC LICENSE



The information contained in this representation of digital data distributed by the Baldwin County Commission's Planning and Zoning Department is derived from a variety of public and private sources and is considered to be dependable. However, the accuracy, completeness, and currency thereof are not guaranteed. The Baldwin County Commission makes no warranties, expressed or implied, as to the accuracy, completeness, currency, reliability, or suitability of information or data contained in or generated from the County Geographic Database for any particular purpose. Additionally, the Baldwin County Commission or any agent, servant, or employee thereof assume no liability associated with the use of this data, and assume no responsibility to maintain it in any matter or form. For more information concerning this map call 251.580.1655.



Grow Up Later.

**ALCOHOL BEVERAGE
LICENSE APPLIED FOR
Case Number**

LV-25005

*For Information Contact
Baldwin County Commission
Administration Department
(251) 937-0264*

Jul 29, 2025 9:49:03 AM
30°18'48.65094"N 87°42'4.09036"W
226° SW
Baldwin County Code Enforcement