

Commission

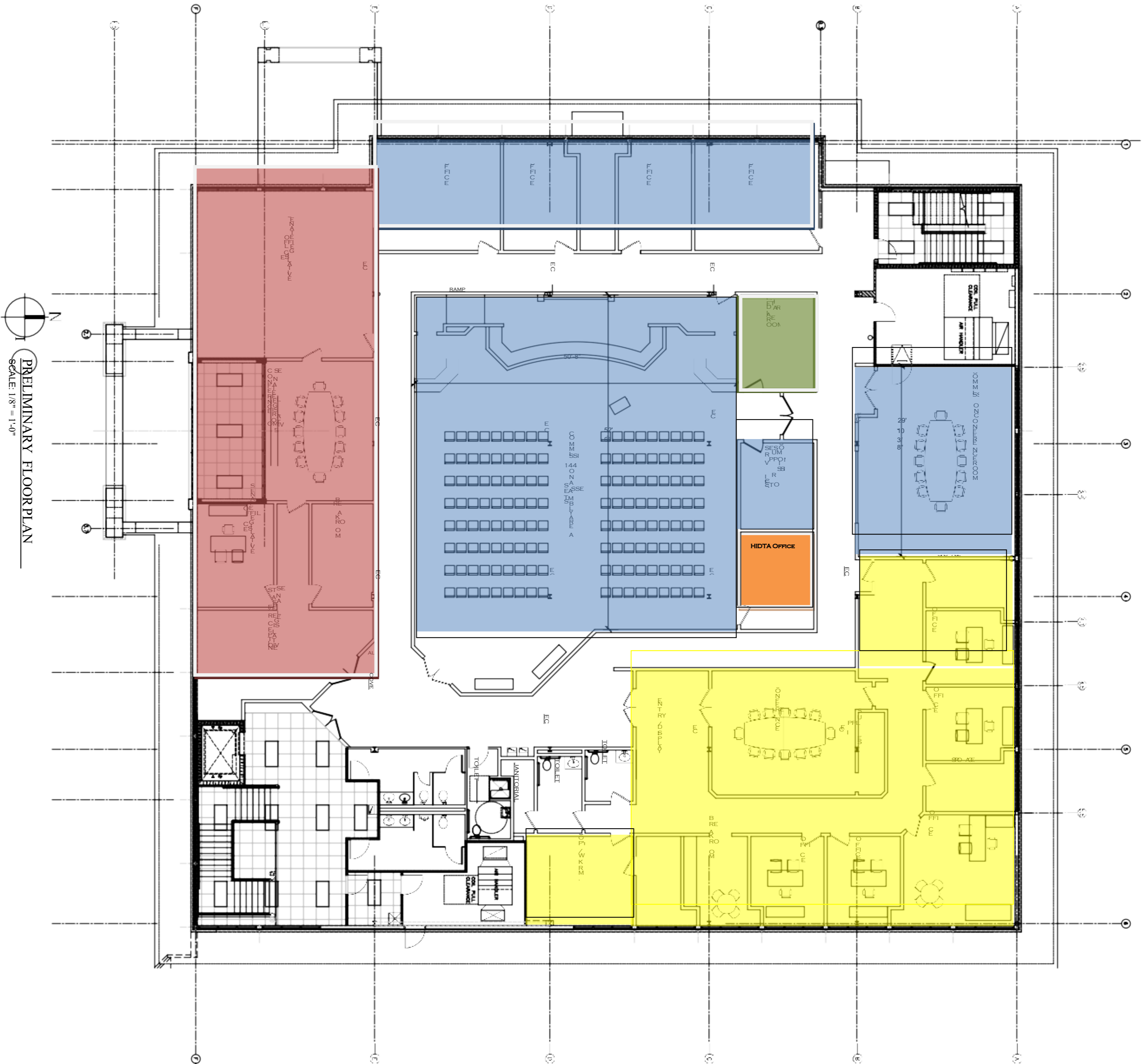
Legislative Delegation

Economic Development Alliance

CIS

HIDTA Office

EXHIBIT B



PRELIMINARY FLOOR PLAN
SCALE: 1/8" = 1'-0"

Interior Build-Out of an Existing Space
BALDWIN COUNTY COMMISSION
Second Floor Satellite Courthouse
Fairhope, Alabama



ISSUE DATE	DESCRIPTION
1. 4-26-19	FOR REVIEW
2. 5-3-19	UPDATED PLAN
3. 7-12-19	For Commission Final Review

ADAMS STEWART
ARCHITECTS, LLC
Architecture, Planning
Interiors, Construction Administration

P.O. Box 529
22615 Highway 59 North
Robertsdale, Alabama 36567
Office: 251.947.3864
Fax: 251.947.3138

A1.0

PROJECT NO. 19-017
DRAWN BY: AMB
CHECKED BY: TTS
SHEET NO.:
Preliminary floor plan