

STATE OF ALABAMA )

COUNTY OF BALDWIN )

**RESOLUTION # 2012-084  
OF THE  
BALDWIN COUNTY COMMISSION**

**EXERCISING THE AUTHORITY PROVIDED IN §11-3-11 (a) (1) OF THE CODE OF ALABAMA 1975, AND SECTION 6 OF ACT NO. 239 (1931), AS AMENDED, TO DIRECT, CONTROL AND MAINTAIN THE PROPERTY OF THE COUNTY, SPECIFICALLY PROPERTY KNOWN AS THE BALDWIN COUNTY EMERGENCY OPERATIONS CENTER.**

WHEREAS, §11-3-11 (a) (1) of the Code of Alabama 1975 provides, in pertinent part, that the Baldwin County Commission shall have authority to direct, control, and maintain the property of the county as it may deem expedient according to law, and in this direction and control it has the sole power to locate the courts in the rooms of the courthouse and to designate the rooms to be occupied by the officers entitled to rooms therein, including the circuit judge if resident in the county, and to change the location of the courts and the designation of the rooms for officers as it may deem best and most expedient, and this shall be done by order of the county commission entered upon the minutes of the county commission at a regular meeting of the county commission. In the event the courthouse is inadequate to supply office rooms for such officers, the county commission may lease such office rooms in a convenient location in the county site and pay the rental from the county fund; and

WHEREAS, further, Section 6 of Act No. 239 (1931), as amended, provides, in pertinent part, that the Baldwin County Commission shall have the duty, power, jurisdiction, authority and privilege to direct and control the property of Baldwin County, as it may deem expedient according to law, and in this direction and control it has the sole power to locate the courts in the rooms of the courthouse and to designate the rooms to be occupied by the different officers entitled to rooms therein, and to change the location of courts and designation of rooms for officers as it may deem best and most expedient; and this shall be done by order of the Commission entered upon its minutes at a regular term of the Commission.

COMES NOW, this honorable county governing body desiring, by this instrument, to provide updated office space assignments at the Baldwin County Emergency Operations Center located at 23100 McAuliffe Drive in Robertsdaile, Alabama, as set forth hereinbelow; now therefore

BE IT RESOLVED AND ORDERED BY THE BALDWIN COUNTY COMMISSION, IN REGULAR SESSION ASSEMBLED, That, pursuant to the authority granted the Baldwin County Commission at §11-3-11 (a) (1) of the Code of Alabama 1975 and Section 6 of Act No. 239 (1931), as amended, as referenced herein and without limitation, the Baldwin County

Commission hereby, and by this instrument, designates the office space assignments at the **Baldwin County Emergency Operations Center** located at 23100 McAuliffe Drive in Robertsedale, Alabama, as follows:

**First Floor**

See Exhibit A hereto

**Second Floor**

See Exhibit B hereto

FURTHER, BE IT RESOLVED AND ORDERED, that this instrument, codified as *Resolution #2012-084 of the Baldwin County Commission*, be entered and spread upon the minutes of this August 7, 2012, regular meeting (term) of the Baldwin County Commission.

DONE, under the Seal of the County of Baldwin, at the County Seat in Bay Minette, Alabama, on this the 7<sup>th</sup> day of August, 2012.

  
Commissioner Robert E. James, Chairman

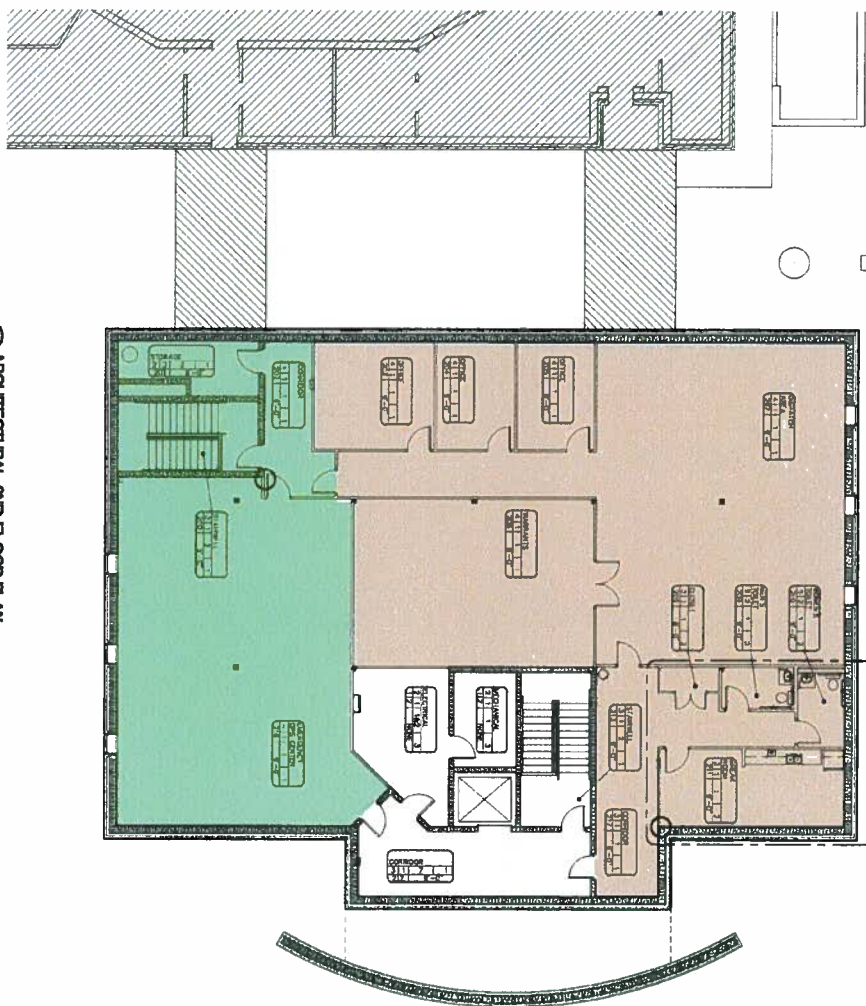
ATTEST

  
David A. Z. Brewer, County Administrator





LS# 2012-084



ARCHITECTURAL 2ND FLOOR PLAN

**Emergency Management Agency**  
**Sheriff's Office**

ROOM FINISH	
TARGET	
ROOM NAME	
FLOOR	BASE WALL CEILING
ROOM NO.	CEILING HEIGHT

[illegible]

## A2.1

**EMERGENCY OPERATIONS  
CENTER BUILDING ADDITION  
ROBERTSDALE, AL**

SHEET DESCRIPTION ARCH. 2ND FLOOR PLAN

**Gatlin  
Hudson  
Architects**  
ARCHITECTS  
LAND PLANNERS  
DESIGNERS  
P.O. BOX 1118  
SOUTH PLACER, ALABAMA 36866  
(205) 886-0814  
(770) 826-7221

PRODUCT NO.  
0428  
DATE  
06 NOV 2006



NO.	DATE	APPL.	REVISION

© 2003 GATLIN HUDSON ARCHITECTS, INC.  
DAPHNE, ALABAMA