

Legend

HIGHWAY DEPARTMENT LAYERS

Surface Type

— Paved

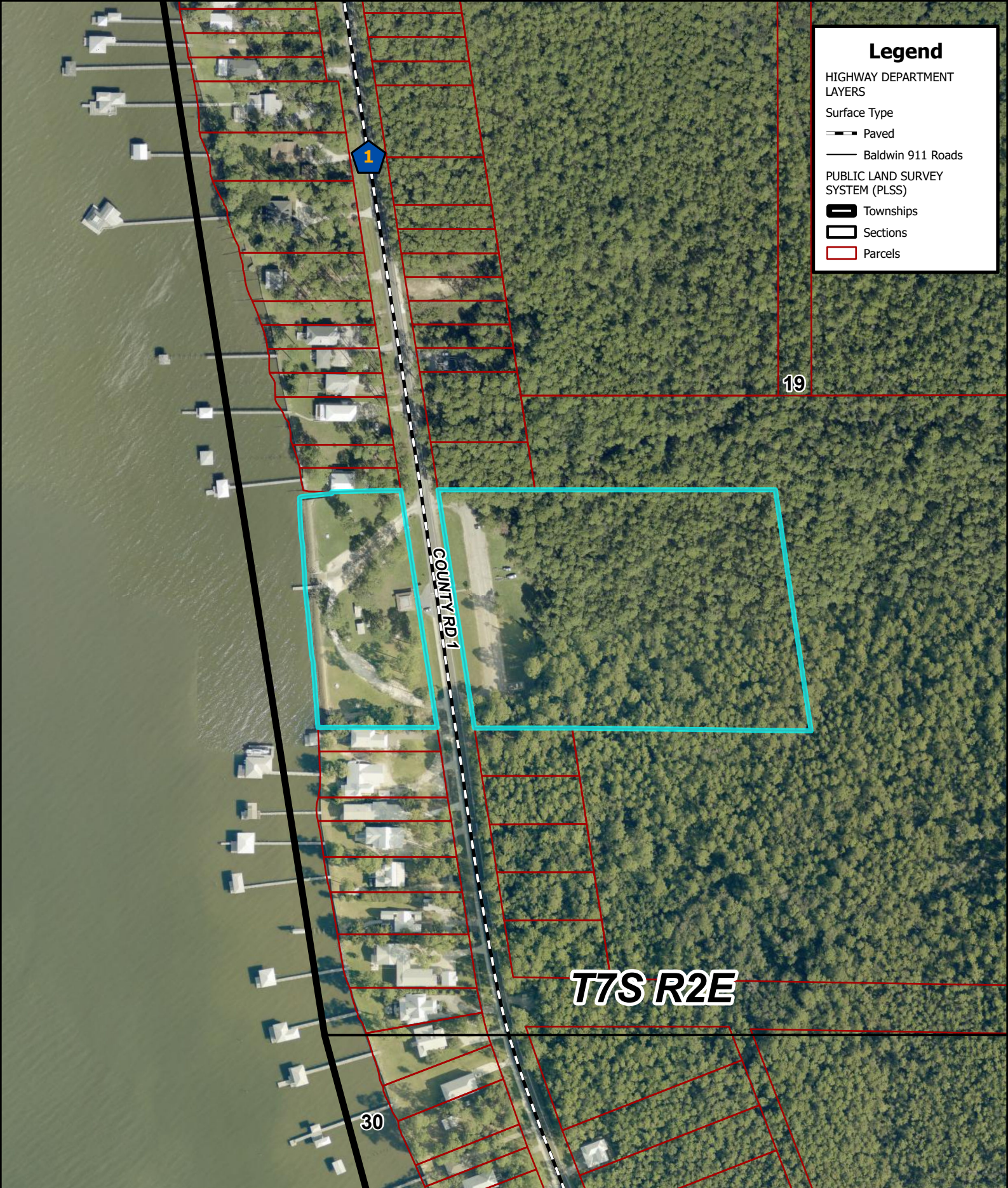
— Baldwin 911 Roads

PUBLIC LAND SURVEY SYSTEM (PLSS)

— Townships

— Sections

— Parcels



Baldwin County Highway Department Mullet Point Park Improvements



Date: 3/11/2026

