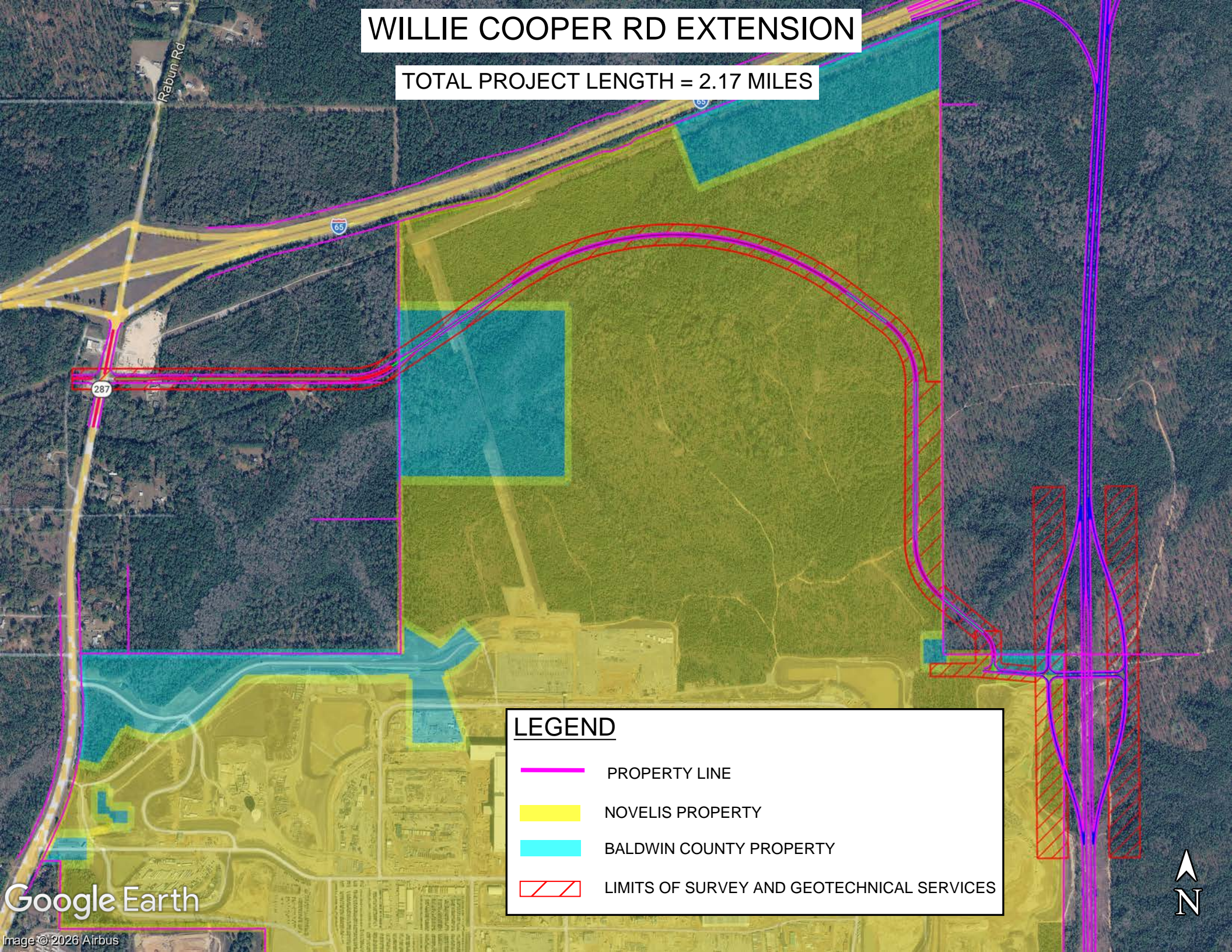






WILLIE COOPER RD EXTENSION

TOTAL PROJECT LENGTH = 2.17 MILES



LEGEND

-  PROPERTY LINE
-  NOVELIS PROPERTY
-  BALDWIN COUNTY PROPERTY
-  LIMITS OF SURVEY AND GEOTECHNICAL SERVICES

