



## Engineering Fee Proposal

Volkert Project Number: TBD

Project Description: Willie Cooper Road Extension – Design

Project Location: Baldwin County

Owner / Client: Baldwin County

Date of Issue: May 22, 2026



Volkert Inc,  
1110 Montlimar Dr. Suite 1050  
Mobile, AL 36609

Proposal Prepared BY: Hank Eubanks, P.E.  
Title: Regional Vice President, South AL Engineering

Volkert, Inc. (Volkert) is pleased to provide this proposal to Baldwin County for the proposed design of Willie Cooper Road Extension, in Bay Minette, Alabama.

The scope of work is presented in the following elements:

- A. Project Description
- B. Scope of Services
- C. Additional Services
- D. Project Understanding, Assumptions, and Exclusions
- E. Time of Performance
- F. Client’s Responsibilities
- G. Deliverables and Design Schedule
- H. Compensation

Attachment A – Man-day Fee Proposal

## A. Project Description – Willie Cooper Road Extension

The Willie Cooper Road Extension project consists of the design of approximately 2.17 miles of new four lane divided and two-lane roadway segments in Baldwin County, Alabama, including a proposed 2,100-foot bridge structure and a signalized intersection at State Route 287 and Willie Cooper Road. The proposed corridor is intended to improve local connectivity, enhance traffic operations, and support continued commercial, and industrial growth within the project area. The project will provide an important east–west transportation connection to the Baldwin Beach Expressway and improving access between the developing areas of the Bay Minette area.

The project will include the complete design of the new roadway corridor in accordance with current American Association of State Highway and Transportation Officials and Alabama Department of Transportation standards and criteria. Major project components will include roadway alignment and geometrics, grading, drainage infrastructure, base and paving design, bridge engineering, traffic signal analysis and design, signing and pavement markings, utility coordination, and environmental measures and permitting.

The signalized intersection at SR 287 will be designed to improve operational efficiency along the roadway segment up to Interstate 65, while maintaining appropriate traffic capacity for projected future conditions.

Engineering services associated with this project will include all necessary surveying, environmental coordination, permitting support, utility coordination, traffic engineering evaluations, and preparation of complete Plans, Specifications, and Estimates (PS&E) documents necessary for construction bidding and implementation. (See Figure 1.)

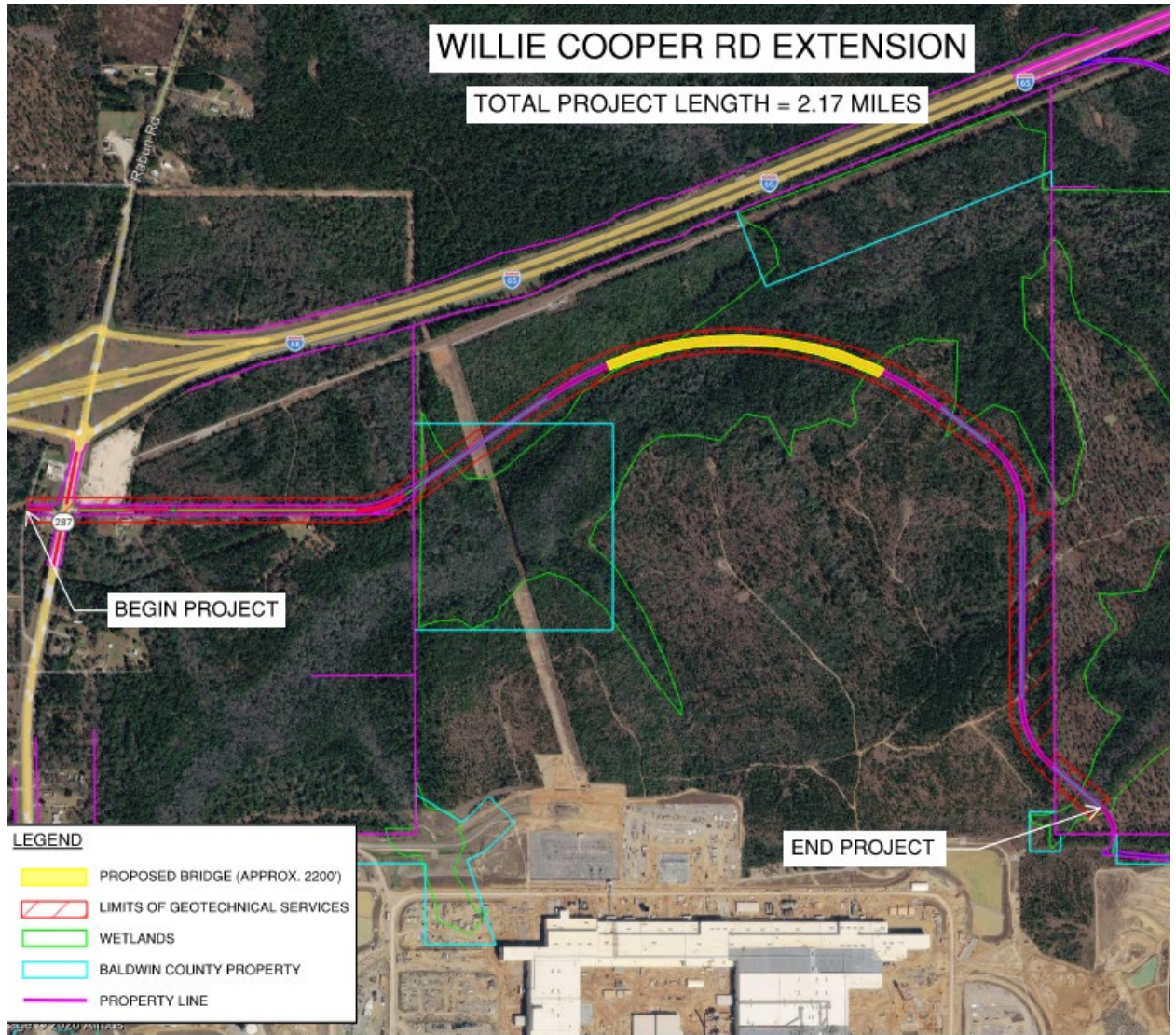


FIGURE 1 (PROPOSED ROADWAY PROJECT)

**B. Scope of Services**

Volkert proposes the following Scope of Services related to the above-noted project:

## Environmental Permitting

Volkert will provide:

### **WETLAND DELINEATION SERVICES**

Volkert will perform a jurisdictional wetland delineation within the project limits. The delineation will be conducted in accordance with the U.S. Army Corps of Engineers (USACE) 1987 Wetland Delineation Manual and the applicable 2010 Regional Supplement.

A comprehensive delineation report will be prepared following USACE guidance to document field observations, data collection, and findings. Please note that all delineated wetland boundaries are considered preliminary until reviewed and verified by the USACE.

The scope of work is as follows:

- Review of published soil survey data and mapping resources
- Review of available aerial photography
- Field evaluation to determine the presence of wetland hydrology indicators
- determine if of hydrophytic indicators are present
- Identification of hydric soil characteristics
- Mapping of jurisdictional areas using a handheld GPS unit
- Flagging of wetland boundaries in the field for identification and survey

### **Exclusions**

Agency permitting fees and compensatory mitigation costs, if required, are not included.

### **THREATENED AND ENGANGERED SPECIES HABITAT ASSESSMENT**

Volkert will conduct a threatened and endangered species habitat assessment and prepare a report of findings for the proposed extension of Willie Cooper Road Extension in Bay Minette, Alabama. The assessment will be performed in accordance with U.S. Fish and Wildlife Service (USFWS) guidelines and applicable regulatory requirements.

The scope of work is as follows:

- Obtain a site-specific U.S. Fish and Wildlife Species USFWS species list using the Information for Planning and Consultation (IPaC) system
- Review published soil survey data and mapping resources
- Review available aerial photography and USGS quadrangle maps
- Conduct a field reconnaissance to evaluate suitable habitat for federally listed species
- Document findings and prepare a report of findings summarizing potential species presence and habitat conditions

PHASE I CULTURAL RESOURCES ASSESSMENT (CRA) – Volkert subconsultant will conduct a Phase I Cultural Resources Assessment to identify any prehistoric or historic resources within the project’s Area of Potential Effect (APE) and evaluate their potential eligibility for the National Register of Historic Places (NRHP). Work will follow Section 106, Appendix C of 33 CFR 325, and Alabama Historical Commission (AHC) standards, under the supervision of an RPA-certified archaeologist meeting the Secretary of the Interior’s Qualification Standards.

The field survey will document all cultural resources within the APE, determine their type, condition, and extent, and assess their potential NRHP significance. Standard archaeological methods, including shovel testing or ground-surface inspection where appropriate will be used.

USACE SECTION 404/ADEM SECTION 401 PERMITTING – Volkert will complete all tasks necessary to support acquisition of a USACE Section 404 Permit and ADEM Section 401 Water Quality Certification for the project. Work will include:

- Request and attend an ADEM Pre-File Meeting.
- Prepare the joint Section 404/401 permit application, including all required attachments, drawings, and supporting documentation.
- Prepare an Alternatives Analysis consistent with regulatory requirements.
- Attend one on-site field review with USACE/ADEM.
- Prepare responses to comments received during the Public Notice period.
- Submit a request for ADEM 401 Water Quality Certification.
- Provide responses to any USACE Requests for Additional Information (RAIs)

**Exclusions**

Agency permitting fees and compensatory mitigation costs, if required, are not included.  
Additional site visits or agency meetings beyond those identified in the scope.  
Preparation of permit modifications or revisions following permit issuance.

## Traffic Engineering

Volkert will provide Traffic Engineering services to perform traffic analysis, traffic signal warrant evaluations, and traffic signal design for the intersection of the proposed Willie Cooper Road Extension at State Route 287. Services will also include traffic signal warrant evaluations for up to one (1) additional intersection located at the Interstate 65 (I-65) interchange.

### Scope of Services

#### *Traffic Data Collection and Analysis*

- Collect and review available traffic data, including ADT and turning movement counts
- Develop Design Hour Volumes (DHV) as necessary
- Perform intersection capacity analysis using Synchro
- Perform segment capacity analysis using HCS
- Evaluate Level of Service (LOS) under existing and projected build conditions (opening and design)
- Development of land use and square footage projections for the overall master plan (each side of SR 287) to be utilized for trip generation (AM, PM, and ADT) calculations for build conditions (opening and design)
- Development of trip distribution and trip assignment (AM, PM, and ADT) for the calculated trips for build conditions (opening and design)

*Signal Warrants* - Conduct traffic signal warrant evaluations in accordance with the Manual on Uniform Traffic Control Devices (MUTCD). Perform additional signal warrant evaluations for up to one (1) intersection at the I-65 interchange.

Prepare documentation to include: methodology technical memorandum outlining input assumptions and values for review and approval by the client and technical reporting documentation summarizing warrant analyses and recommendations.

- Traffic signal warrants
  - EC signal warrant – two (2) intersections
  - NBC (opening and design) signal warrant - two (2) intersections
  - BUC (opening and design) signal warrant - three (3) intersections
- Turn lane warrants (right + left) – DHV
  - EC turn lane warrants – 2 intersections
  - NBC (opening and design) turn lane warrants - 2 intersections
  - BUC (opening and design) turn lane warrants – 2 intersections

#### *Analysis*

- Synchro intersections
  - EC – build model
    - Reporting for AM and PM peak hour
  - NBC (opening and design) – build model
    - Reporting for AM and PM peak hour
  - BUC (opening and design) – build model
    - Reporting for AM and PM peak hour
- HCS Segments
  - EC
    - Reporting for AM and PM peak hour & DHV
  - NBC (opening and design)
    - Reporting for AM and PM peak hour & DHV
  - BUC (opening and design)
    - Reporting for AM and PM peak hour & DHV
- HCS Ramps
  - EC
    - Reporting for AM and PM peak hour & DHV
  - NBC (opening and design)
    - Reporting for AM and PM peak hour & DHV
  - BUC (opening and design)
    - Reporting for AM and PM peak hour & DHV

*Reporting*

- Methodology technical memorandum
  - Develop figures for methodology technical memorandum
  - Develop tables for methodology technical memorandum
  - Complete write up for methodology technical memorandum
- Draft report
  - Develop figures for draft report
  - Develop tables for draft report
  - Complete write up for draft report
  - Complete appendices for draft report
- Final report
  - Address comments
  - Develop final report

***Traffic Signal Design***

---

*Develop Traffic Signal Design Plans for 60% (PIH) plan set submittal*

- Signal index sheet
- Signal project notes sheet
- Signal legend and abbreviations sheet
- Develop signal layout sheets for one (1) intersection
- Develop signal detail sheets for one (1) intersection
- Develop phasing detail sheets for one (1) intersection
- Develop special details sheets for one (1) intersection

*Develop Traffic Signal Design Plans for 85% (PS&E) plan set submittal*

- Signal index sheet
- Signal project notes sheet
- Signal legend and abbreviations sheet
- Develop signal layout sheets for one (1) intersections
- Develop signal detail sheets for one (1) intersections
- Develop phasing detail sheets for one (1) intersections
- Develop special details sheets for one (1) intersections

*Develop Traffic Signal Design Plans for construction/final plan set submittal*

- Signal index sheet
- Signal project notes sheet
- Signal legend and abbreviations sheet
- Develop signal layout sheets for two (2) intersections
- Develop signal detail sheets for one (1) intersections
- Develop phasing detail sheets for one (1) intersections
- Develop special details sheets for one (1) intersections
- Sign and seal signal sheets

**Exclusions**

Intelligent Transportation Systems (ITS) design beyond basic signal interconnect.

Traffic signal design for intersections beyond the Willie Cooper Road Extension at SR 287 (including any additional intersections identified during the analysis or at the I-65 interchange)

Field implementation and/or field tuning of signal timings at Willie Cooper Road Extension at SR 287

## Bridge Design and Details

Volkert will provide comprehensive bridge design services for the proposed Willie Cooper Road Extension bridge, in accordance with the Alabama Department of Transportation (ALDOT) Standards and the latest edition of the ALDOT Structural Design Manual. The bridge design effort will deliver complete superstructure, substructure, and foundation plans and details suitable for bidding and construction. All bridge design documents will be incorporated into the roadway construction plan set and submitted at the 90% and 100% design milestones.

As part of preliminary engineering, Volkert will prepare a preliminary bridge layout (TS&L) identifying the recommended bridge type, span arrangement, and overall bridge length for the Willie Cooper Road Extension structure. The anticipated configuration includes an approximate 28-foot bridge width consisting of two 12-foot lanes and two 2-foot shoulders, situated on a curve horizontal alignment. Foundations are expected to consist of precast concrete and/or steel piling. Final bridge length, span distribution, and structural parameters will be determined during the preliminary design phase based on geotechnical recommendations, roadway geometry, and current ALDOT design criteria.

## Roadway Design Services

### Project Design Kickoff

Upon receipt of the Notice to Proceed, Volkert will coordinate with the owner, stakeholders, and subconsultants to schedule and conduct a project kickoff meeting. The project manager will prepare the agenda, lead the meeting, and confirm project goals, schedule, deliverables, and communication protocols.

### Topographic Survey

Upon issuance of the NTP, Volkert will complete the additional topographic survey required to design the proposed Willie Cooper Road Extension and required roadway improvements to State Route 287 and connecting intersections.

### Roadway Design and Modeling

Volkert will provide full roadway design and modeling services for the Willie Cooper Road Extension and State route 287 improvements. The roadway redesigns will provide a four-lane

divide roadway segment with a raised median and transition to a two-lane roadway section from SR-287 to the Novelis access road connected the proposed Baldwin Beach Expressway II Interchange.

All work will adhere to current ALDOT design criteria, ALDOT Standard Drawings and applicable AASHTO guidelines. The final roadway design and 3D modeling will produce a coordinated, constructible plan set incorporating all required geometric, drainage, utility, and traffic design components through the 100% design milestone.

### **Geotechnical Services**

Volkert will coordinate with Geotechnical Engineering Testing, Inc. to perform geotechnical exploration and soil borings required for the project. Terracon will prepare an required Materials Report, along with applicable Bridge and Culvert Foundation reports.

Soil borings will be required to support bridge and roadway designs, pavement structure evaluations, and roadway fill-slope analyses associated with the proposed roadway, bridge and roadway improvements on State Route 287. Volkert will incorporate all recommendations from the geotechnical reports into the roadway design and structural bridge design.

### **Construction Plan Development**

Volkert will develop construction plans at the 30%, 60%, 90%, and 100% design levels for submittal to the owner.

1. **30% Submittal:** Roadway design criteria, updated schedule, 30% plan set, full topography, property lines, horizontal alignment, proposed centerline profile, and typical section (without pavement structure).
2. **60% Submittal:** Geometric data, drainage plan, estimated quantities, paving and striping layouts, preliminary traffic control plan, 60% bridge plans, preliminary pavement section, and draft materials report (Terracon).
3. **90% Submittal:** Final geometric data, drainage, quantities, paving/striping, signage, traffic control, erosion control, and bridge plans.
4. **100% Plans:** Final sealed construction plan set incorporating all review comments.

### **Contract & Project Specifications Development**

Following completion of the 60% submittal, Volkert will begin development of the construction contract documents using the owner's standard contract template. Technical specifications will be prepared in accordance with current Baldwin County standards. Draft contract documents

and specifications will be submitted with the 90% plan set for owner review. After receiving comments, Volkert will revise and provide the final contract documents and specifications for use during the bidding process.

### **Quality Review (QA/QC)**

Volkert will implement a project-specific Quality Management Plan outlining staffing, schedule, cost controls, and design checklists. Prior to the 90% submittal, the project team will conduct an internal peer review by a qualified professional not involved in the design, along with an internal constructability review performed by an experienced construction engineer. Review comments will be documented and incorporated into subsequent design submittals.

### **Plan Reviews & Project Coordination Administration**

Volkert will coordinate with the owner to schedule and conduct design review meetings at the 30%, 60% (Plan-in-Hand), 90% (PSE), and 100% design stages. Throughout the design phase, Volkert will participate in each review, respond to comments, and provide revisions and supporting information as required to advance the project to final design.

## **B. Additional Services**

Any additional scope presented or requested for this project beyond that listed above will be considered additional services. Additional services may be requested by the Owner and negotiated with the Consultant and/or subconsultant and may be added to an active agreement or through a new agreement.

## **C. Project Understandings, Assumptions, and Exclusions**

Volkert will provide the above-noted services based on the following:

1. Meeting Allowance: Includes up to one public meeting (material preparation and attendance), one project kickoff meeting, one field review, one review meeting per submittal (virtual or in-person), and bi-monthly design status meetings.
2. Additional review cycles beyond the prescribed review period or redesigns due to scope changes, new external constraints, or data errors outside the consultant's control will be handled by amendment.
3. Volkert will study/analyze the following number of scenarios of the Traffic Study area. Any

additional scenarios will be considered additional services.

- Existing Conditions – one (1) – AM & PM peak hour
  - No-Build Future (Future Year) Conditions – one (1) –AM & PM peak hour
  - Build Future (Future Year) Conditions – AM & PM peak hour
4. No temporary traffic signal design is included in this provided fee structure.
  5. Detailed coordinated or time-of-day traffic signal timing development, as well as any implementation, field adjustments, or tuning of signal timings, is not included in this scope or fee structure
  6. The Design Fee does account for additional ITS or communication network design elements or specialized structures unless specifically included.
  7. The Design Fee does not account for Roadway Lighting Design.
  8. The proposed fee includes Volkert providing the Right-of-Way Field Maps, while the County will be responsible for developing tract plats and deeds, preparing appraisals, and performing all right-of-way acquisitions. The proposed fee does not include Right-of-way acquisition services, plats, or legal descriptions and appraisal support.
  9. Value engineering studies or independent technical reviews (ITR) beyond standard QA/QC is not included in the proposed fee.
  10. The proposed fee also does not include ADEM Stormwater permitting or U.S. Army Corps of Engineers (USACE) permitting unless these services are specifically identified as included in the scope.
  11. Construction plans and specifications will be developed based on a single coordinated design; however, the proposed construction plans may be phased into two (2) separate plan sets:  
Each plan set will be prepared as an independent construction package suitable for bidding and construction, while maintaining consistency with the overall project design.
  12. Utility relocation design is anticipated to be limited to modifications to existing utilities at intersections and/or crossroads. Designing new utilities is not included in the scope of this project.
  13. This proposal does not include scope or cost related to Construction Administration (CA). CA services may be provided upon request of the owner and negotiation of scope and fee agreed upon by the owner and Volkert.
  14. The proposal does not include scope or cost related to Construction Engineering & Inspection (CE&I). CE&I services may be provided upon request of the owner and negotiation of scope and fee agreed upon by the owner and Volkert.

15. This proposal does not include construction material testing (CMT) services. CMT services may be provided at the request of the owner and negotiation of scope and fee agreed upon by the owner and Volkert.
16. Volkert’s scope of services will cease upon the issuance of the bid tabulation to the Owner. Any additional services requested by the Owner will require negotiation of the requested scope and fee.
17. Any service or activity not specifically mentioned in this proposal shall be considered excluded and not included in this proposal.

#### **D. Time of Performance**

It is expected for Volkert to be prepared to begin work immediately upon receipt of a notice to proceed. An anticipated design schedule is also provided in this document. Be advised the schedule provided is based on expected durations.

#### **E. Owner Responsibilities**

1. The owner will provide a specific point of contact for Volkert project manager to communicate with through completion of the scope of services provided in this document.
2. Provide Volkert with full access to the project site and all adjoining areas required for field reviews, investigations, and design activities.
3. The owner will provide Volkert with a preferred construction contract template that will be used in the development of the construction contract.

#### **F. Deliverables and Design Schedule**

The following will be produced as the deliverable for this scope:

1. Task A (30% Design Services)
  - a. Topographic Survey
  - b. 30% Construction Plans
  - c. 30% Design Review Meeting
2. Task B (60% Design Services)
  - a. Draft Geotechnical Materials Report
  - b. Draft Drainage Analysis Report
  - c. 60% Construction Plans & Contract Specifications
  - d. 60% Design Review Meeting (ALDOT Plan in Hand Review)
3. Task C (90% Design Services)
  - a. Final Geotechnical Materials Report
  - b. Final Traffic Signal Warrant Analysis

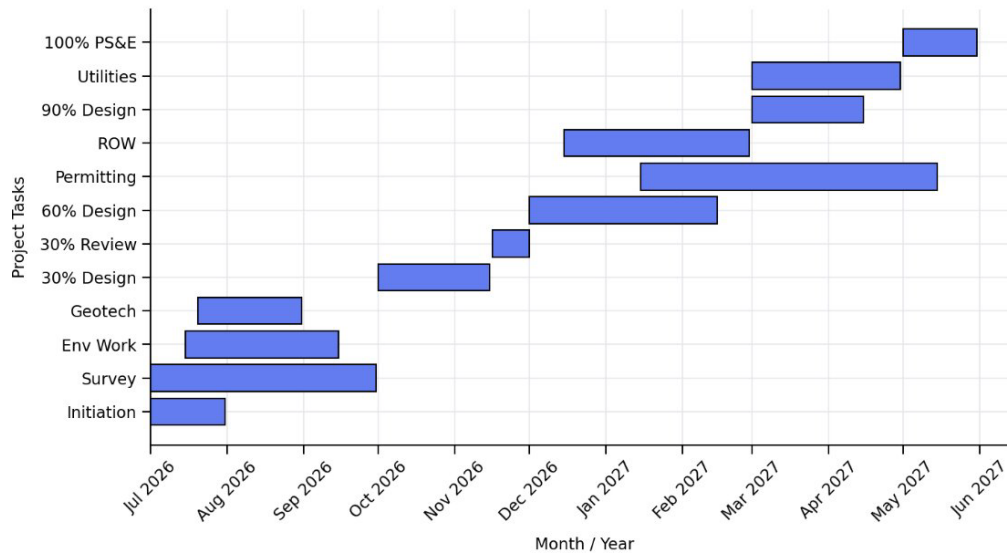
- c. Final Drainage Analysis Report
  - d. 90% Construction Plans & Contract Specifications
  - e. 90% Design Review Meeting (ALDOT PS&E)
4. Task D (100% Design Services)
- a. Issue for Bid Construction Plans & Contract Specifications

**Design Schedule Narrative (12 Months)**

A 12-month design effort will begin upon receipt of Notice to Proceed (NTP), commencing approximately eight weeks after receipt of survey and geotechnical data. Months 1–3 will focus on preparing the 30% design package, including kickoff activities, preliminary geometry and drainage, and initial utility conflict review. Months 4–7 will advance the design to 60% with refined pavement and bridge layouts and updated drainage and geotechnical inputs. Months 8–10 will develop the 90% submittal, completing final geometry, drainage details, signing and striping, erosion control, traffic control phasing, and near-final structures plans, supported by internal QA/QC review. The final 100% PS&E package will be delivered in Months 11–12, including final plans, specifications, bid documents, and a final engineer’s estimate.

*\*Schedule below is based on a NTP of July 1, 2026*

Willie Cooper Rd Extension - Design Schedule (Through PS&E)



*\* The following items have the potential to impact the project schedule and will require close coordination:*

- Environmental permitting (USACE / ADEM approvals)
- Wetland and stream impacts, including mitigation requirements

- Utility conflicts and coordination with third-party providers
- Geotechnical findings that may influence design requirements

#### H. Compensation

The compensation to be paid to Volkert for providing the services requested is provided in the Fee Summary Table below. A detailed breakdown of services provided with associated cost is included in **Attachment A** to this document.

# Attachment A

**VOLKERT, INC.  
MANPOWER AND FEE PROPOSAL  
FOR**

**BALDWIN COUNTY, ALABAMA**

**WILLIE COOPER RD EXTENSION  
FROM SR287 TO BALDWIN BEACH EXPRESS  
II**

**DESIGN UPDATE**

**ROADWAY PLANS, BRIDGE PLANS, UTILITY  
COORDINATION, ENVIROMENTAL & TRAFFIC  
SIGNAL DESIGN AND ANALYSIS**



## Baldwin County

<b>Project No.</b> TBD			
<b>County</b> Baldwin			
<b>Description</b> Design Update			
<b>Scope of Work</b> Traffic Engineering			
<b>Project Length</b> 2.17 Miles			
<b>Consultant</b> Volkert, Inc.			
<b>Fee Proposal (Traffic Engineering)</b>			
<b>PERSONNEL COST</b>			
Man-days x Daily Rate			
Project Manager (10% of Eng. + Senior Designer)	11.03	\$ 680.00	\$ 7,500.40
Engineer	38.75	\$ 500.00	\$ 19,375.00
Senior Designer	71.50	\$ 420.00	\$ 30,030.00
		\$ -	\$ -
		\$ -	\$ -
<b>Total Direct Labor</b>			\$ 56,905.40
Combined Overhead (%)	140.92		\$ 80,191.09
Out-of-Pocket Expenses**			\$ 1,409.40
<b>Sub-Total</b>			<b>\$ 138,505.89</b>
Operating Margin (15%)			\$ 20,775.88
<b>Sub-Total</b>			<b>\$ 159,281.77</b>
<b>SUB-CONSULTANTS (attach man-day &amp; fee FROM each sub-consultant; show total fee for each here)</b>			
Marr Traffic - 12-hour TMC at Four (4) Intersections			\$ 3,180.00
			\$ -
			\$ -
Subconsultant Administration Expense (10%)			\$ 318.00
<b>Sub-Total</b>			<b>\$ 162,779.77</b>
Facilities Capital Cost of Money (% of Direct Labor)	0.84		\$ 478.01
<b>TOTAL FEE</b>			<b>\$ 163,257.78</b>

**Baldwin County**

**Project No.** TBD  
**County** Baldwin  
**Description** Willie Cooper Road Extension  
**Scope of Work** Traffic Engineering  
**Project Length** 2.17 Miles

**Consultant** Volkert, Inc.

<b>Traffic Engineering</b>		Engineer	Senior Designer
<b>Traffic Engineering Analysis and Design</b>			
<b>Data Collection</b>			
<i>Obtain TDM Data</i>			
Existing Conditions TDM Run & Traffic Volume Output File Eval	1.00	1.50	
No-Build Conditions TDM Run & Traffic Volume Output File Eval	1.00	1.50	
Build Conditions (one) TDM Run & Traffic Volume Output File Eval	1.00	2.00	
<i>Obtain Master Plan Land Use Data</i>			
Review Master Plan Data	0.50	0.50	
Develop Land Use and Square Footage for Opening Year & Design Year (Both sides of SR 287)	1.50	2.50	
Meet with County to Determine Master Plan Land Use and Square Footage	1.00	1.00	
<i>Traffic Count Data Collection</i>			
Collect Current ALDOT ADT Data for Study Area	0.50	1.00	
Process 12-Hour (3) TMCs from Collection	0.50	1.00	
<b>Trip Generation, Distribution, &amp; Assignment</b>			
<i>Trip Generation, Distribution, &amp; Assignment</i>			
Develop Trip Generation for Full Area of Master Plan - Daily, AM, & PM - Cars & Trucks)	1.25	2.25	
Develop Trip Distribution for Build Alternative (two - Open & Design) - AM & PM - ADT	1.25	2.25	
Develop Trip Assignment for Build Alternative (two - Open & Design) - AM & PM - ADT	1.25	2.25	
Develop DHV Traffic for Segment Analysis	1.00	1.75	
<b>Analysis</b>			
<i>HCS Segment (Directional - DHV)</i>			
Existing Conditions - 8 Segments DHV	0.50	1.25	
No-Build Conditions - 8 Segments DHV	0.50	1.25	
Build Conditions - 12 Segments DHV	1.00	2.50	
<i>Segment Analysis (ADT)</i>			
Existing Conditions - 8 Segments - ADT	0.25	0.75	
No-Build Conditions - 8 Segments - ADT	0.25	0.75	
Build Conditions - 12 Segments - ADT	0.50	1.25	
<i>Ramp Analysis (ADT)</i>			
Existing Conditions - 4 Ramps - ADT	0.25	0.50	
No-Build Conditions Open - 4 Ramps - ADT	0.25	0.25	
No-Build Conditions Design - 4 Ramps - ADT	0.25	0.25	
Build Conditions Open - 4 Ramps - ADT	0.25	0.25	
Build Conditions Design - 4 Ramps - ADT	0.25	0.25	
<i>Ramp Analysis (Merge - DHV)</i>			
Existing Conditions - 4 Merge - DHV	0.25	0.50	
No-Build Conditions Open - 4 Ramps - DHV	0.25	0.25	
No-Build Conditions Design - 4 Ramps - DHV	0.25	0.25	
Build Conditions Open - 4 Ramps - DHV	0.25	0.50	
Build Conditions Design - 4 Ramps - DHV	0.25	0.50	
<i>Ramp Analysis (Diverge - DHV)</i>			
Existing Conditions - 4 Diverge - DHV	0.25	0.50	
No-Build Conditions Open - 4 Ramps - DHV	0.25	0.25	
No-Build Conditions Design - 4 Ramps - DHV	0.25	0.25	
Build Conditions Open - 4 Ramps - DHV	0.25	0.50	
Build Conditions Design - 4 Ramps - DHV	0.25	0.50	
<i>Synchro Intersections</i>			
Existing Conditions - Build Model	0.75	1.50	

**Baldwin County**

<b>Traffic Engineering</b>		
	Engineer	Senior Designer
Reporting for AM & PM	0.25	0.25
No-Build Open Conditions - Build Model	0.25	0.75
Reporting for AM & PM	0.25	0.25
No-Build Design Conditions - Build Model	0.25	0.50
Reporting for AM & PM	0.25	0.25
Build Conditions Open - Build Model	0.75	1.50
Reporting for AM & PM	0.25	0.25
Build Conditions Design - Build Model	0.25	0.75
Reporting for AM & PM	0.25	0.25
<b>Warrants</b>		
Traffic Signal Warrants		
Existing Conditions Signal Warrant - 2 Intersection	0.25	0.50
No-Build Conditions Open Signal Warrant - 2 Intersection	0.25	0.50
No-Build Conditions Design Signal Warrant - 2 Intersection	0.25	0.50
Build Conditions Open Signal Warrants - 2 Intersections	0.25	0.50
Build Conditions Design Signal Warrants - 2 Intersections	0.25	0.50
Turn Lane Warrants ( Right + Left) - DHV		
Existing Conditions Turn Lane Warrants - 2 Intersections	0.25	0.50
No-Build Conditions Open Turn Lane Warrants - 2 Intersections	0.25	0.50
No-Build Conditions Design Turn Lane Warrants - 2 Intersections	0.25	0.50
Build Conditions Open Turn Lane Warrants - 2 Intersections	0.25	0.50
Build Conditions Design Turn Lane Warrants - 2 Intersections	0.25	0.50
<b>Reporting</b>		
<i>Methodology Memo</i>		
Develop Figures for Methodology Memo	0.50	1.00
Develop Tables for Methodology Memo	0.50	1.00
Complete Write Up for Methodology Memo	0.75	1.00
<i>Draft Report</i>		
Develop Figures for Draft Report	0.50	1.00
Develop Tables for Draft Report	0.50	1.00
Complete Write Up for Draft Report	3.25	10.00
Complete Appendix for Draft Report	0.50	1.00
<i>Final Report</i>		
Address Comments	0.50	1.00
Develop Final Report	0.25	0.25
<b>Traffic Sign Design (1 Intersection)</b>		
Title Sheet	0.25	0.25
Index Sheet	0.25	0.25
Project Note Sheet	0.50	0.50
Plans Legend & Abbreviations	0.25	0.25
Traffic Signal Layout	0.50	2.00
Traffic Signal Details	0.50	1.75
Traffic Signal Phasing	0.50	1.00
QA/QC (PIH, PS&E, CON/OE)	2.00	1.00
Roadway Coordination	0.75	1.25
Sequence of Construction	0.75	1.25
Site Visit	0.75	0.75
<b>TOTALS</b>	<b>38.75</b>	<b>71.50</b>

**Baldwin County**

<b>Project No.</b>	TBD
<b>County</b>	Baldwin
<b>Description</b>	Design Update
<b>Scope of Work</b>	Traffic Engineering
<b>Project Length</b>	2.17 Miles
<b>Consultant</b>	Volkert, Inc.

**Out-of-pocket Expenses (Environmental)**

**TRAVEL COST**

Mileage Cost	Trips	Miles/Trip	\$/Mile	Total
Trips from Bham to Mobile & Back	2	510	\$0.720	\$ 734.40
	0	0	\$0.000	\$ -
	0	0	\$0.000	\$ -
	0	0	\$0.000	\$ -
<b>Total Mileage Cost</b>				<b>\$ 734.40</b>

Subsistence Cost	Days	# People	\$/Day	Total
Travel allowance (6 hour trips)	0	0	\$0.00	\$ -
Travel allowance (12 hour trips - meal provided by others)	0	0	\$0.00	\$ -
Travel allowance (12 hour trips)	0	0	\$0.00	\$ -
Travel allowance (overnight)***	2	2	\$75.00	\$ 300.00
				\$ -
<b>Total Subsistence Cost</b>				<b>\$ 300.00</b>
<b>Total Travel Cost</b>				<b>\$ 1,034.40</b>

**PRINTING / REPRODUCTION COST**

Type of printing/reproduction	# of Sets	Sheets/Set	Total Sheets	Cost/Sheet	Total
Draft Report	1	250	250	\$ 0.75	\$ 187.50
Final Report	1	250	250	\$ 0.75	\$ 187.50
	0	0	0	\$ -	\$ -
	0	0	0	\$ -	\$ -
	0	0	0	\$ -	\$ -
	0	0	0	\$ -	\$ -
<b>Total Printing/Reproduction Cost</b>					<b>\$ 375.00</b>

<b>Communication Cost (telephone, fax, etc.)</b>	<b>Total</b>
	<b>\$ -</b>

<b>Postage Cost (overnight, stamps, etc.)</b>	<b>Total</b>
	<b>\$ -</b>

<b>Other (provide description on next line)</b>	<b>Total</b>
	<b>\$ -</b>

<b>Total Out-of-pocket Expenses</b>		<b>\$ 1,409.40</b>
-------------------------------------	--	--------------------

**Comments:**

## Baldwin County

<b>Project No.</b>	TBD
<b>County</b>	Baldwin
<b>Description</b>	Willie Cooper Road Extension
<b>Scope of Work</b>	Enviromental
<b>Project Length</b>	2.17 Miles
<b>Consultant</b>	Volkert, Inc.
<b>Fee Proposal (Enviromental)</b>	

<b>PERSONNEL COST</b>			
	Man-days	x Daily Rate	
Project Manager (10% of Enviro Manager + Tech.)	2.68	\$ 640.00	\$ 1,715.20
Environmental Manager	3.75	\$ 586.00	\$ 2,197.50
Technician	23.00	\$ 351.00	\$ 8,073.00
			\$ -
		\$ -	\$ -
<b>Total Direct Labor</b>			\$ 11,985.70
Combined Overhead (%)	140.92		\$ 16,890.25
Out-of-Pocket Expenses**			\$ 16,500.00
<b>Sub-Total</b>			<b>\$ 45,375.95</b>
Operating Margin (15%)			\$ 6,806.39
<b>Sub-Total</b>			<b>\$ 52,182.34</b>
<b>SUB-CONSULTANTS (attach man-day &amp; fee FROM each sub-consultant; show total fee for each here)</b>			
All Phases			\$ 16,500.00
			\$ -
			\$ -
Subconsultant Administration Expense (10%)			\$ 1,650.00
<b>Sub-Total</b>			<b>\$ 70,332.34</b>
Facilities Capital Cost of Money (% of Direct Labor)	0.84		\$ 100.68
<b>TOTAL FEE</b>			<b>\$ 70,433.02</b>

**Baldwin County**

<b>Project No.</b> TBD
<b>County</b> Baldwin
<b>Description</b> Design Update
<b>Scope of Work</b> Environmental
<b>Project Length</b> 2.17 Miles
<b>Consultant</b> Volkert, Inc.

<b>Environmental</b>		
	Environmental Manager	Technician
Wetland Delineation	0.00	8.00
Threatened and Endangred Species Habitat Assessment	0.00	8.00
Attend USACE Pre-App Meeting	0.5	0.5
Request Pre-File Meeting with ADEM	0.00	0.50
Prepare USACE Section 404 IP Application including Alt An	0.25	0.25
Address Public Comment	1.00	5.00
Request ADEM WQC	0.00	0.25
Respond to USACE Request for Additional Information	2.00	0.50
<b>TOTALS</b>	<b>3.75</b>	<b>23.00</b>

**Baldwin County**

<b>Project No.</b>	TBD
<b>County</b>	Baldwin
<b>Description</b>	Design Update
<b>Scope of Work</b>	Enviromental
<b>Project Length</b>	2.17 Miles
<b>Consultant</b>	Volkert, Inc.

**Out-of-pocket Expenses (Environmental)**

**TRAVEL COST**

Mileage Cost	Trips	Miles/Trip	\$/Mile	Total
Trips to Site	0	0	\$0.000	\$ -
	0	0	\$0.000	\$ -
	0	0	\$0.000	\$ -
	0	0	\$0.000	\$ -
<b>Total Mileage Cost</b>				<b>\$ -</b>

Subsistence Cost	Days	# People	\$/Day	Total
Travel allowance (6 hour trips)	0	0	\$0.00	\$ -
Travel allowance (12 hour trips - meal provided by others)	0	0	\$0.00	\$ -
Travel allowance (12 hour trips)	0	0	\$0.00	\$ -
Travel allowance (overnight)**	0	0	\$0.00	\$ -
				\$ -
<b>Total Subsistence Cost</b>				<b>\$ -</b>
<b>Total Travel Cost</b>				<b>\$ -</b>

**PRINTING / REPRODUCTION COST**

Type of printing/reproduction	# of Sets	Sheets/Set	Total Sheets	Cost/Sheet	Total
	0	0	0	\$ -	\$ -
	0	0	0	\$ -	\$ -
	0	0	0	\$ -	\$ -
	0	0	0	\$ -	\$ -
	0	0	0	\$ -	\$ -
	0	0	0	\$ -	\$ -
<b>Total Printing/Reproduction Cost</b>					<b>\$ -</b>

<b>Communication Cost (telephone, fax, etc.)</b>	<b>Total</b>
	<b>\$ -</b>

<b>Postage Cost (overnight, stamps, etc.)</b>	<b>Total</b>
	<b>\$ -</b>

<b>Other (provide description on next line)</b>	<b>Total</b>
All Phases Archaeology	<b>\$ 16,500.00</b>

<b>Total Out-of-pocket Expenses</b>		<b>\$ 16,500.00</b>
-------------------------------------	--	---------------------

**Comments:**

## Baldwin County

<b>Project No.</b>	TBD
<b>County</b>	Baldwin
<b>Description</b>	Willie Cooper Road Extension
<b>Scope of Work</b>	Roadway Plans
<b>Project Length</b>	2.17 Miles
<b>Consultant</b>	Volkert, Inc.
<b>Fee Proposal (Roadway Plans)</b>	

<b>PERSONNEL COST</b>			
	Man-days	x Daily Rate	
Project Manager (10% of Eng.+ Senior Designer)	36.07	\$ 640.00	\$ 23,084.80
Engineer	172.53	\$ 505.00	\$ 87,127.65
Senior Designer	188.18	\$ 383.00	\$ 72,072.94
Clerical	0.00	\$ 268.00	-
<b>Total Direct Labor</b>			<b>\$ 182,285.39</b>
Combined Overhead (%)	140.92		\$ 256,876.57
Out-of-Pocket Expenses**			\$ 182.70
<b>Sub-Total</b>			<b>\$ 439,344.66</b>
Operating Margin (15%)			\$ 65,901.70
<b>Sub-Total</b>			<b>\$ 505,246.36</b>
<b>SUB-CONSULTANTS ( fee from each sub-consultant; show total fee for each here)</b>			
Survey (SR287 & Willie Cooper)			\$ 37,500.00
GeoTech (Roadway Widening and Novelis Plant Entrance Road)			\$ 335,000.00
			\$ -
Subconsultant Administration Expense (10%)			\$ 37,250.00
<b>Sub-Total</b>			<b>\$ 914,996.36</b>
Facilities Capital Cost of Money (% of Direct Labor)	0.84		\$ 1,531.20
<b>TOTAL FEE</b>			<b>\$ 916,527.56</b>

\*\*See Grand Total Fee sheet

**Baldwin County**

<b>Project Number</b>	TBD
<b>County</b>	Baldwin
<b>Description</b>	Design Update
<b>Scope of work</b>	Roadway Plans
<b>Length</b>	2.17 miles
<b>Consultant</b>	Volkert, Inc.

ROADWAY PLANS SHEET TITLE	NO OF SHEETS	ESTIMATED MAN-DAYS			
		ENGINEER		Designer	
		SHEET	TOTAL	SHEET	TOTAL
<b>TITLE SHEET</b>	1.00	5.00	5.00	1.00	1.00
<b>INDEX SHEET (Includes Std. Drawings)</b>	3.00	0.50	1.50	0.50	1.50
<b>PROJECT NOTE SHEET</b>	5.00	1.00	5.00	0.50	2.50
<b>SIGNAL LEGEND AND ABBREVIATIONS</b>	1.00	0.10	0.10	0.10	0.10
<b>LIGHTING LEGEND AND ABBREVIATIONS</b>	1.00	0.10	0.10	0.10	0.10
<b>GEOMETRIC LAYOUT SHEETS</b>	5.00	1.00	5.00	1.50	7.50
<b>PLANS LEGEND</b>	1.00	0.10	0.10	0.10	0.10
<b>TYPICAL SECTIONS</b>					
Main Roadway (Willie Cooper, SR 287)	5.00	1.00	5.00	2.00	10.00
Details	3.00	0.50	1.50	1.00	3.00
	0.00	0.00	0.00	0.00	0.00
<b>SUMMARY SHEET</b>					
Main Summary	2.00	0.50	1.00	1.00	2.00
<b>SUMMARY BOX SHEETS</b>					
Roadway Pipe	1.00	0.50	0.50	0.50	0.50
Box Culvert (New)	0.50	0.50	0.25	0.50	0.25
Guardrail	0.50	0.50	0.25	1.00	0.50
Slope Paving (Under Bridges)	0.50	0.50	0.25	0.50	0.25
Side Drain Pipe	0.50	0.50	0.25	0.50	0.25
Signing	2.00	0.50	1.00	1.00	2.00
Bridge	2.00	0.50	1.00	1.00	2.00
Striping & Pavement Markings	1.00	1.00	1.00	1.00	1.00
Curb & Gutter	0.50	0.25	0.13	0.50	0.25
Bridge End Slabs	0.50	0.50	0.25	0.50	0.25
Roadway Lighting	0.00	0.00	0.00	0.00	0.00
Sidewalk	0.00	0.00	0.00	0.00	0.00
Slope Paving (Ditches)	0.50	0.50	0.25	0.50	0.25
Ditch Summary	0.50	0.10	0.05	0.25	0.13
Concrete Safety Barrier	0.50	0.10	0.05	0.50	0.25
Retaining Wall	1.00	0.50	0.50	1.00	1.00
Misc. Boxes	2.00	1.00	2.00	1.00	2.00
Erosion Control	1.00	0.50	0.50	1.00	1.00
		0.00	0.00	0.00	0.00
			0.00		0.00

Baldwin County

ROADWAY PLANS SHEET TITLE	NO OF SHEETS	ESTIMATED MAN-DAYS			
		ENGINEER		Designer	
		SHEET	TOTAL	SHEET	TOTAL
<b>PLAN &amp; PROFILE (1"=50')</b>					
Main Roadway @ 1500' per sheet	8.00	1.50	12.00	2.00	16.00
SR 287	2.00	1.50	3.00	2.00	4.00
	0.00	0.00	0.00	0.00	0.00
<b>PAVING LAYOUT (1"=50')</b>					
Main Roadway (includes striping)	8.00	0.50	4.00	1.00	8.00
SR 287	2.00	0.25	0.50	1.00	2.00
	0.00	0.00	0.00	0.00	0.00
<b>INTERSECTIONS (SR-287, Novellis Entrance Road)</b>					
Geometrics 1" = 200'	3.00	1.00	3.00	1.00	3.00
Site Grading	2.00	1.00	2.00	1.00	2.00
Signing	3.00	1.00	3.00	1.00	3.00
	0.00	0.00	0.00	0.00	0.00
<b>TRAFFIC CONTROL (1"=100')</b>					
Sequence of Construction	1.00	0.50	0.50	0.25	0.25
TCP Quantities	1.00	0.50	0.50	0.50	0.50
TCP Phase Layouts Sheets	8.00	1.25	10.00	2.00	16.00
Special Drawings	3.00	0.25	0.75	0.25	0.75
	0.00	0.00	0.00	0.00	0.00
<b>SIGNING (1"=50')</b>					
Sign Layout Sheets	1.00	0.50	0.50	1.00	1.00
Sign X-Section	3.00	1.00	3.00	1.00	3.00
Sign Panel Details	3.00	0.50	1.50	0.50	1.50
Special Drawings	3.00	0.25	0.75	0.25	0.75
	0.00	0.00	0.00	0.00	0.00
<b>SIGNALIZATION (Willie Cooper @ SR 287 Interchange)</b>					
Signal Layout	1.00	2.50	2.50	5.75	5.75
Signal Detail	1.00	0.75	0.75	1.50	1.50
Phasing Detail	1.00	0.25	0.25	0.50	0.50
Special Details	2.00	0.25	0.50	0.25	0.50
	0.00	0.00	0.00	0.00	0.00
<b>UTILITY SHEETS (1"=50')</b>					
Utility Locations	2.00	1.00	2.00	1.00	2.00
	0.00	0.00	0.00	0.00	0.00
<b>DRAINAGE SECTIONS</b>					
Pipe & Culvert X-Sect./Hydraulic Computations	6.00	1.50	9.00	1.50	9.00
Bridge Hydraulics	1.00	10.00	10.00	2.00	2.00
Drainage Detail Sheets	3.00	1.00	3.00	1.00	3.00
	0.00	0.00	0.00	0.00	0.00
	0.00	0.00	0.00	0.00	0.00

Baldwin County

ROADWAY PLANS SHEET TITLE	NO OF SHEETS	ESTIMATED MAN-DAYS			
		ENGINEER		Designer	
		SHEET	TOTAL	SHEET	TOTAL
<b>SOIL SHEETS</b>					
Soil Boring Logs	10.00	0.00	0.00	0.25	2.50
Soil Profile	0.00	0.00	0.00	0.00	0.00
	0.00	0.00	0.00	0.00	0.00
<b>LIGHTING</b>					
Plan Layout	0.00	0.00	0.00	0.00	0.00
Single Line Diagrams	0.00	0.00	0.00	0.00	0.00
Photometric Analysis	0.00	0.00	0.00	0.00	0.00
Voltage Drop Analysis	0.00	0.00	0.00	0.00	0.00
Special Details	0.00	0.00	0.00	0.00	0.00
	0.00	0.00	0.00	0.00	0.00
<b>EROSION CONTROL (1"=50')</b>					
Plan sheets	8.00	1.50	12.00	1.50	12.00
<b>ROADWAY CROSS SECTIONS (@ 100' Intervals)</b>					
Main Roadway	58.00	0.50	29.00	0.50	29.00
Crossroads (SR-287)	6.00	0.50	3.00	0.50	3.00
Earthwork Balancing	2.00	0.25	0.50	0.25	0.50
<b>REVIEW COMMENTS</b>					
30% Review			1.00		1.00
60% Review			1.00		1.00
90% Review			1.00		1.00
<b>Bi-Monthly Design Status Meetings</b>					
			8.00		4.00
<b>ALDOT Permit &amp; Coordination</b>					
			2.00		1.50
<b>Right-of-Way Field Mapping</b>					
			1.50		2.00
<b>Stormwater Permits</b>					
			1.00		2.00
<b>Cost Estimates</b>					
			2.00		1.00
<b>Specs and Bid Procurements Support</b>					
			5.00		2.00
<b>SUB-TOTAL</b>					
	193.50		172.53		188.18
10% Supervision			36.07		
<b>TOTALS</b>					
	193.50		172.53		188.18

**Baldwin County**

<b>Project No.</b>	TBD
<b>County</b>	Baldwin
<b>Description</b>	Willie Cooper Road Extension
<b>Scope of Work</b>	Roadway Plans
<b>Project Length</b>	2.17 Miles
<b>Consultant</b>	Volkert, Inc.

**Out-of-pocket Expenses (Roadway Plans)**

**TRAVEL COST**

Mileage Cost	Trips	Miles/Trip	\$/Mile	Total
Travel to Site	5	36	\$0.725	\$ 130.50
Plan Reviews	2	36	\$0.725	\$ 52.20
	0	0	\$0.000	\$ -
	0	0	\$0.000	\$ -
<b>Total Mileage Cost</b>				<b>\$ 182.70</b>

Subsistence Cost	Days	# People	\$/Day	Total
Travel allowance (6 hour trips)	0	0	\$0.00	\$ -
Travel allowance (12 hour trips - meal provided by others)	0	0	\$0.00	\$ -
Travel allowance (12 hour trips)	0	0	\$0.00	\$ -
Travel allowance (overnight)**	0	0	\$0.00	\$ -
				\$ -
<b>Total Subsistence Cost</b>				<b>\$ -</b>
<b>Total Travel Cost</b>				<b>\$ 182.70</b>

**PRINTING / REPRODUCTION COST**

Type of printing/reproduction	# of Sets	Sheets/Set	Total Sheets	Cost/Sheet	Total
	0	0	0	\$ -	\$ -
	0	0	0	\$ -	\$ -
	0	0	0	\$ -	\$ -
	0	0	0	\$ -	\$ -
	0	0	0	\$ -	\$ -
	0	0	0	\$ -	\$ -
<b>Total Printing/Reproduction Cost</b>					<b>\$ -</b>

<b>Communication Cost (telephone, fax, etc.)</b>	<b>Total</b>
	\$ -

<b>Postage Cost (overnight, stamps, etc.)</b>	<b>Total</b>
	\$ -

<b>Other (provide description on next line)</b>	<b>Total</b>
	\$ -

<b>Total Out-of-pocket Expenses</b>		<b>\$ 182.70</b>
-------------------------------------	--	------------------

**Comments:**



FEE COMPUTATIONS FOR PREPARING BRIDGE DESIGN & PLANS

Consultant: **Volkert, Inc.**

Submittal Date:

PROJECT NO: TBD  
 DESCRIPTION: Willie Cooper Road Extension  
 COUNTY: Baldwin  
 LOCATION: Willie Cooper Rd Extension

SHEET TITLE	NO. OF SHEETS	CONSULTANT ESTIMATED MANDAYS		TOTAL DAYS	TOTAL DAYS
		ENGR. days/sheet	TECH. days/sheet		
Preliminary Bridge Layout	<input type="text" value="4"/>	<input type="text" value="1"/>	4	<input type="text" value="2"/>	8
Index, Notes, Quantities, & Required	<input type="text" value="2"/>	<input type="text" value="1"/>	2	<input type="text" value="3"/>	6
Bridge General Plan & Elevation	<input type="text" value="2"/>	<input type="text" value="1"/>	2	<input type="text" value="3"/>	6
<b>SUBTOTAL</b>	8		8		20
<b>BRIDGE SUPERSTRUCTURE DESIGN &amp; DETAIL</b>					
Span Details	<input type="text" value="3"/>	<input type="text" value="5"/>	15	<input type="text" value="6"/>	18
Girder Details	<input type="text" value="3"/>	<input type="text" value="5"/>	15	<input type="text" value="6"/>	18
Bearings, Diaphragms, Miscellaneous Details	<input type="text" value="1"/>	<input type="text" value="3"/>	3	<input type="text" value="1"/>	1
<b>SUBTOTAL per SPAN</b>	7		33		37
Number of individual spans/girders requiring design and detail		<input type="text" value="3"/>			
<b>SUBTOTAL</b>	21		99		111
Will bridge be in vertical curve or superelevation/transition? Enter "y" for yes, enter "n" for no		<input type="text" value="y"/>			
Incremental (1/10 point) Elevations (when required)	<input type="text" value="3"/>	<input type="text" value="2"/>	6	<input type="text" value="3"/>	9
<b>BRIDGE SUBSTRUCTURE DESIGN &amp; DETAIL</b>					
Abutment Details	<input type="text" value="2"/>	<input type="text" value="5"/>	10	<input type="text" value="5"/>	10
Number of individual abutments requiring design and detail		<input type="text" value="2"/>			
<b>SUBTOTAL</b>	4		20		20
Bent Details	<input type="text" value="2"/>	<input type="text" value="5"/>	10	<input type="text" value="5"/>	10
Number of individual bents requiring design and detail		<input type="text" value="6"/>			
<b>SUBTOTAL</b>	12		60		60
Complexity Effort - (entered as mandays) additional effort required due to complexity of design such as skew, horiz. and vertical curve			<input type="text" value="5"/>		<input type="text" value="5"/>
Load Rating			14		
<b>SHOP DRAWING REVIEW</b>					
Prestressed Girders			<input type="text" value="12"/>		2
<b>TOTALS - Total # Shts</b>	45		224		227

28 Spans Bridge - 2240FT X 28FT Gutter-To-Gutter (30'-5" Out-to-Out) Bridge with FIB girders

### FEE COMPUTATIONS FOR BRIDGE PLANS

Consultant: <b>Volkert, Inc.</b>	PROJECT NO: TBD DESCRIPTION: Willie Cooper Road Extension COUNTY: Baldwin LOCATION: Willie Cooper Rd Extension
----------------------------------	---

EMPLOYEE WAGES:

Project Manager (10% of Engineer)	>>>>>>>>	22.40	Days		\$640.00	per Day	=	\$14,336.00
Engineer		224.00	Days	x	\$505.00	per Day	=	\$113,120.00
Technician		227.00	Days	x	\$351.00	per Day	=	\$79,677.00

TOTAL DIRECT LABOR = \$207,133.00

Combined Overhead (%) >>>>> 140.92 % x \$207,133.00 = \$291,891.82

SUBTOTAL COSTS = \$499,024.82

Out-of-pocket expense\*\* = \$0.00

PROFIT (10%) = \$49,902.48

**TOTAL BRIDGE FEE = \$548,927.30**

\*\*See Grand Total Fee sheet

<b>Project No.</b> <u>TBD</u>
<b>County</b> <u>Baldwin</u>
<b>Description</b> <u>Willie Cooper Road Extension</u>
<b>Scope of Work</b> <u>Bridge Design</u>
<b>Project Length</b> <u>2.17 Miles</u>
<b>Consultant</b> <u>Volkert, Inc.</u>
<b>Out-of-pocket Expenses (Bridge Plans)</b>

**TRAVEL COST**

Mileage Cost	Trips	Miles/Trip	\$/Mile	Total
Trips to Site	0	0	\$0.000	\$ -
Trips to Review meetings (Montgomery)	0	0	\$0.000	\$ -
	0	0	\$0.000	\$ -
	0	0	\$0.000	\$ -
<b>Total Mileage Cost</b>				<b>\$ -</b>

Subsistence Cost	Days	# People	\$/Day	Total
Travel allowance (6 hour trips)	0	0	\$0.00	\$ -
Travel allowance (12 hour trips - meal provided by others)	0	0	\$0.00	\$ -
Travel allowance (12 hour trips)	0	0	\$0.00	\$ -
Travel allowance (overnight)***	0	0	\$0.00	\$ -
				\$ -
<b>Total Subsistence Cost</b>				<b>\$ -</b>
<b>Total Travel Cost</b>				<b>\$ -</b>

**PRINTING / REPRODUCTION COST**

Type of printing/reproduction	# of Sets	Sheets/Set	Total Sheets	Cost/Sheet	Total
90%	0	0	0	\$ -	\$ -
Final Plans	0	0	0	\$ -	\$ -
	0	0	0	\$ -	\$ -
	0	0	0	\$ -	\$ -
	0	0	0	\$ -	\$ -
	0	0	0	\$ -	\$ -
<b>Total Printing/Reproduction Cost</b>					<b>\$ -</b>

<b>Communication Cost (telephone, fax, etc.)</b>	<b>Total</b>
	<b>\$ -</b>

<b>Postage Cost (overnight, stamps, etc.)</b>	<b>Total</b>
	<b>\$ -</b>

<b>Other (provide description on next line)</b>	<b>Total</b>
	<b>\$ -</b>

<b>Total Out-of-pocket Expenses</b>	<b>\$ -</b>
-------------------------------------	-------------

**Comments:**

**Baldwin County**

<b>Project No.</b>	TBD
<b>County</b>	Baldwin County
<b>Description</b>	Willie Cooper Road Extension - Roadway Design
<b>Scope of Work</b>	Utility Coordination
<b>Project Length</b>	2.17 Miles
<b>Consultant</b>	Volkert, Inc.
<b>Fee Proposal (Utility Coordination)</b>	

<b>PERSONNEL COST</b>			
	Man-days	x Daily Rate	
Project Manager (10% of Eng.+ Eng. Tech./CADD)	1.80	\$ 640.00	\$ 1,152.00
Engineer	11.00	\$ 505.00	\$ 5,555.00
Engineering Technician/CADD	7.00	\$ 351.00	\$ 2,457.00
Clerical	0.00	\$ 268.00	\$ -
<b>Total Direct Labor</b>			\$ 9,164.00
Combined Overhead (%)	140.92		\$ 12,913.91
Out-of-Pocket Expenses**			\$ 130.50
<b>Sub-Total</b>			\$ <b>22,208.41</b>
Operating Margin (15%)			\$ 3,331.26
<b>Sub-Total</b>			\$ <b>25,539.67</b>
<b>SUB-CONSULTANTS (attach man-day &amp; fee FROM each sub-consultant; show total fee for each here)</b>			
			\$ -
			\$ -
			\$ -
Subconsultant Administration Expense (10%)			\$ -
<b>Sub-Total</b>			\$ <b>25,539.67</b>
Facilities Capital Cost of Money (% of Direct Labor)	0.84		\$ 76.98
<b>TOTAL FEE</b>			\$ <b>25,616.65</b>

\*\*See Grand Total Fee sheet

## Baldwin County

<b>Project Number</b>	TBD
<b>County</b>	Baldwin County
<b>Description</b>	Willie Cooper Road Extension - Roadway Design
<b>Scope of work</b>	Utility Coordination
<b>Length</b>	2.17 miles
<b>Consultant</b>	Volkert, Inc.

<b>Utility Coordination</b>		<b>MANDAYS</b>	
		Engineer	CADD
<b>Assume Four (5) Utility Companies Requiring Coordination</b>			
1. Send plans to utility companies and request agreements.		0.50	1.00
2. Review agreements, estimates, and utility relocation plans.		3.50	0.00
3. Discuss alternatives with roadway design and utility owners.		2.50	0.00
4. Obtain revised agreements and plans from utility owners if changes result from task 3.		1.00	0.50
5. Plot relocated facilities on utility sheets		1.00	5.00
6. Obtain utility certificate information from utility owners. Information to include how work will be done and begin and end dates for relocations		2.50	0.50
<b>Sub Totals</b>		<b>11.00</b>	<b>7.00</b>
<b>TOTALS</b>	<b>UTILITY</b>	<b>11.00</b>	<b>7.00</b>

**Baldwin County**

<b>Project No.</b>	TBD
<b>County</b>	Baldwin County
<b>Description</b>	Willie Cooper Road Extension - Roadway Design
<b>Scope of Work</b>	Utility Coordination
<b>Project Length</b>	2.17 Miles
<b>Consultant</b>	Volkert, Inc.

**Out-of-pocket Expenses (Utility Coordination)**

**TRAVEL COST**

Mileage Cost	Trips	Miles/Trip	\$/Mile	Total
Travel to Site	3	60	\$0.725	\$ 130.50
	0	0	\$0.000	\$ -
	0	0	\$0.000	\$ -
	0	0	\$0.000	\$ -
<b>Total Mileage Cost</b>				<b>\$ 130.50</b>

Subsistence Cost	Days	# People	\$/Day	Total
Travel allowance (6 hour trips)	0	0	\$0.00	\$ -
Travel allowance (12 hour trips - meal provided by others)	0	0	\$0.00	\$ -
Travel allowance (12 hour trips)	0	0	\$0.00	\$ -
Travel allowance (overnight)***	0	0	\$0.00	\$ -
				\$ -
<b>Total Subsistence Cost</b>				<b>\$ -</b>
<b>Total Travel Cost</b>				<b>\$ 130.50</b>

**PRINTING / REPRODUCTION COST**

Type of printing/reproduction	# of Sets	Sheets/Set	Total Sheets	Cost/Sheet	Total
	0	0	0	\$ -	\$ -
	0	0	0	\$ -	\$ -
	0	0	0	\$ -	\$ -
	0	0	0	\$ -	\$ -
	0	0	0	\$ -	\$ -
	0	0	0	\$ -	\$ -
<b>Total Printing/Reproduction Cost</b>					<b>\$ -</b>

<b>Communication Cost (telephone, fax, etc.)</b>	<b>Total</b>
	\$ -

<b>Postage Cost (overnight, stamps, etc.)</b>	<b>Total</b>
	\$ -

<b>Other (provide description on next line)</b>	<b>Total</b>
	\$ -

<b>Total Out-of-pocket Expenses</b>		<b>\$ 130.50</b>
-------------------------------------	--	------------------

**Comments:**