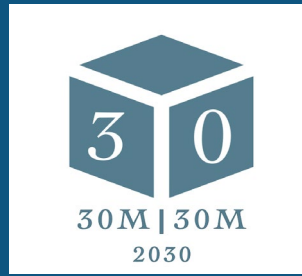


30 Cubed County/Municipal Transportation Infrastructure Partnership Program

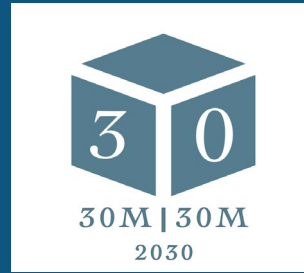


30M | 30M

2030



- ▶ The 30 Cubed Program is locally funded and aimed at fostering collaboration with municipalities across the County with the objective of enhancing capacity and connectivity of the local roadway system.
- ▶ The County Commission is designating thirty million dollars (\$30M) to be matched with thirty million dollars (\$30M) in municipal funding for various types of capacity and connectivity projects.
- ▶ The goal is to have \$60 Million of these projects Constructed, under Construction or under Contract by 2030.
- ▶ \$30M by County, \$30M by Municipalities, by 2030 (30 by 30 by 30) becomes the
30 Cubed Program
- ▶ The 30 Cubed Program is in addition to all other current and traditional County Highway Department roadway initiatives or programs already in place.

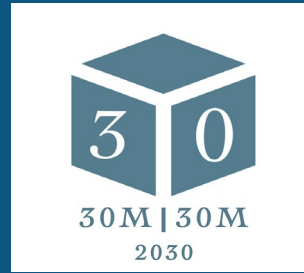


► **Community Impact**

- ❑ Projects will be evaluated by the overall impact and level of benefit to the regional transportation network.
- ❑ Greatest transportation improvement needs are along County/Municipal jurisdictional boundary transitions.
- ❑ The program is aimed at improving Community traffic issues on local roads regardless of jurisdictional boundaries or roadway ownership.

► **Joint County and Municipal Projects**

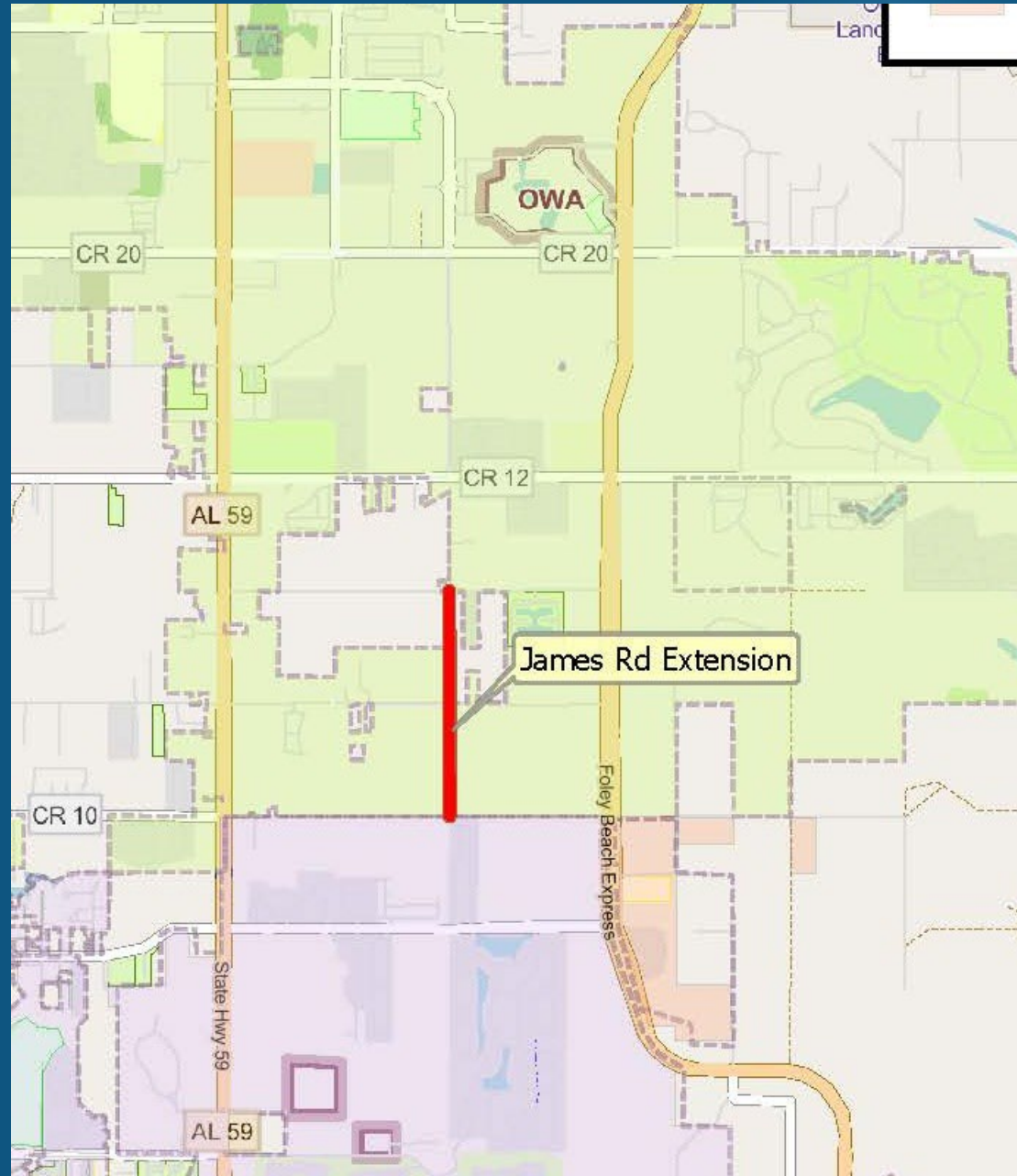
- ❑ Program offers any municipality the opportunity to voluntarily partner with County to improve capacity or connectivity, provided it serves a regional benefit.
- ❑ Projects are prioritized by the level of Municipal financial commitment, level of project management participation, and timeliness of project results.
- ❑ Minimum 50 / 50 cost share partnership using local funding.



► 30 Cubed is Uniquely Innovative

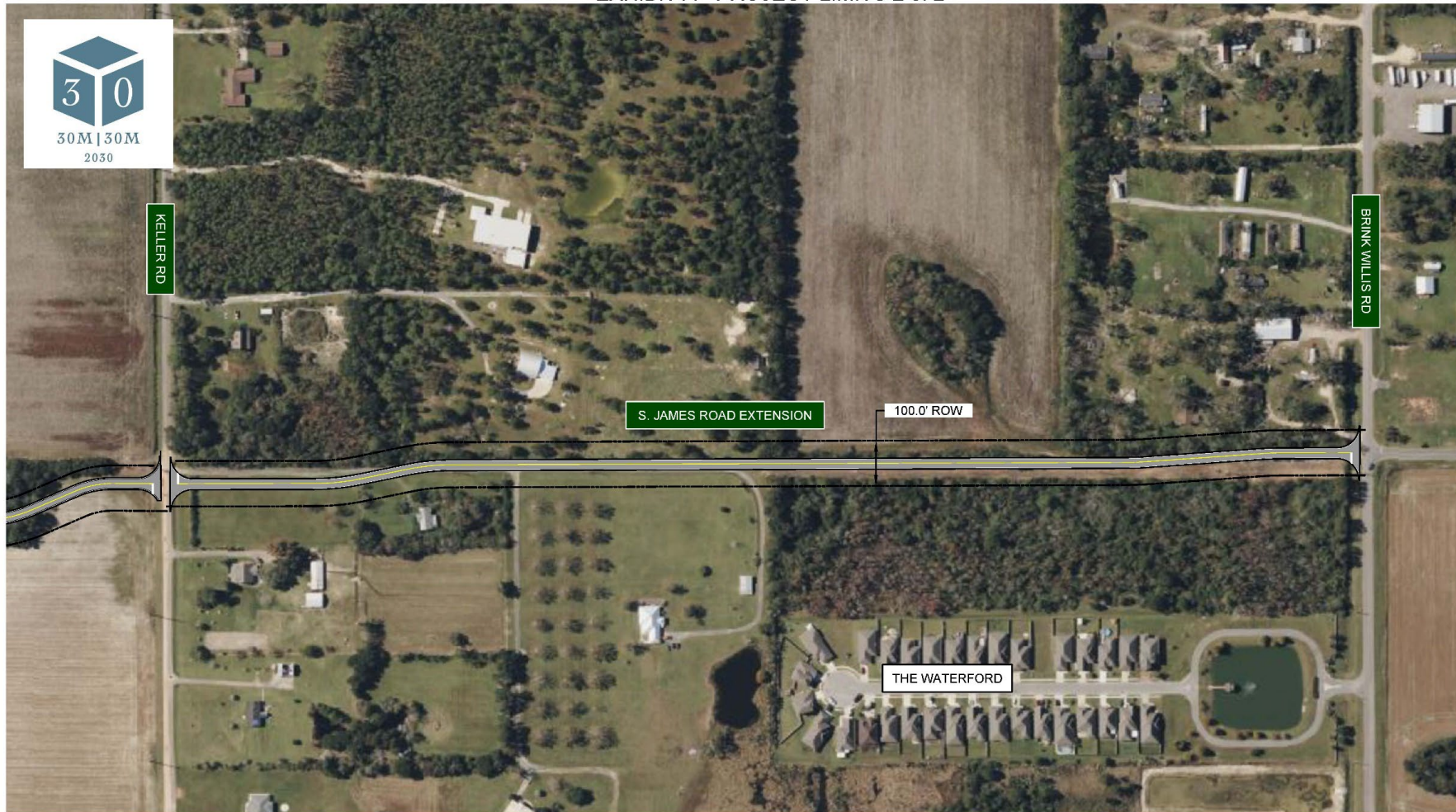
- ❑ First locally developed and locally funded transportation partnership program of this magnitude ever introduced in not only Baldwin County, but the State of Alabama.
- ❑ Only locally funded County/Municipal transportation partnership program of this magnitude in the nation, that we're aware of.
- ❑ 30 Cubed is uniquely designed to allow municipalities of any size the ability to voluntarily participate and partner.
- ❑ Through local agency management and funding, 30 Cubed is uniquely designed to accomplish significant transportation infrastructure projects in a timely and cost-effective manner by avoiding Federal and State bureaucracy.

James Road Extension

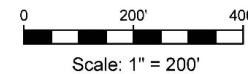
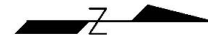


James Road Extension

EXHIBIT A - PROJECT LIMITS 2 of 2

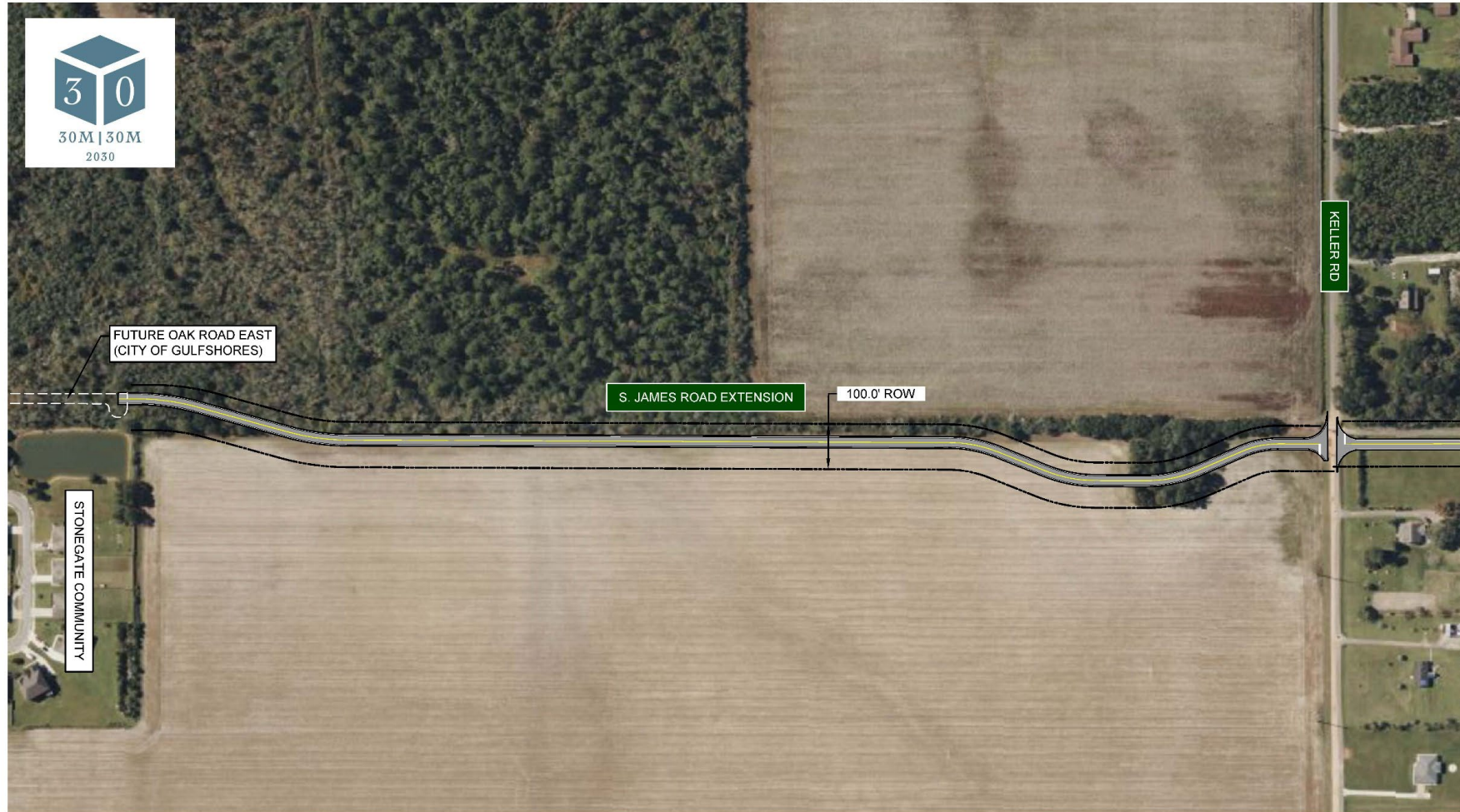


S. JAMES ROAD EXTENSION
CONCEPTUAL SKETCH



James Road Extension

EXHIBIT A - PROJECT LIMITS 1 of 2



S. JAMES ROAD EXTENSION
CONCEPTUAL SKETCH

