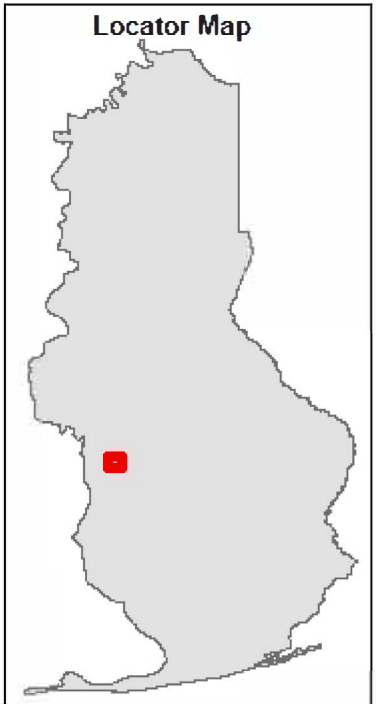
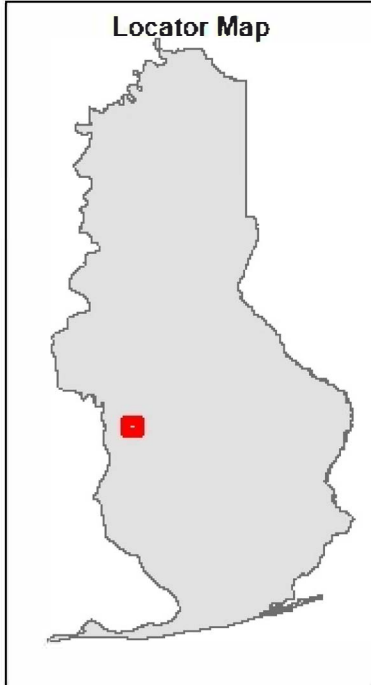
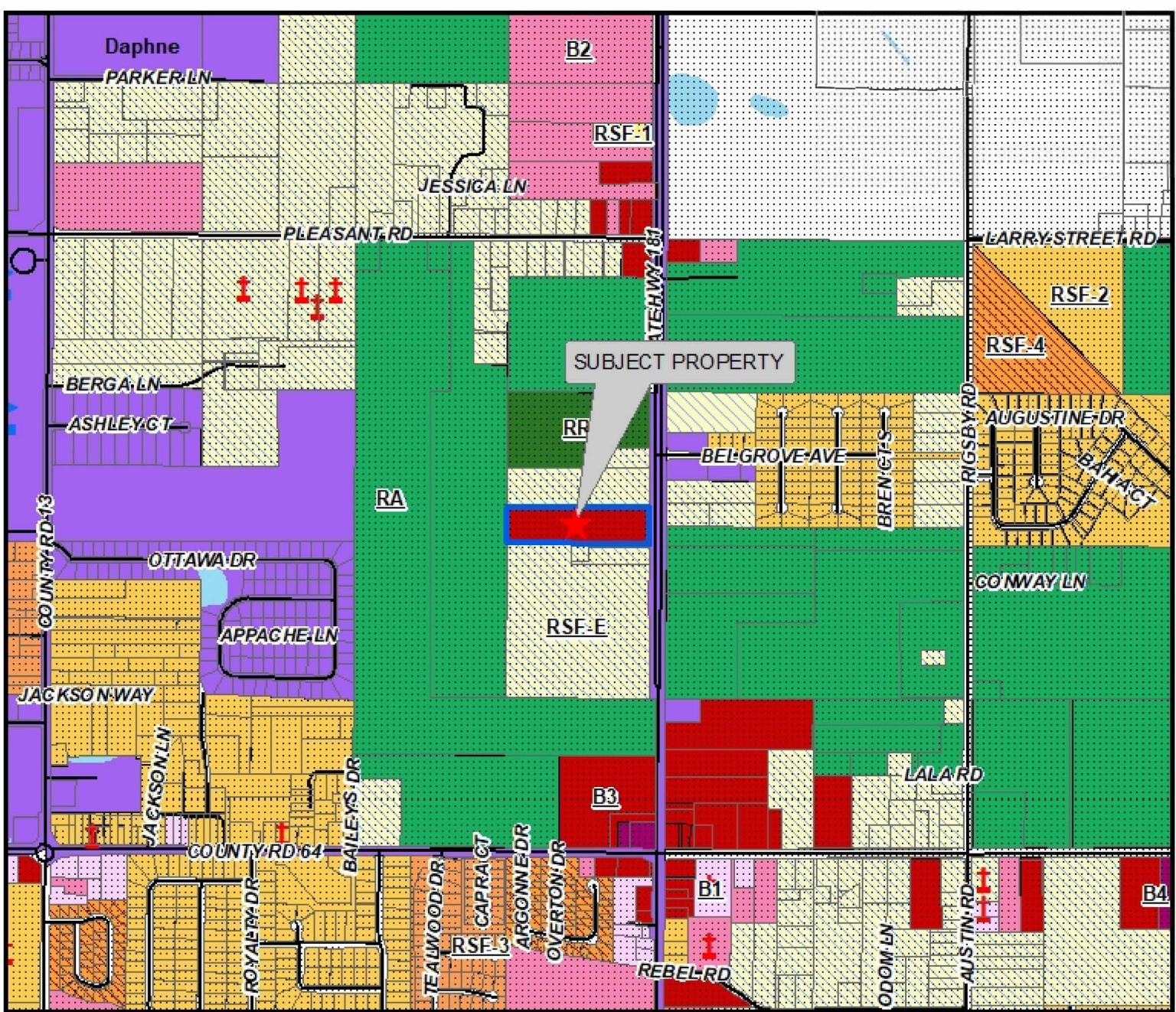


-  Place of Worship
-  School Locations
-  911 STREETS
-  Parcels

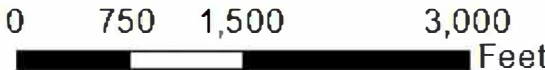
BOTTLES UP MOBILE, INC DBA BELFOREST
 26503 HWY 181, DAPHNE, AL 36526
 ABC LICENSE



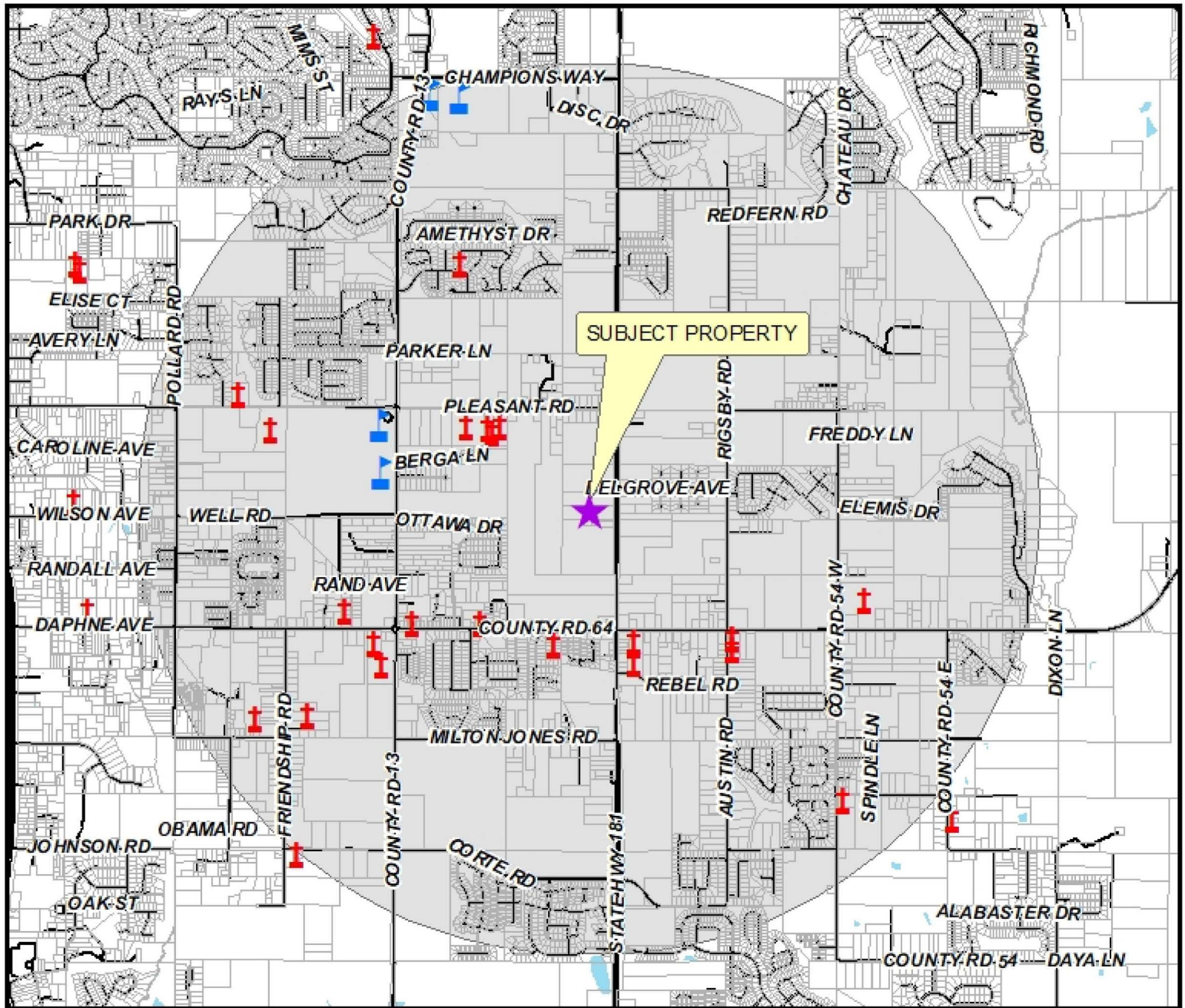
The information contained in this representation of digital data distributed by the Baldwin County Commission's Planning and Zoning Department is derived from a variety of public and private sources and is considered to be dependable. However, the accuracy, completeness, currency, reliability, or stability of information or data contained in or generated from the County Geographic Database is not guaranteed. The Baldwin County Commission makes no warranties, expressed or implied, as to the accuracy, completeness, currency, reliability, or stability of information or data contained in or generated from the County Geographic Database for any particular purpose. Additionally, the Baldwin County Commission or any agent, servant, or employee thereof assumes no liability associated with the use of this data, and assumes no responsibility to maintain it in any matter or form. For more information concerning this map call 251.580.1855.



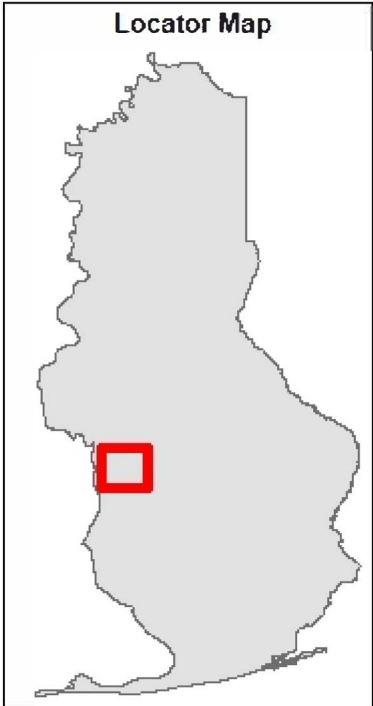
BOTTLES UP MOBILE, INC DBA BELFOREST
 26503 HWY 18 1, DAPHNE, AL 36526
 REQUESTING ABC LICENSE



The information contained in this representation of digital data distributed by the Baldwin County Commission's Planning and Zoning Department is derived from a variety of public and private sources and is considered to be dependable. However, the accuracy, completeness, and currency thereof are not guaranteed. The Baldwin County Commission makes no warranties, expressed or implied, as to the accuracy, completeness, currency, reliability, or suitability of information or data contained in or generated from the County Geographic Database for any particular purpose. Additionally, the Baldwin County Commission or any agent, servant, or employee thereof assumes no liability associated with the use of this data, and assumes no responsibility to maintain it in any matter or form. For more information concerning this map call 251-580-3855.



BOTTLES UP MOBILE, INC DBA BELFOREST
 26503 HWY 181, DAPHNE, AL 36526
 ABC LICENSE



The information contained in this representation of digital data distributed by the Baldwin County Commission's Planning and Zoning Department is derived from a variety of public and private sources and is considered to be accurate. However, the accuracy, completeness, currency, reliability, or suitability of information or data contained in or generated from the County Geographic Database for any particular purpose. Additionally, the Baldwin County Commission or any agent, servant, or employee thereof assumes no liability associated with the use of this data, and assumes no responsibility to maintain it in any matter or form. For more information concerning this map call 251.580.1850.



BALDWIN COUNTY, ALABAMA

PLANNING AND ZONING DEPARTMENT

Main Office - 251.580.1655
22251 Palmer St., Robertsdale, AL 36567

Foley Office - 251.972.8523
201 East Section Ave., Foley, AL 36535

ZONING VERIFICATION REQUEST

Case #: ZV24-000467

**This zoning verification is for informational purposes only.
Specific uses for the zoning classification should be verified through the
Baldwin County Zoning Ordinance and associated maps
or through consultation with the Planning and Zoning staff.**

Applicant

Bottles Up Mobile Inc. DBA Belforest
10349 Taylor Harper Blvd
Grand Bay AL 36541

Site Information

Parcel ID Number: 05-43-05-15-0-000-009.000
Physical Address (E-911): 26503 STATE HWY 181 DAPHNE, AL 36526

Project Information

Description of Proposed Use: Apply for special event liquor license for a 1 day only event

Staff Review

City Limits: Unincorporated Baldwin County
Extra Territorial Jurisdiction (ETJ): N/A
Building Permit Jurisdiction: Baldwin County
Zoning Status: Zoned
Planning District: 15: Belforest
Zoning Classification: B-3 General Business District
Fire District: Belforest 64/D1
Verification Status: Complete
Date of Verification: 10/22/2024
Planner's Comments:

Reviewed By: Linda Lee, Planner

A handwritten signature in blue ink that reads "Linda Lee".