

LEGEND

Jurisdictional Boundaries

Annexation

Corporate Boundary

Robertsdale

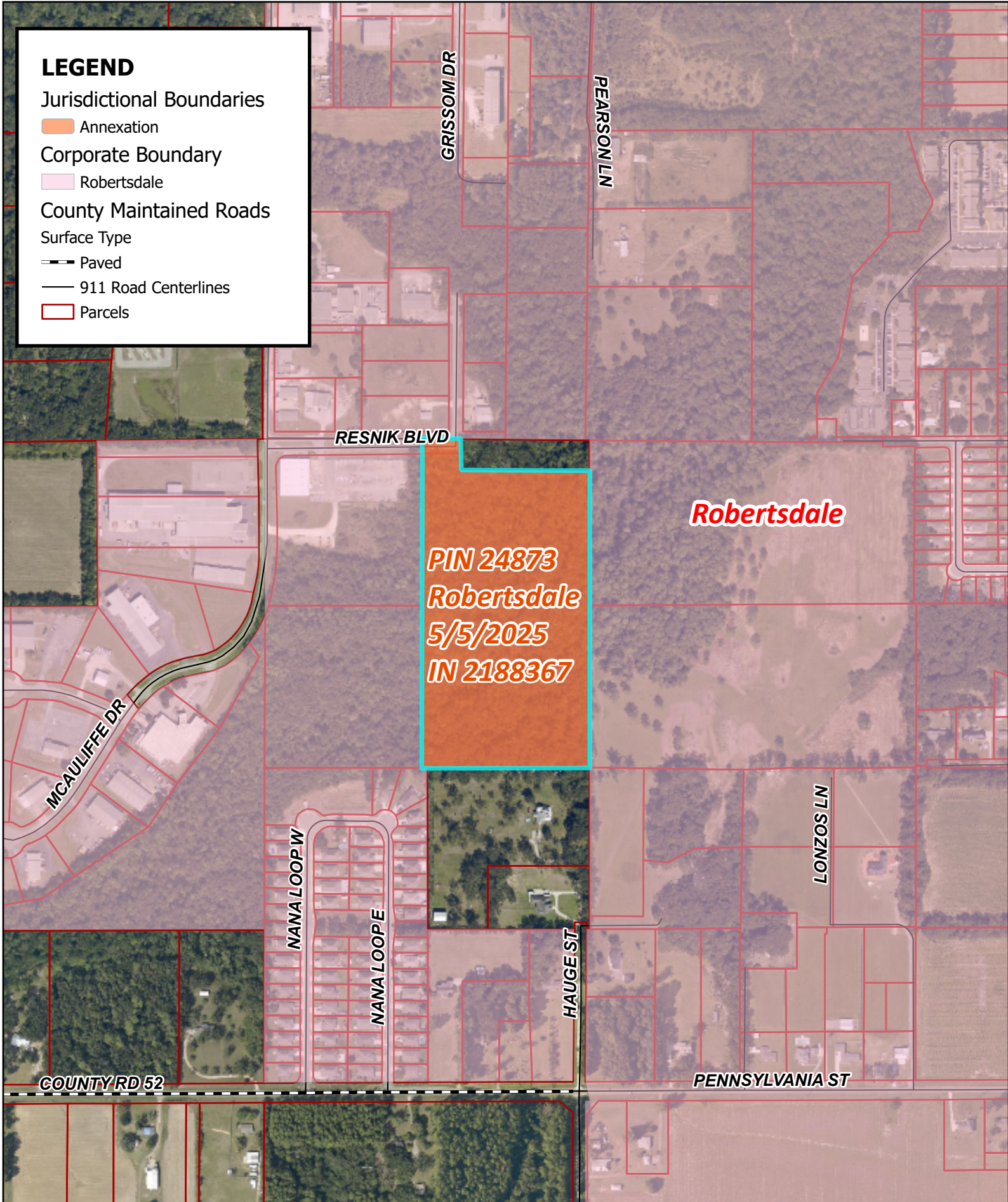
County Maintained Roads

Surface Type

Paved

911 Road Centerlines

Parcels



PIN 24873
Robertsdale
5/5/2025
IN 2188367

Robertsdale

Baldwin County Highway Department



2188367

BALDWIN COUNTY, ALABAMA
HARRY D'OLIVE, JR. PROBATE JUDGE
Filed/cert. 05/21/2025 11:08 AM
TOTAL \$19.00 3 Pages



ORDINANCE NO. 001-2025

BE IT ORDAINED BY THE CITY COUNCIL OF THE CITY OF ROBERTSDALE, ALABAMA,
AS FOLLOWS:

WHEREAS, the City Council of the City of Robertsdale, Alabama, has received a petition of annexation from Enoch and Penny Capps for the property located at 22655 Huguen Street, as a R-1 zone, and

WHEREAS, the Planning Commission of the City of Robertsdale has reviewed the proposed annexation of said petition and has recommended that the Council proceed with the annexation, and

WHEREAS, the property being considered for annexation is contiguous with the current city limits, and

WHEREAS, the following is a legal description of the property:

BEGINNING at an iron pin marker purported to be the Southeast corner of the East Half of the Northeast Quarter of the Northwest Quarter of Section 1, Township 6 South, Range 3 East, St. Stephens Meridian, Baldwin County, Alabama run South 89 degrees 35 minutes 45 second West, a distance of 667.30 feet to an iron pin marker being the Northeast corner of lot 18 of Nanafield Phase 1 as per its plat recorded on Slide 2344-F in the Judge of Probate's Office, Baldwin County, Alabama; thence run North 01 degrees 01 minutes 15 seconds West, a distance of 1,292.06 feet to an iron pin marker lying on the South Right-of-way line of Resnik Boulevard; thence run North 89 degrees 49 minutes 23 seconds East, along said South Right-of-way line a distance of 157.82 feet to an iron pin marker; thence run South 00 degrees 29 minutes 03 seconds East, a distance of 66.00 feet to a point; thence run South 89 degrees 41 minutes 00 seconds East, a distance of 508.91 feet to a point; thence run South 01 degrees 05 minutes 30 seconds East, a distance of 1,219.05 feet to the POINT OF BEGINNING. Said parcel contains 18.95 acres, more or less.

BE IT FURTHER ORDAINED THAT THE OFFICIAL ZONING MAP, AS AMENDED, BE FURTHER AMENDED TO REFLECT THIS CHANGE.

Adopted and approved by the City Council of the City of Robertsdale, Alabama,
on this 5th day of May, 2025.

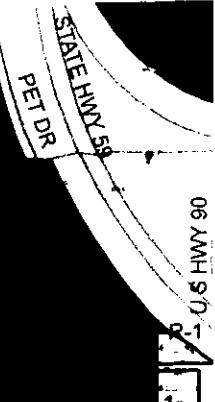

MAYOR

ATTEST:


CITY CLERK

CERTIFICATION:

I, Shannon Burkett, as City Clerk of the City of Robertsdale, Alabama, hereby certify that the above and foregoing copy of 1 (one) Ordinance Number 001-2025 is a true and correct copy of such Ordinance that was duly adopted by the City Council of the City of Robertsdale on the 5th day of May, 2025, as same appears in the official records of said City.



CAPPS ANNEXATION

