



Strategic Planning:
Baldwin County
Coroner's Office
2024



Mission Statement of the Office

- Accurately determine the cause and manner of death to provide details for Law Enforcement and Closure for families.
- To establish and maintain cooperative, professional relationships with all our community partners.
- To assist the bereaved in the loss of a loved one.
- To earn and hold the trust and respect of the citizens that we are privileged and honored to serve.



Strategic Goal 2020: Coroner's Office Expansion

- By 2025, Baldwin County will experience a Coroner's Office that is better aligned with the County's **Functional population** and able to handle a mass casualty event.

- Lead Dr. Brian Pierce, Coroner
- Team Troy Dyess, Coroner's Office
 Anthony Lowery, Sheriff's Office
 Tom Tyler, BCEMA
 Beth Hodges, Budget Director



Functional Population of Baldwin County Alabama

- Reached out to ADPH Epidemiologist: Stuart Hoyle
- Developed a Model to determine Functional Population of Baldwin County
- Based on 2021 Data

- Baldwin County: Peak 510,000

- Mobile County: Peak 610,000



BALDWIN COUNTY, ALABAMA

| | | | | |
|---|-----------|-----------|-----------|-----------|
| | 2018 | 2019 | 2020 | 2021 |
| Number of Travelers in Hotel/Motel Accommodations - Baldwin County* | 1,757,645 | 1,876,702 | 1,720,322 | 2,139,084 |
| | 2018 | 2019 | 2020 | 2021 |
| Residential Population of Baldwin County - 2021** | 218,022 | 223,234 | 229,287 | 239,294 |
| | 2018 | 2019 | 2020 | 2021 |
| Estimated Total Number of Visitors - Baldwin County* | 6,574,308 | 6,880,489 | 5,956,566 | 8,037,849 |

Estimated Population Increase in Baldwin County by Tourists in Hotel and Motel Accommodations by Month - 2021*

| | January | February | March | April | May | June | June | August | September | October | November | December |
|--|---------|----------|---------|---------|---------|---------|---------|---------|-----------|---------|----------|----------|
| Monthly Estimated Population (Residential + Hotel/Motel Tourist) | 331,988 | 331,988 | 331,988 | 495,984 | 495,984 | 495,984 | 510,245 | 510,245 | 510,245 | 331,988 | 331,988 | 331,988 |

*Alabama Economic Impact Report 2021: <https://tourism.alabama.gov/reports/>

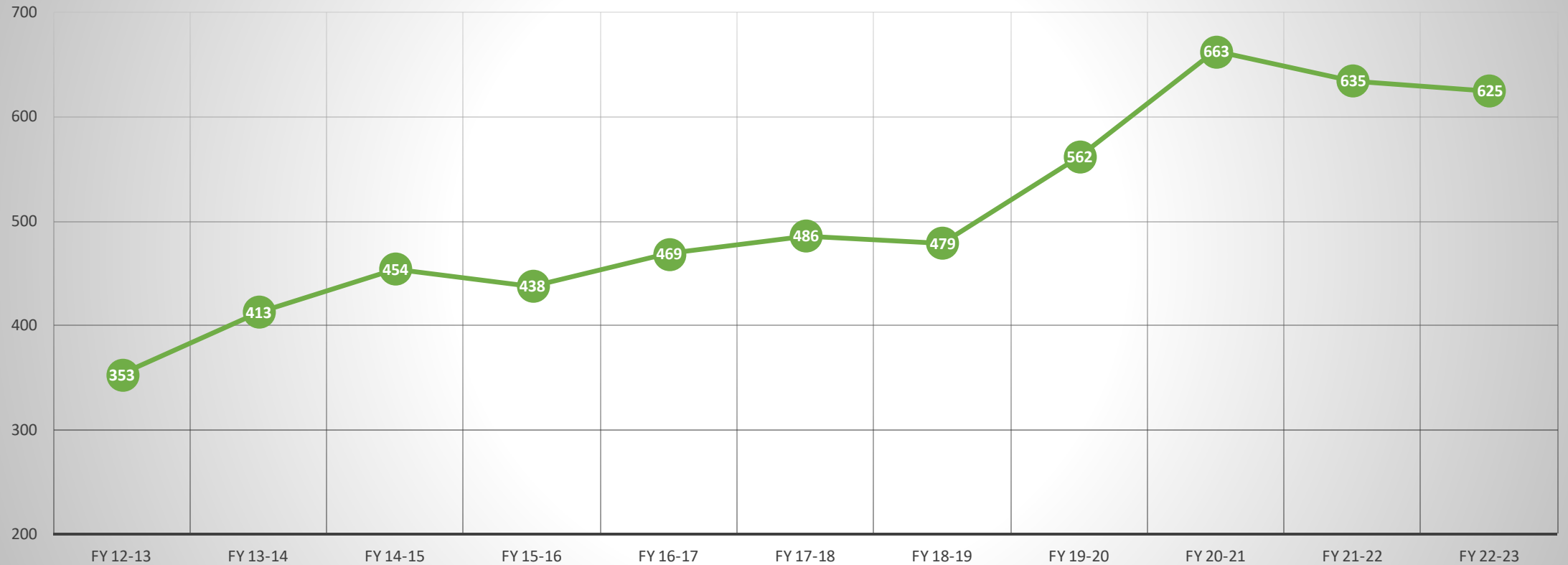
**CDC Wonder: Centers for Disease Control and Prevention, National Center for Health Statistics. National Vital Statistics System, Mortality 2018-2021 on CDC WONDER Online Database, released in 2021.

Strategic Goal: Coroner's Office

By 2025, Baldwin County will experience a Coroner's Office that is better aligned with the County's Functional population and handle a mass casualty/fatality event.



Number Coroner Cases Per Fiscal Year



of Cases / Total Deaths

% of Deaths

FY 18-19

479/2067

= 24% of all deaths

FY 19-20

562/2235

= 26% of all deaths

FY 20-21

663/2689

= 25% of all deaths

FY 21-22

635/2400

= 27 % of all deaths

FY 22-23

625/2337

= 27% of all deaths

What have we Done???



Developed a Blended FT and PT staff



Procured a fleet of
response vehicles
No longer using private
vehicles to respond to
Death Investigations



Received a Grant through NNPHI and through Cooperation with the County CIS Dept, to Develop a Coroner Case Management System



Coroner CMS

Dashboard

Cases

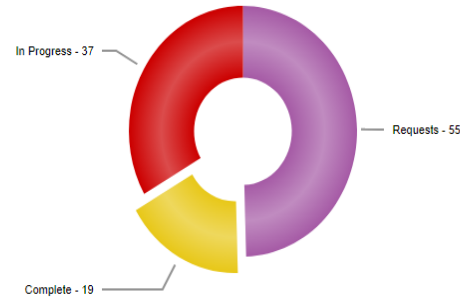
Requests ▾

Resources ▾

Admin ▾

Case Stats For The Current Month

Requests - Complete - In Progress



Total Cases
101

Current Month
56

Create Case

Open Case Requests

| Contact Name | Agency | Created/Submitted Date | |
|--------------|--------|------------------------|--|
|--------------|--------|------------------------|--|

Report Requests

| Contact Name | Agency | Created/Submitted Date | |
|--------------|--------|------------------------|--|
|--------------|--------|------------------------|--|

Received a 12 Person
Deployable Morgue for
Mass Fatality
Preparedness and
Body Surge
Through a MUA with
ADPH



Current Facility

- ~2100 Square Feet Total
- ~360 ft² Morgue and transfer space
- ~360 ft² Lab space
- ~150 ft² Breakroom/Conference Room
- ~100 ft² Climate Controlled Storage Space
- ~350 ft² Office space
- ~200 ft² Bathrooms/Mechanical

- ~500 ft² Modular Office space
- 2 Conex Containers for Storage/PPE/Medical Waste



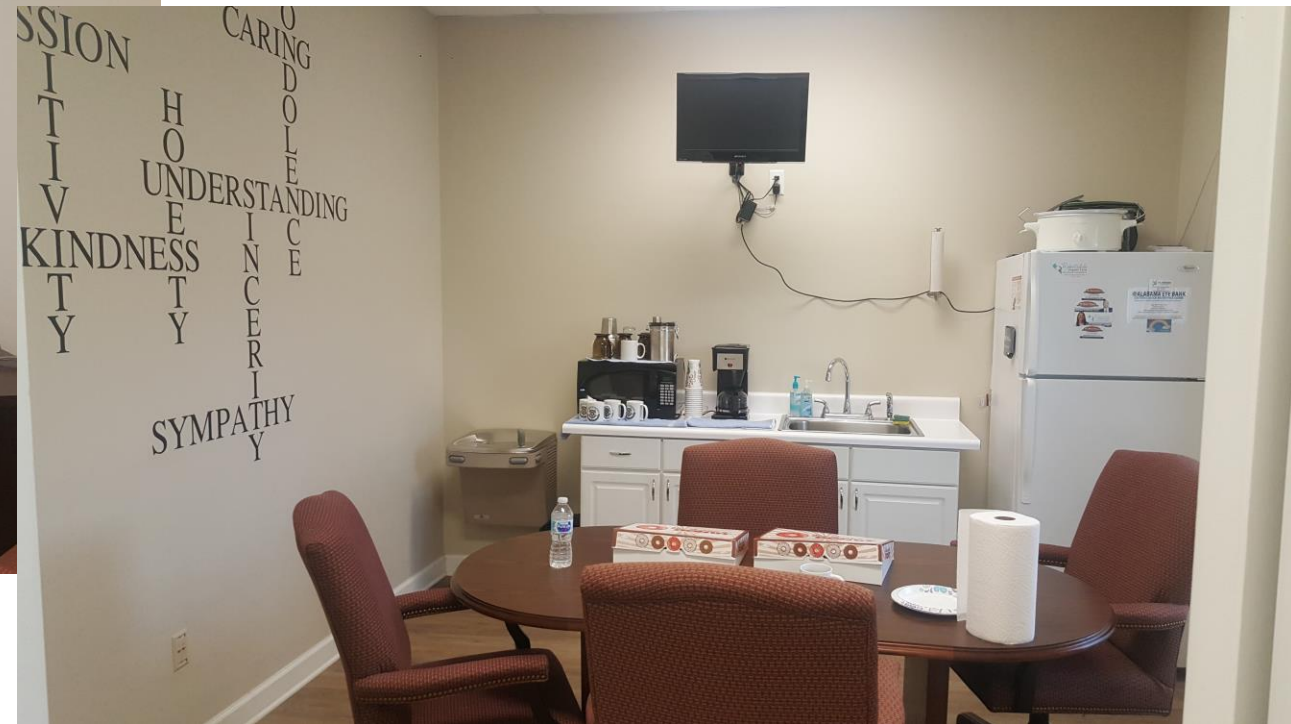
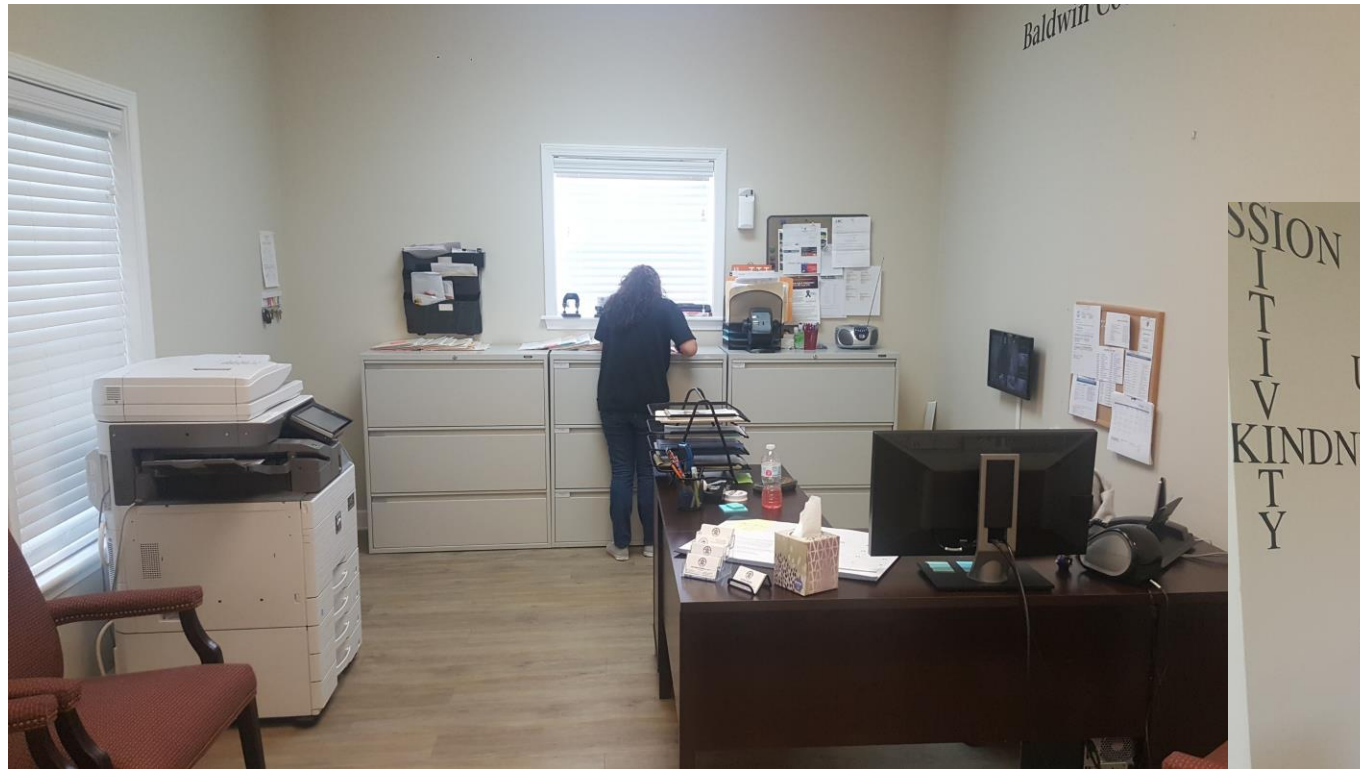


Scientific
Working Group
/ MDI

- Space needed, 19.5 ft²/ 1000 population
- 5,000 – 10,000 ft² Facility



Current Facility - Tour



Administration's Front office space also serves as:

- The main entry to the facility
- Lobby / waiting
- Access to the Break Room and the rest of the facility through an open hall
- Record storage
- Copy center
- Next of kin phone calls

Current Facility - Tour

Director's office



Staff office



Current Facility - Tour



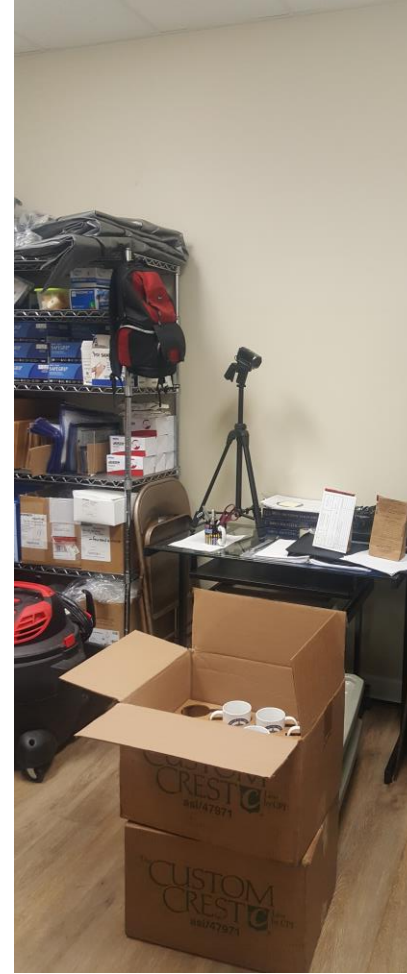
- Secure Storage (panoramic view)
- Case file storage
- Supply storage



- Field gear storage
- Office supplies
- Shop vac storage



- Camera equipment
- Unpacking of new materials
- Evidence storage



- Prescription drug storage
- Cremains storage

Current Facility - Tour

Body Examination space serves as the

- External decedent exam
- Tissue Harvesting space for Legacy of Hope
- The only clean space to open the body bag
- Evidence retravel
- Gurney storage
- Supply storage
- Electrical circuit breaker box access
- Biological waste storage



Current Facility - Tour



Access to Cooler storage area



Cadaver Freezer Storage unit (capacity 3)

- Biological waste storage
- Supply storage
- Decedent assist cart

Current Facility - Tour



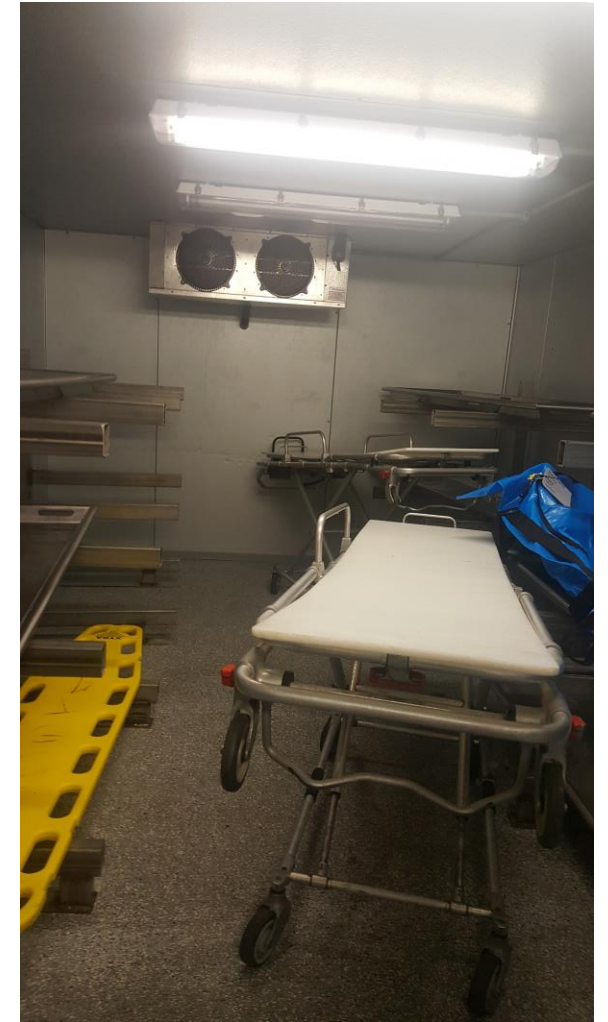
Decedent Cooler unit in the cooler area

- External view of the unit
- Mechanical access above



Inside view of the Cooler Unit

- 4 – cantilevered units (capacity 3 each)
- 2 - Gurneys

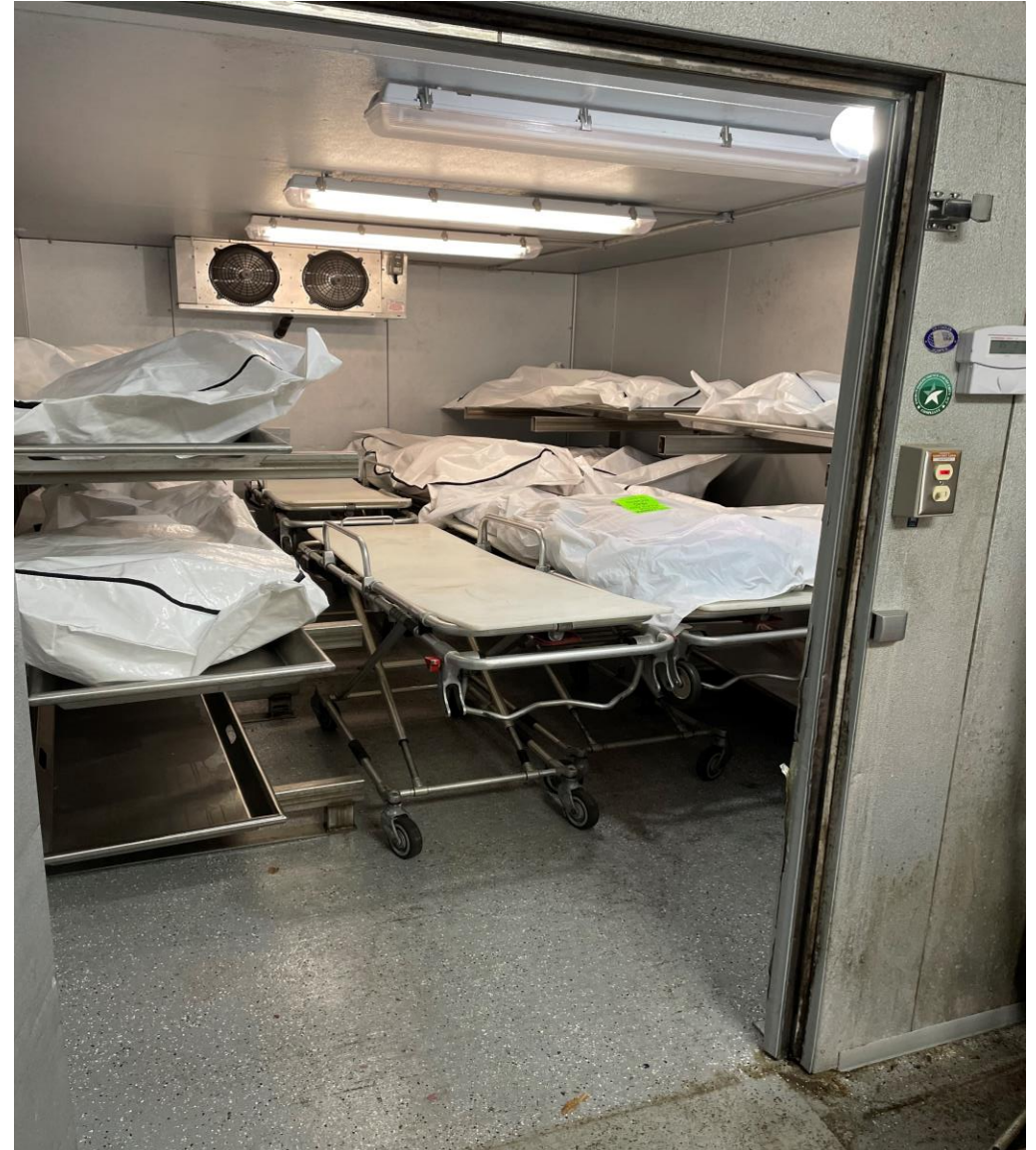


Month Body count Monthly Avg

| Month | Body count | Monthly Avg | | |
|--------|------------|-------------|-----------------|--|
| Oct-22 | 198 | | | |
| Nov-22 | 196 | | | |
| Dec-22 | 225 | 206.34 | Q4 Average 2022 | |
| Jan-23 | 149 | | | |
| Feb-23 | 133 | | | |
| Mar-23 | 173 | 151.67 | Q1 Average 2023 | |
| Apr-23 | 134 | | | |
| May-23 | 234 | | | |
| Jun-23 | 244 | 204 | Q2 Average 2023 | |
| Jul-23 | 236 | | | |
| Aug-23 | 251 | | | |
| Sep-23 | 241 | 242.67 | Q3 Average 2023 | |

242/30day = 8 bodies daily

Occupies 50% of our cooler space



Feasibility / Conceptual Study



conceptual design
BALDWIN COUNTY FORENSICS

Robertsdale, Alabama

prepared by



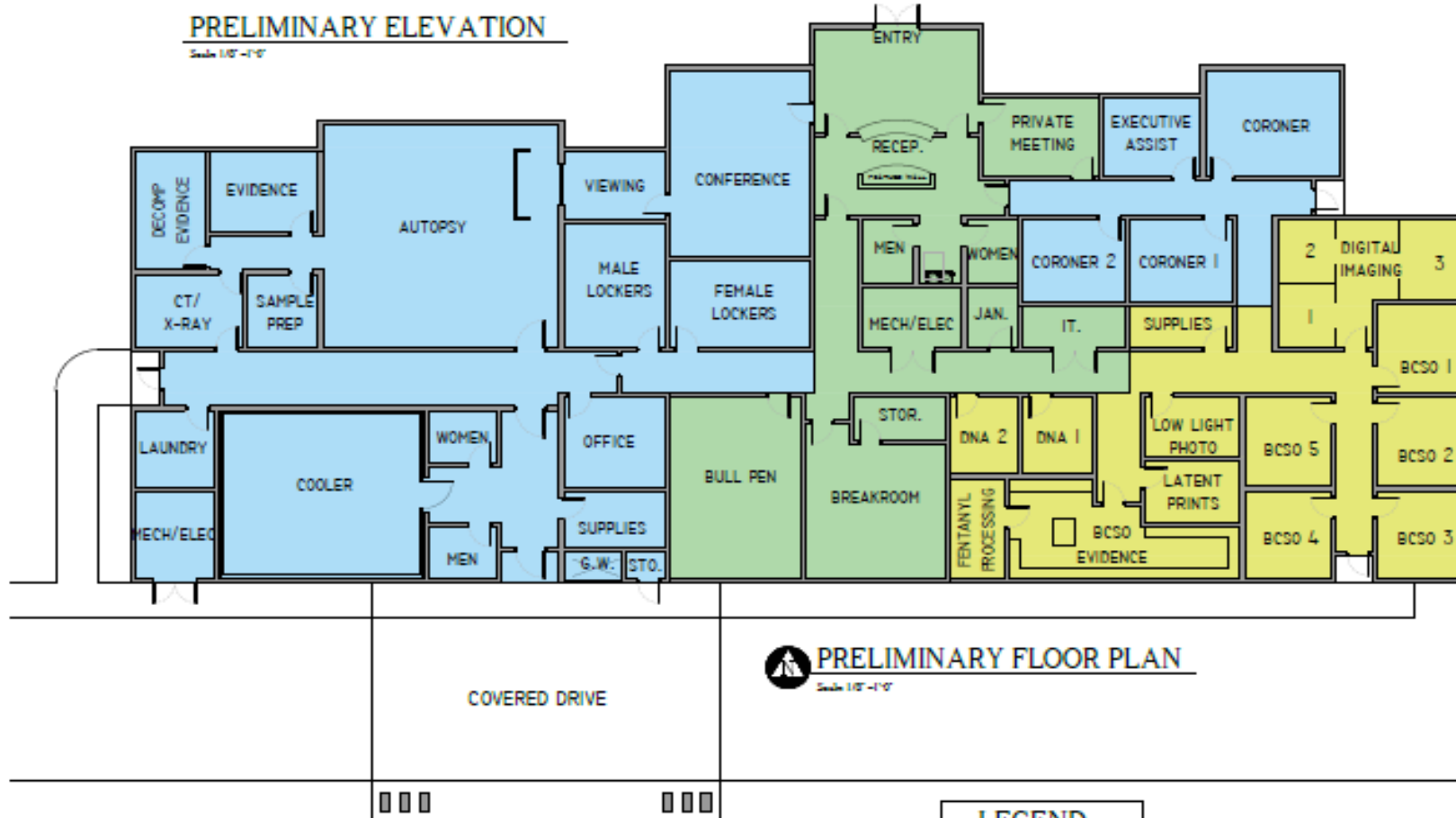
Adams • Stewart • Architects





PRELIMINARY ELEVATION

Scale 1/8" = 1'-0"



PRELIMINARY FLOOR PLAN

Scale 1/8" = 1'-0"

LEGEND

| | |
|----------|------------------------|
| 7,200 SF | BALDWIN COUNTY CORONER |
| 3,000 SF | BALDWIN COUNTY SHERIFF |
| 2,900 SF | COMMON SPACE |



What is Next????



Adding Forensic Services

- Documentation: X-rays, On-site Drug surveillance

Facilities

- Appropriate Cooler space for population
- Desk space for workers
- Clinic Space for case load

Improving product

- Faster results
- Faster re-unification with family

Reducing the burden to the Taxpayer

- Reducing the # of transports out of the County

Regional Concept for Southwest Alabama

- Share the cost of resources with other Community Partners
- Mutual Aid to neighboring Counties