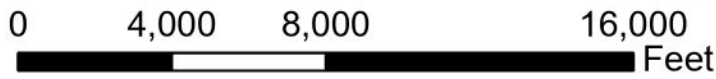
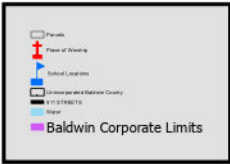
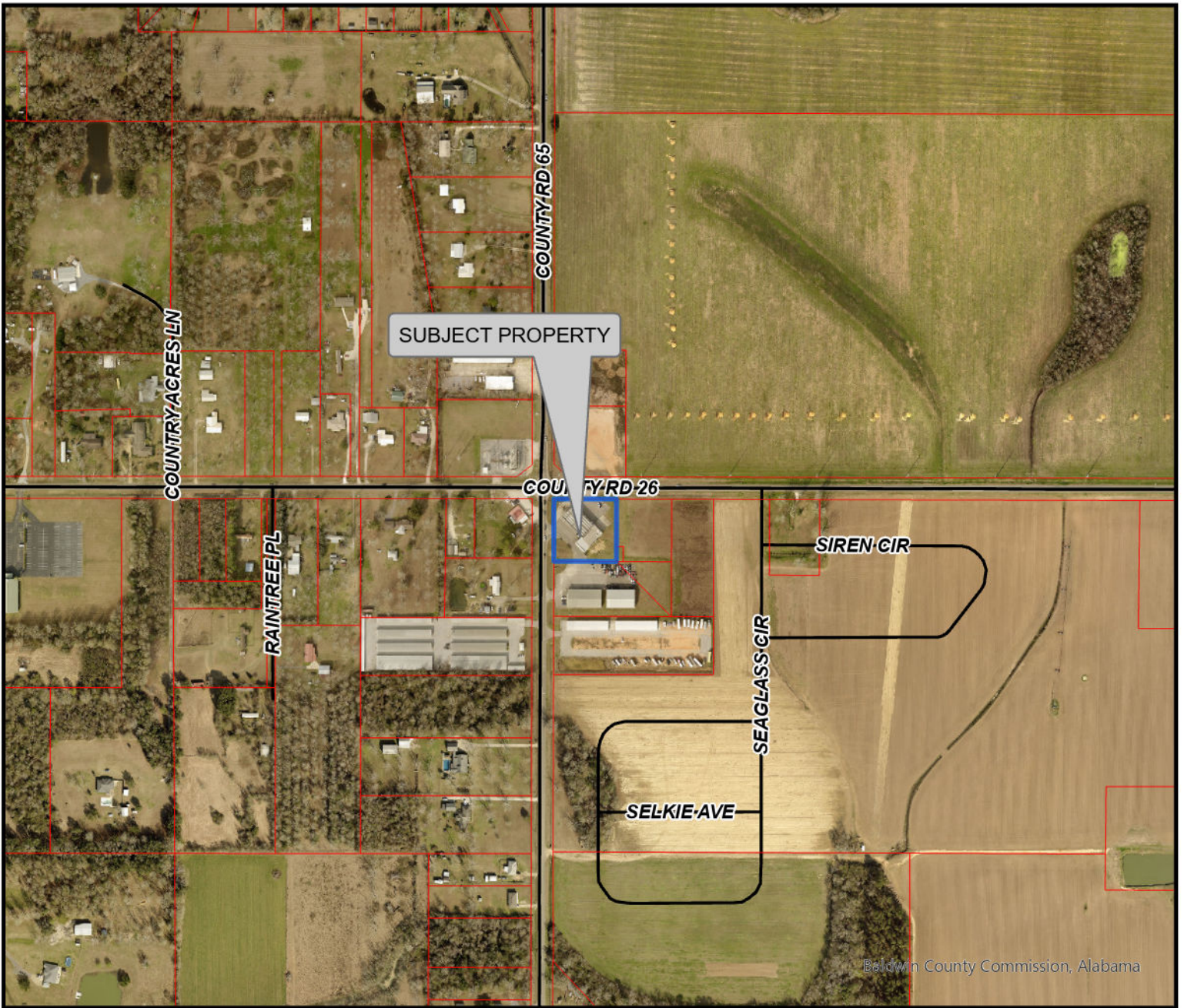


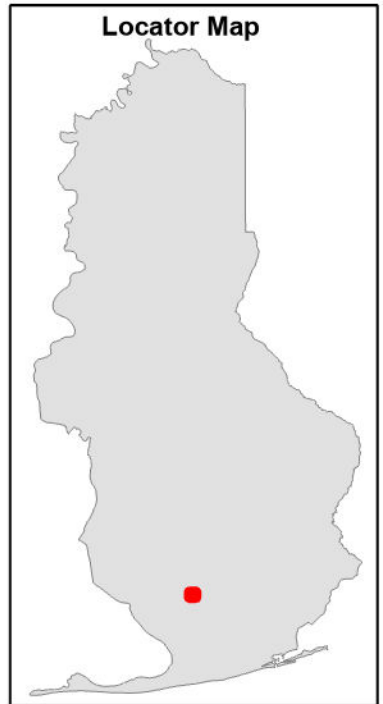
YOGIR LLC dba COUNTRY LIQUOR
11470 COUNTY RD 65, UNIT B
FOLEY, AL 36535
ABC LICENSE



The information contained in this representation of digital data distributed by the Baldwin County Commission's Planning and Zoning Department is derived from a variety of public and private sources and is considered to be dependable. However, the accuracy, completeness, and currency thereof are not guaranteed. The Baldwin County Commission makes no warranties, expressed or implied, as to the accuracy, completeness, currency, reliability, or suitability of information or data contained in or generated from the County Geographic Database for any particular purpose. Additionally, the Baldwin County Commission or any agent, servant, or employee thereof assume no liability associated with the use of this data, and assume no responsibility to maintain it in any matter or form. For more information concerning this map call 251.580.1655.



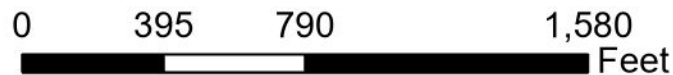
Baldwin County Commission, Alabama



YOGIR LLC dba COUNTRY LIQUOR
11470 COUNTY RD 65, UNIT B
FOLEY, AL 36535
ABC LICENSE



- Place of Worship
 - School Locations
 - 911 STREETS
 - Parcels
- ALBALD23-SID-3INCH.sid
 Red: Band_1
 Green: Band_2
 Blue: Band_3
 ALBALD22-SID-6INCH.sid



The information contained in this representation of digital data distributed by the Baldwin County Commission's Planning and Zoning Department is derived from a variety of public and private sources and is considered to be dependable. However, the accuracy, completeness, and currency thereof are not guaranteed. The Baldwin County Commission makes no warranties, expressed or implied, as to the accuracy, completeness, currency, reliability, or suitability of information or data contained in or generated from the County Geographic Database for any particular purpose. Additionally, the Baldwin County Commission or any agent, servant, or employee thereof assume no liability associated with the use of this data, and assume no responsibility to maintain it in any matter or form. For more information concerning this map call 251.580.1655.



Marathon

**CONSUMABLE HEMP PRODUCTS
LICENSE APPLIED FOR
Case Number**

LV-26001H

*For Information Contact
Baldwin County Commission
Administration Department
(251) 937-0264*

Mar 26, 2026 10:36:56 AM

30°23'31.10654"N 87°43'0.80746"W

156° SE

Baldwin County Code Enforcement