

STATE OF ALABAMA )

COUNTY OF BALDWIN )

**RESOLUTION # 2012-084  
OF THE  
BALDWIN COUNTY COMMISSION**

**EXERCISING THE AUTHORITY PROVIDED IN §11-3-11 (a) (1) OF THE CODE OF ALABAMA 1975, AND SECTION 6 OF ACT NO. 239 (1931), AS AMENDED, TO DIRECT, CONTROL AND MAINTAIN THE PROPERTY OF THE COUNTY, SPECIFICALLY PROPERTY KNOWN AS THE BALDWIN COUNTY EMERGENCY OPERATIONS CENTER.**

WHEREAS, §11-3-11 (a) (1) of the Code of Alabama 1975 provides, in pertinent part, that the Baldwin County Commission shall have authority to direct, control, and maintain the property of the county as it may deem expedient according to law, and in this direction and control it has the sole power to locate the courts in the rooms of the courthouse and to designate the rooms to be occupied by the officers entitled to rooms therein, including the circuit judge if resident in the county, and to change the location of the courts and the designation of the rooms for officers as it may deem best and most expedient, and this shall be done by order of the county commission entered upon the minutes of the county commission at a regular meeting of the county commission. In the event the courthouse is inadequate to supply office rooms for such officers, the county commission may lease such office rooms in a convenient location in the county site and pay the rental from the county fund; and

WHEREAS, further, Section 6 of Act No. 239 (1931), as amended, provides, in pertinent part, that the Baldwin County Commission shall have the duty, power, jurisdiction, authority and privilege to direct and control the property of Baldwin County, as it may deem expedient according to law, and in this direction and control it has the sole power to locate the courts in the rooms of the courthouse and to designate the rooms to be occupied by the different officers entitled to rooms therein, and to change the location of courts and designation of rooms for officers as it may deem best and most expedient; and this shall be done by order of the Commission entered upon its minutes at a regular term of the Commission.

COMES NOW, this honorable county governing body desiring, by this instrument, to provide updated office space assignments at the Baldwin County Emergency Operations Center located at 23100 McAuliffe Drive in Robertsedale, Alabama, as set forth hereinbelow; now therefore

BE IT RESOLVED AND ORDERED BY THE BALDWIN COUNTY COMMISSION, IN REGULAR SESSION ASSEMBLED, That, pursuant to the authority granted the Baldwin County Commission at §11-3-11 (a) (1) of the Code of Alabama 1975 and Section 6 of Act No. 239 (1931), as amended, as referenced herein and without limitation, the Baldwin County

Commission hereby, and by this instrument, designates the office space assignments at the **Baldwin County Emergency Operations Center** located at 23100 McAuliffe Drive in Robertsedale, Alabama, as follows:

**First Floor**

See Exhibit A hereto

**Second Floor**

See Exhibit B hereto

FURTHER, BE IT RESOLVED AND ORDERED, that this instrument, codified as *Resolution #2012-084 of the Baldwin County Commission*, be entered and spread upon the minutes of this August 7, 2012, regular meeting (term) of the Baldwin County Commission.

DONE, under the Seal of the County of Baldwin, at the County Seat in Bay Minette, Alabama, on this the 7<sup>th</sup> day of August, 2012.

  
Commissioner Robert E. James, Chairman

ATTEST

  
David A. Z. Brewer, County Administrator

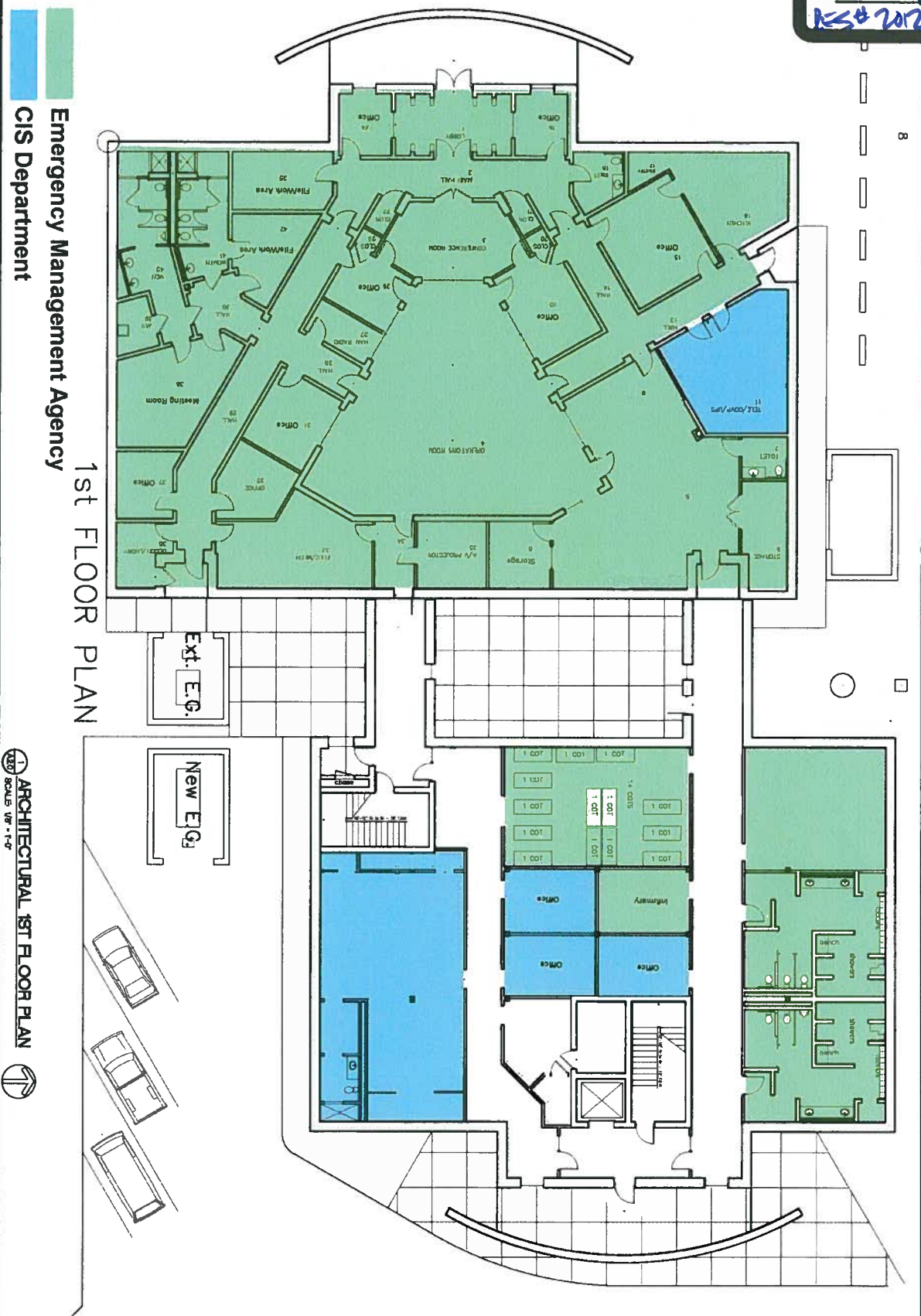


EXHIBIT

A

tabbles

180-202-084



<p>EMERGENCY OPERATIONS CENTER BUILDING ADDITION</p> <p>ROBERTSDALE, AL</p>		<p>GAULIN HUDSON ARCHITECTS, INC.</p> <p>ARCHITECTS</p> <p>LAND PLANNERS</p> <p>DESIGNERS</p> <p>180-202-084</p>	<p>DATE</p> <p>05 NOV 2006</p>	<p>PROJECT NO.</p> <p>0428</p>	<p>REVISIONS</p> <table border="1"> <tr> <th>NO.</th> <th>DATE</th> <th>APPR.</th> <th>REVISIONS</th> </tr> <tr> <td> </td> <td> </td> <td> </td> <td> </td> </tr> </table>	NO.	DATE	APPR.	REVISIONS				
NO.	DATE	APPR.	REVISIONS										

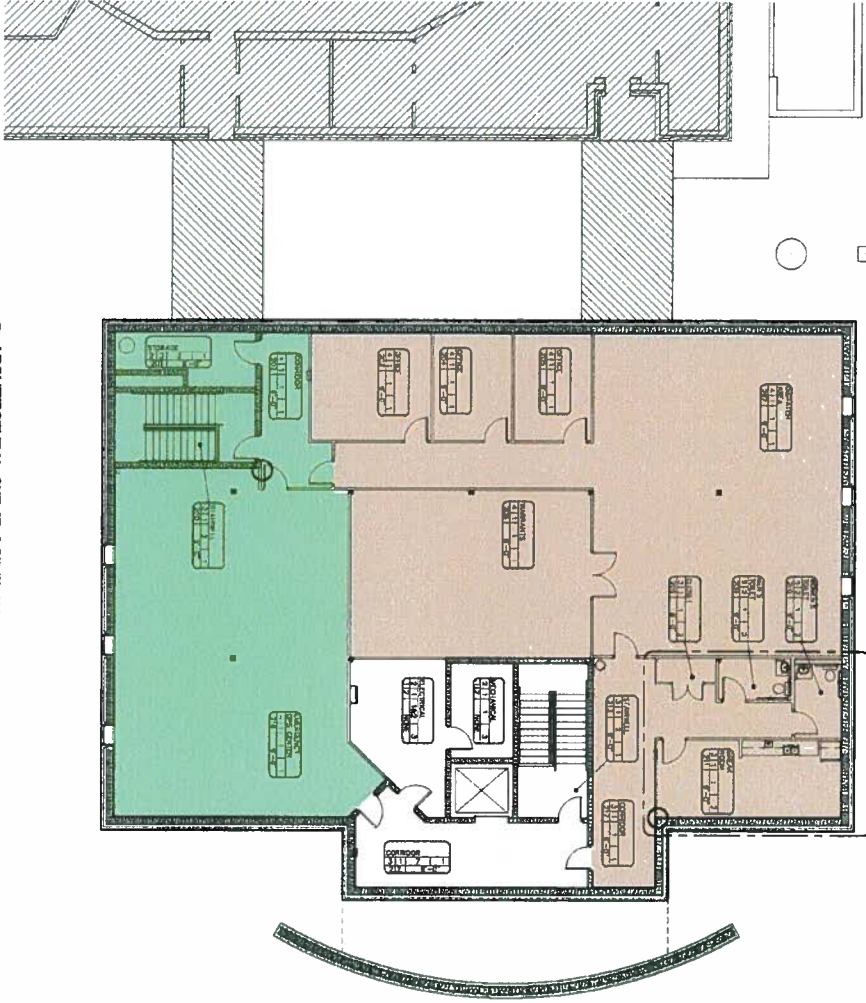
© 2003 GAULIN HUDSON ARCHITECTS, INC. DAPHNE, ALABAMA

EXHIBIT

B

180-02-084

as per



ARCHITECTURAL 2ND FLOOR PLAN  
SCALE: 1/8" = 1'-0"

Emergency Management Agency  
Sheriff's Office

ROOM FINISH			
TARGET			
FLOOR	BASE	WALL	CEILING
ROOM NO.	CEILING HEIGHT		

ROOM FINISH SCHEDULE			
FLOOR	BASE	WALL	CEILING
1	NOI USED	1" RUBBER-CORE	2" X 4" SPR. BR. (TYP.)
2	CEILING CONC. SLAB	2" X 4" SPR. BR. (TYP.)	2" X 4" SPR. BR. (TYP.)
3	NOI USED	NOI USED	NOI USED
4	CEILING CONC. SLAB	2" X 4" SPR. BR. (TYP.)	2" X 4" SPR. BR. (TYP.)
5	CEILING CONC. SLAB	2" X 4" SPR. BR. (TYP.)	2" X 4" SPR. BR. (TYP.)
6	CEILING CONC. SLAB	2" X 4" SPR. BR. (TYP.)	2" X 4" SPR. BR. (TYP.)
7	CEILING CONC. SLAB	2" X 4" SPR. BR. (TYP.)	2" X 4" SPR. BR. (TYP.)
8	CEILING CONC. SLAB	2" X 4" SPR. BR. (TYP.)	2" X 4" SPR. BR. (TYP.)
9	CEILING CONC. SLAB	2" X 4" SPR. BR. (TYP.)	2" X 4" SPR. BR. (TYP.)

PROJECT NO. 06 NOV 2006

PROJECT NO. 0428

DATE 06 NOV 2006

PROJECT NO. 0428

DATE 06 NOV 2006

PROJECT NO. 0428

DATE 06 NOV 2006

EMERGENCY OPERATIONS CENTER BUILDING ADDITION  
ROBERTSDALE, AL

ARCH. 2ND FLOOR PLAN

GAULIN HUDSON ARCHITECTS, INC.  
2003 GAULIN HUDSON ARCHITECTS, INC.  
DAPHNE, ALABAMA

GAULIN HUDSON ARCHITECTS, INC.  
2003 GAULIN HUDSON ARCHITECTS, INC.  
DAPHNE, ALABAMA

GAULIN HUDSON ARCHITECTS, INC.  
2003 GAULIN HUDSON ARCHITECTS, INC.  
DAPHNE, ALABAMA

GAULIN HUDSON ARCHITECTS, INC.  
2003 GAULIN HUDSON ARCHITECTS, INC.  
DAPHNE, ALABAMA