

STATE OF ALABAMA)

COUNTY OF BALDWIN)

**RESOLUTION # 2015-007
OF THE
BALDWIN COUNTY COMMISSION**

EXERCISING THE AUTHORITY PROVIDED IN §11-3-11 (a) (1) OF THE CODE OF ALABAMA 1975, AND SECTION 6 OF ACT NO. 239 (1931), AS AMENDED, TO AUTHORIZE, BY ORDER AS ENTERED UPON THE MINUTES OF THE OCTOBER 7, 2014, REGULAR MEETING, THE LOCATION OF THE COURTS IN THE ROOMS OF THE BALDWIN COUNTY (FAIRHOPE) SATELLITE COURTHOUSE LOCATED IN THE CITY OF FAIRHOPE, ALABAMA, AND TO DESIGNATE THE ROOMS TO BE OCCUPIED BY THE DIFFERENT OFFICES LOCATED THEREIN; FURTHER, TO AUTHORIZE SPACE ALLOCATIONS AND OFFICES APPLICABLE TO THE BALDWIN COUNTY (FAIRHOPE) SATELLITE COURTHOUSE CAMPUS.

WHEREAS, §11-3-11 (a) (1) of the Code of Alabama 1975 provides, in pertinent part, that the Baldwin County Commission shall have authority to direct, control and maintain the property of the county as it may deem expedient according to law, and in this direction and control it has the sole power to locate the courts in the rooms of the courthouse and to designate the rooms to be occupied by the officers entitled to rooms therein, including the circuit judge if resident in the county, and to change the location of the courts and the designation of the rooms for officers as it may deem best and most expedient, and this shall be done by order of the county commission entered upon the minutes of the county commission at a regular meeting of the county commission; and

WHEREAS, further, Section 6 of Act No. 239 (1931), as amended, provides, in pertinent part, that the Baldwin County Commission shall have the duty, power, jurisdiction, authority and privilege to direct and control the property of Baldwin County, as it may deem expedient according to law, and in this direction and control it has the sole power to locate the courts in the rooms of the courthouse and to designate the rooms to be occupied by the different officers entitled to rooms therein, and to change the location of courts and designation of rooms for officers as it may deem best and most expedient; and this shall be done by order of the Commission entered upon its minutes at a regular term of the Commission.

COMES NOW, this honorable county governing body desiring, by this instrument, to update the designation of the location of the courts in the rooms of the Baldwin County (Fairhope) Satellite Courthouse; further, to update the designation of the rooms to be occupied by the offices located therein pursuant to the floor plan rendering of said Baldwin County (Fairhope) Satellite Courthouse and; further, to update the designation of the rooms to be occupied by the offices located in the Baldwin County (Fairhope) Satellite Courthouse Campus [i.e. adjoining the Baldwin County (Fairhope) Satellite Courthouse proper]; now therefore

BE IT RESOLVED AND ORDERED BY THE BALDWIN COUNTY COMMISSION, IN REGULAR SESSION ASSEMBLED, That, pursuant to the authority granted the Baldwin

County Commission in §11-3-11 (a) (1) of the Code of Alabama 1975 and Section 6 of Act No. 239 (1931), as amended, as referenced herein and without limitation, the Baldwin County Commission hereby, and by this instrument, deems it best and most expedient to locate the courts in the rooms of the **Baldwin County (Fairhope) Satellite Courthouse and Campus** as located 1100 Fairhope Avenue in Fairhope, Alabama, and designate the rooms to be occupied by the offices located therein as follows:

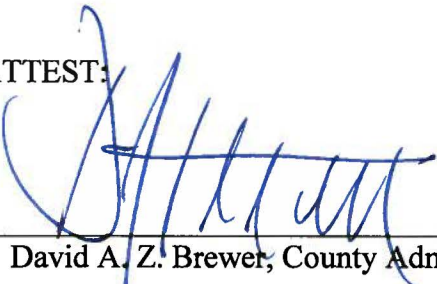
See **Exhibit A** hereto

FURTHER, BE IT RESOLVED AND ORDERED, that this instrument, codified as *Resolution #2015-007 of the Baldwin County Commission*, be entered and spread upon the minutes of this October 7, 2014, regular meeting (term) of the Baldwin County Commission.

FURTHER, BE IT RESOLVED AND ORDERED, that *Resolution #2012-028* (adopted at the February 7, 2012, regular meeting) is expressly repealed.

DONE, under the Seal of the County of Baldwin, at the County Seat in Bay Minette, Alabama, on this the 7th day of October, 2014.

ATTEST:

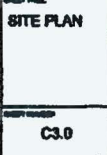


David A. Z. Brewer, County Administrator

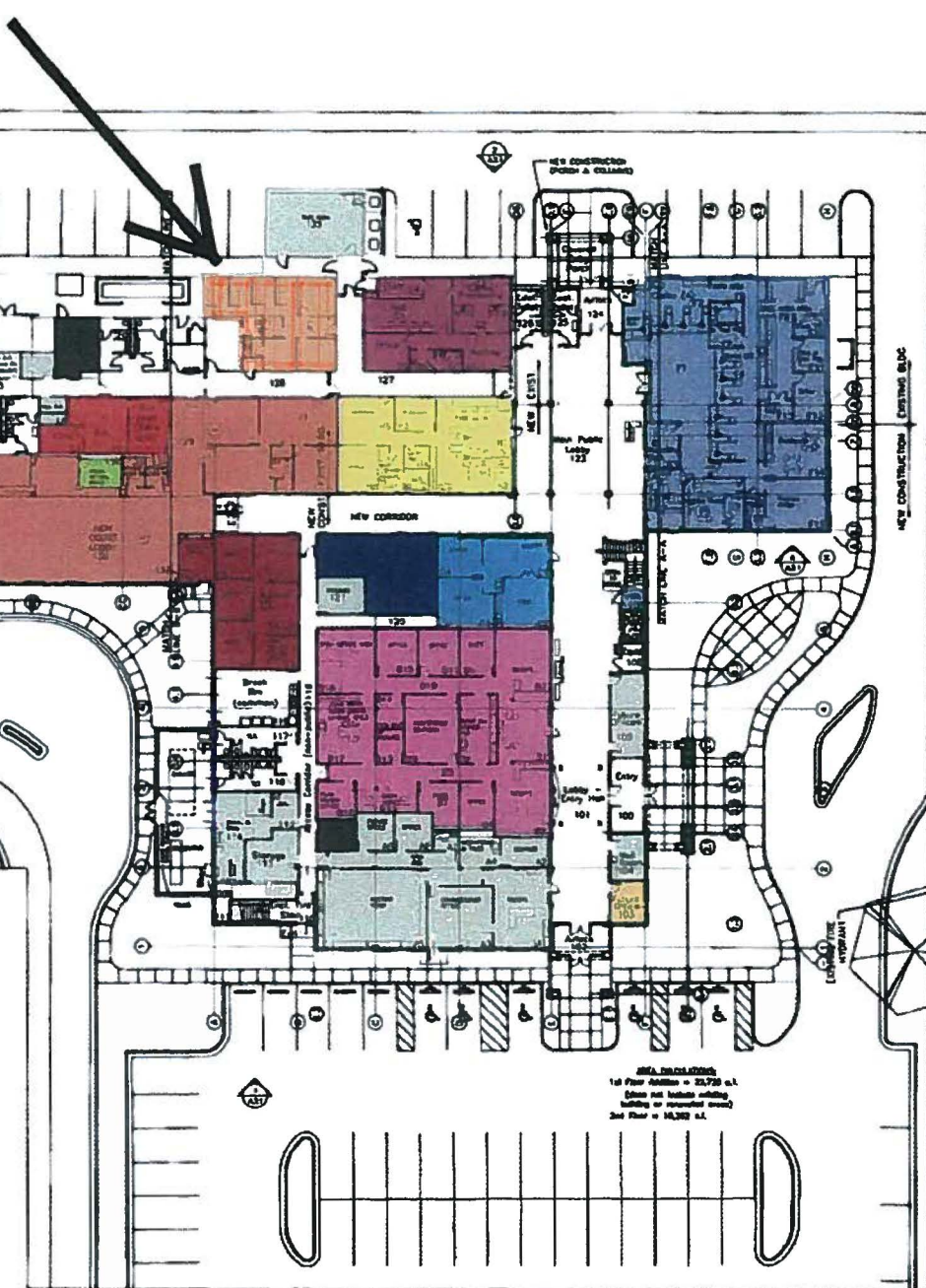


Commissioner Charles F. Gruber, Chairman





ROOM FINISH SCHEDULE			
FLOOR	BASE	WALL	CEILING
1. COURT & ENTR.	1. POLISHED CONCRETE	2. 1/2" GYP BOARD	2. 1/2" GYP BOARD
2. COURT & ENTR.	2. POLISHED CONCRETE	2. 1/2" GYP BOARD	2. 1/2" GYP BOARD
3. COURT & ENTR.	3. POLISHED CONCRETE	2. 1/2" GYP BOARD	2. 1/2" GYP BOARD
4. COURT & ENTR.	4. POLISHED CONCRETE	2. 1/2" GYP BOARD	2. 1/2" GYP BOARD
5. COURT & ENTR.	5. POLISHED CONCRETE	2. 1/2" GYP BOARD	2. 1/2" GYP BOARD
6. COURT & ENTR.	6. POLISHED CONCRETE	2. 1/2" GYP BOARD	2. 1/2" GYP BOARD
7. COURT & ENTR.	7. POLISHED CONCRETE	2. 1/2" GYP BOARD	2. 1/2" GYP BOARD
8. COURT & ENTR.	8. POLISHED CONCRETE	2. 1/2" GYP BOARD	2. 1/2" GYP BOARD
9. COURT & ENTR.	9. POLISHED CONCRETE	2. 1/2" GYP BOARD	2. 1/2" GYP BOARD
10. COURT & ENTR.	10. POLISHED CONCRETE	2. 1/2" GYP BOARD	2. 1/2" GYP BOARD
11. COURT & ENTR.	11. POLISHED CONCRETE	2. 1/2" GYP BOARD	2. 1/2" GYP BOARD
12. COURT & ENTR.	12. POLISHED CONCRETE	2. 1/2" GYP BOARD	2. 1/2" GYP BOARD
13. COURT & ENTR.	13. POLISHED CONCRETE	2. 1/2" GYP BOARD	2. 1/2" GYP BOARD
14. COURT & ENTR.	14. POLISHED CONCRETE	2. 1/2" GYP BOARD	2. 1/2" GYP BOARD
15. COURT & ENTR.	15. POLISHED CONCRETE	2. 1/2" GYP BOARD	2. 1/2" GYP BOARD
16. COURT & ENTR.	16. POLISHED CONCRETE	2. 1/2" GYP BOARD	2. 1/2" GYP BOARD
17. COURT & ENTR.	17. POLISHED CONCRETE	2. 1/2" GYP BOARD	2. 1/2" GYP BOARD
18. COURT & ENTR.	18. POLISHED CONCRETE	2. 1/2" GYP BOARD	2. 1/2" GYP BOARD
19. COURT & ENTR.	19. POLISHED CONCRETE	2. 1/2" GYP BOARD	2. 1/2" GYP BOARD
20. COURT & ENTR.	20. POLISHED CONCRETE	2. 1/2" GYP BOARD	2. 1/2" GYP BOARD



1 OVERALL 1ST FLOOR PLAN
SCALE: 1/8" = 1'-0"

- Commission Office
- CRATS Department
- Building Inspection Department
- CIS Department
- Board of Registrars
- Legislative Delegation
- Probate Judge's Office
- Revenue Commissioner's Office
- Sherriff's Office
- 28th Judicial Circuit (Judge and Circuit Clerk)
- 28th Judicial Circuit (District Attorney)
- Court Referral Office
- Alabama Dept Of Public Safety (Driver's License Division)

STATE OF ALABAMA
JUDICIAL BRANCH

DESIGNED TO EARN THE ENERGY STAR

100% ENERGY EFFICIENT

Architect: HATCH MOTT MACDONALD

Address: 1000 17th Street, Suite 1000, Birmingham, AL 35203

Phone: (205) 261-1000

Commission Office

CRATS Department

Building Inspection Department

CIS Department

Board of Registrars

Legislative Delegation

Probate Judge's Office

Revenue Commissioner's Office

Sherriff's Office

28th Judicial Circuit (Judge and Circuit Clerk)

28th Judicial Circuit (District Attorney)

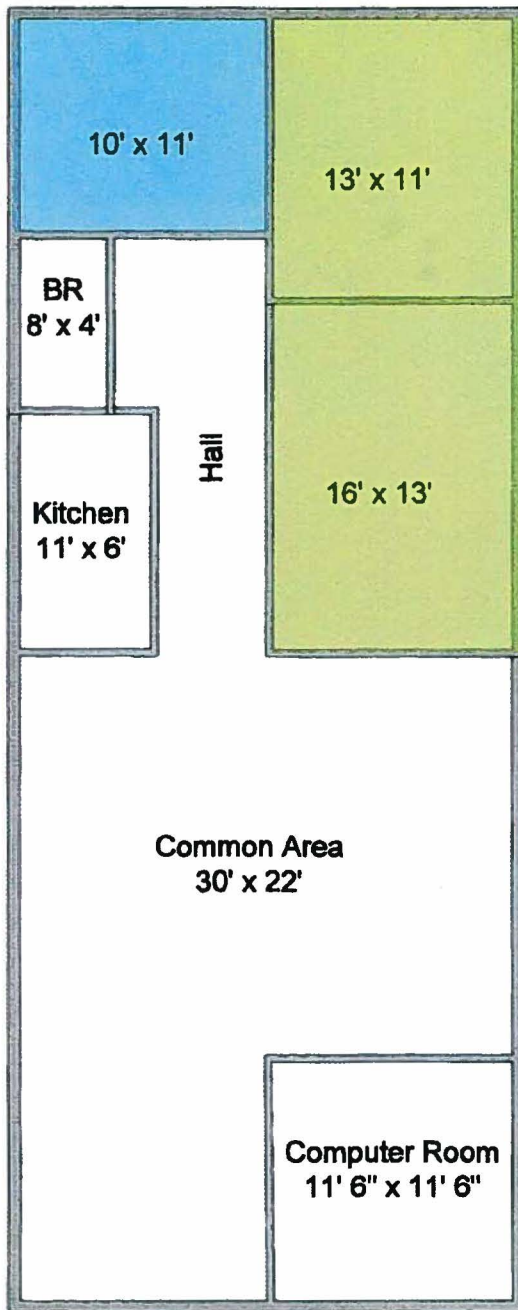
Court Referral Office

Alabama Dept Of Public Safety (Driver's License Division)

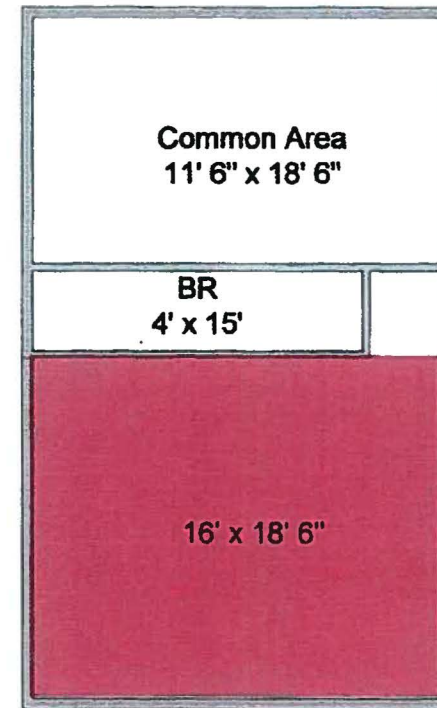
ADDITIONS AND RENOVATIONS TO
BALDWIN COUNTY
SATELLITE COURTHOUSE
Fairhope, Alabama

A20





Downstairs



Upstairs

- Vacant
- Vacant
- Vacant

Springer House
20609 Bishop Road
Fairhope, Alabama