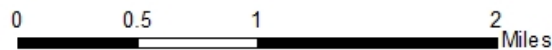


BALDWIN COUNTY COMMISSION
PLANNING AND ZONING DEPARTMENT



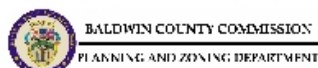
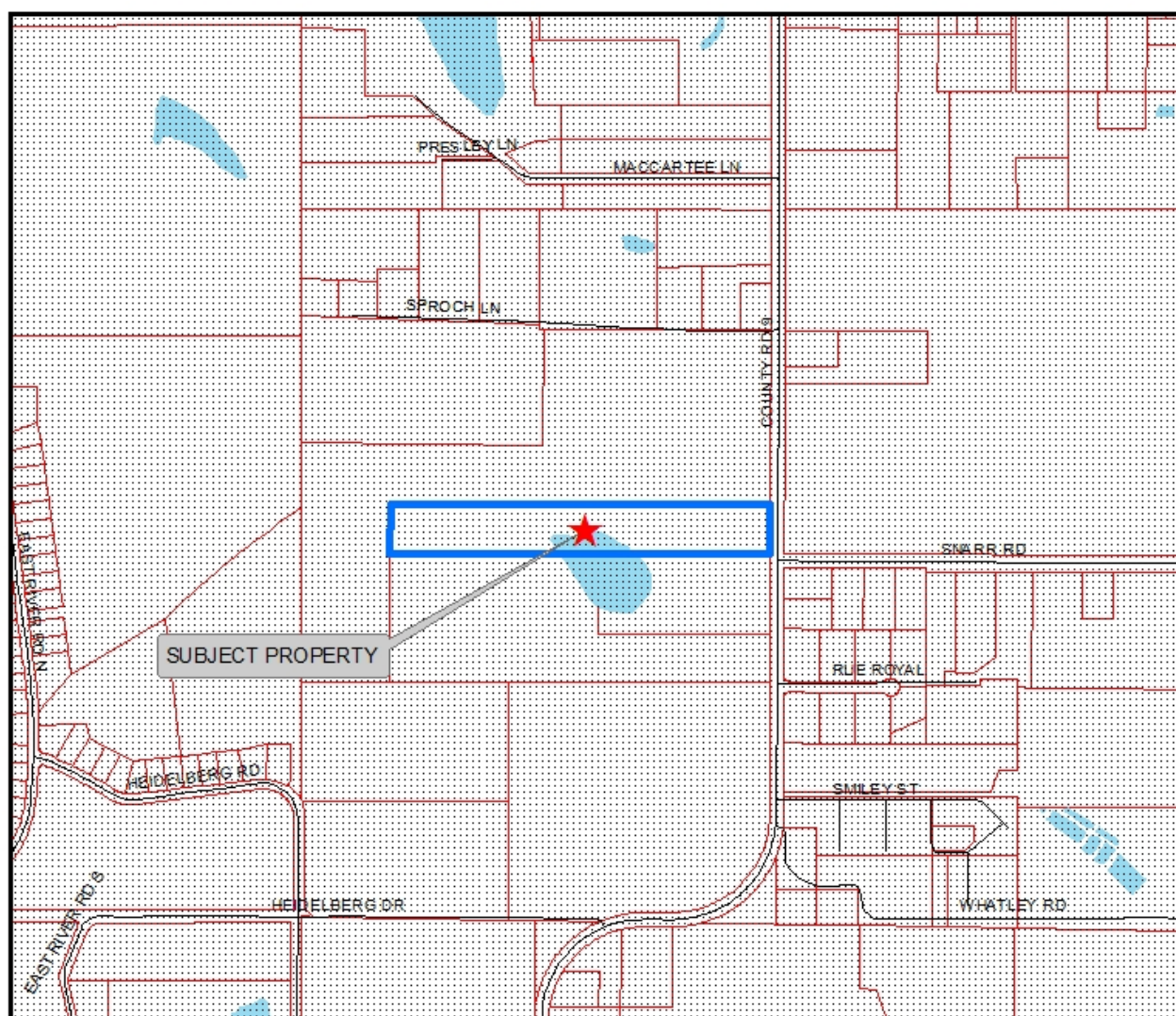
**BILL ES, LLC dba OLD 27 GRILL (ONE TIME
SPECIAL EVENT - BALDWIN HUMANE
SOCIETY HOUND DOG MUSIC FESTIVAL)
19437 COUNTY RD 9, SILVERHILL, AL 36576
ABC LICENSE**



Locator Map



The information contained in this representation of digital data distributed by the Baldwin County Commission's Planning and Zoning Department is derived from a variety of public and private sources and is considered to be dependable. However, the accuracy, completeness, and currency thereof are not guaranteed. The Baldwin County Commission makes no warranties, expressed or implied, as to the accuracy, completeness, currency, reliability, or suitability of information or data contained in or generated from the County Geographic Database for any particular purpose. Additionally, the Baldwin County Commission or any agent, servant, or employee thereof assume no liability associated with the use of this data, and assume no responsibility to maintain it in any matter or form. For more information concerning this map call 251.350.1855.

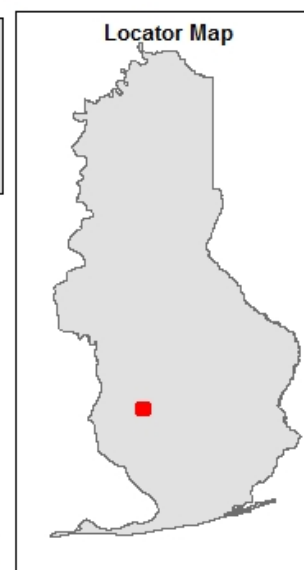


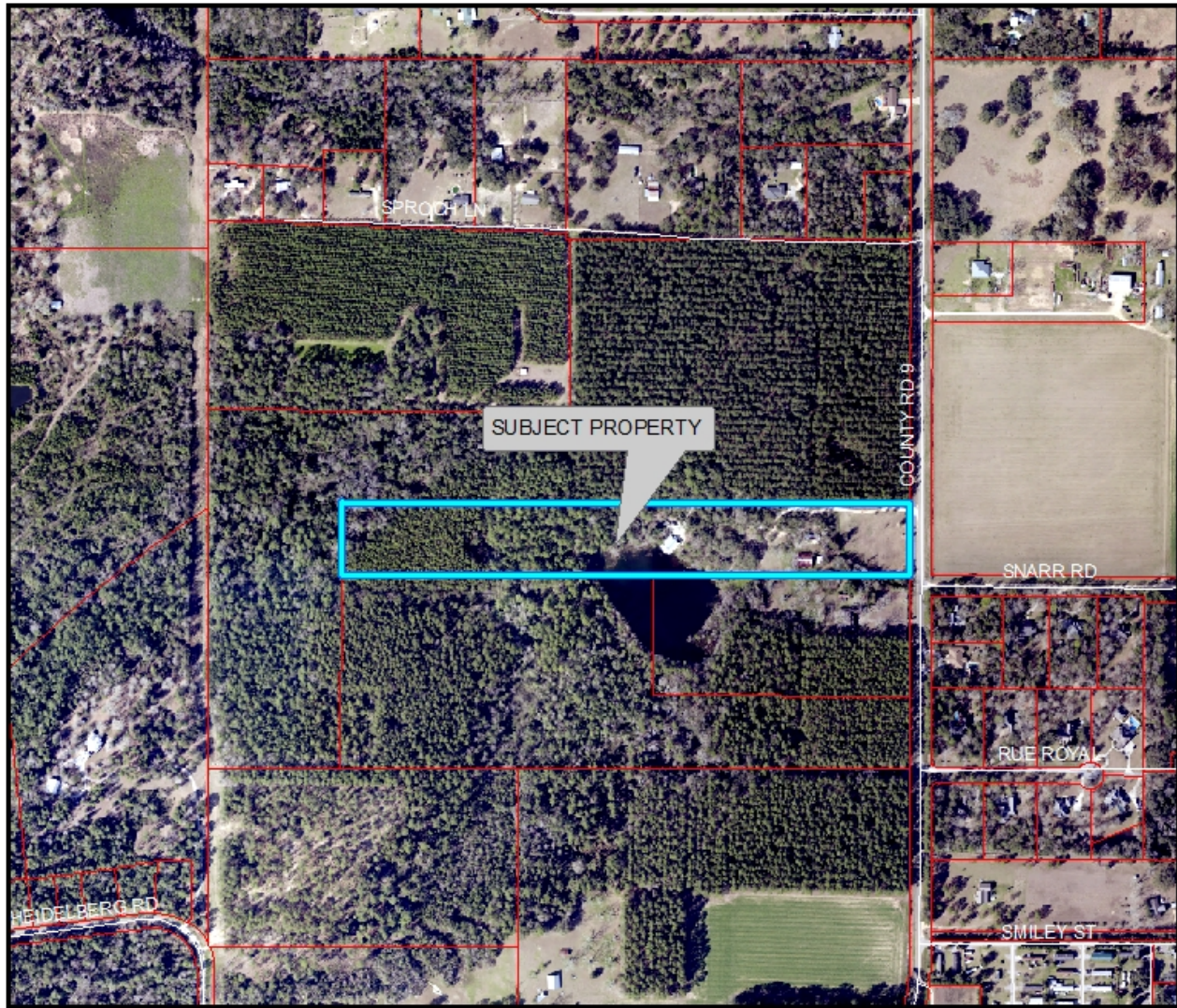
**BILL ES, LLC dba OLD 27 GRILL (ONE TIME
SPECIAL EVENT - BALDWIN HUMANE
SOCIETY HOUND DOG MUSIC FESTIVAL)
19437 COUNTY RD 9, SILVERHILL, AL 36576
ABC LICENSE**

0 500 1,000 2,000
Feet

Subject Property	Rural/Agricultural District (RA)	Residential Manufactured Housing Park District (RMH)
Place of Worship	Conservation Resource District (CR)	Marine Recreation District (MR)
School Locations	Residential Single Family Estate District (RSF-E)	Outdoor Recreation District (OR)
Unincorporated Baldwin County	Residential Single Family District (RSF-1)	Tourist Resort District (TR)
Roads	Residential Single Family District (RSF-2)	Professional Business District (B-1)
Water	Residential Single Family District (RSF-3)	Neighborhood Business District (B-2)
City Limits	Residential Single Family District (RSF-4)	General Business District (B-3)
Parcels	Residential Two Family District (RTP-4)	Major Commercial District (B-4)
Rural District (RR)	Residential Single Family District (RSF-5)	Light Industrial District (M-1)
	Residential Two Family District (RTP-5)	General Industrial District (M-2)
	Residential Multiple Family District (RMF-5)	

The information contained in this representation of digital data distributed by the Baldwin County Commission's Planning and Zoning Department is derived from a variety of public and private sources and is considered to be dependable. However, the accuracy, completeness, and currency thereof are not guaranteed. The Baldwin County Commission makes no warranties, expressed or implied, as to the accuracy, completeness, currency, reliability, or suitability of information or data contained in or generated from the County Geographic Database for any particular purpose. Additionally, the Baldwin County Commission or any agent, servant, or employee thereof assume no liability associated with the use of this data, and assume no responsibility to maintain it in any manner or form. For more information concerning this map call 251-350-1955.





BALDWIN COUNTY COMMISSION
PLANNING AND ZONING DEPARTMENT

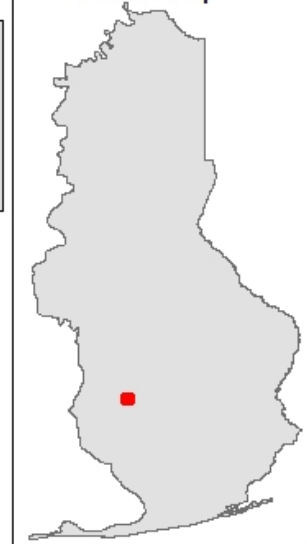


	Place of Worship
	School Locations
	Roads
	Subject_Property
	Parcels

**BILL ES, LLC dba OLD 27 GRILL (ONE TIME
SPECIAL EVENT - BALDWIN HUMANE
SOCIETY HOUND DOG MUSIC FESTIVAL)
19437 COUNTY RD 9, SILVERHILL, AL 36576
ABC LICENSE**

0 375 750 1,500
Feet

Locator Map



The information contained in this representation of digital data distributed by the Baldwin County Commission's Planning and Zoning Department is derived from a variety of public and private sources and is considered to be dependable. However, the accuracy, completeness, and currency thereof are not guaranteed. The Baldwin County Commission makes no warranties, expressed or implied, as to the accuracy, completeness, currency, reliability, or suitability of information or data contained in or generated from the County Geographic Database for any particular purpose. Additionally, the Baldwin County Commission or any agent, servant, or employee thereof assume no liability associated with the use of this data, and assume no responsibility to maintain it in any matter or form. For more information concerning this map call 251.550.1655.