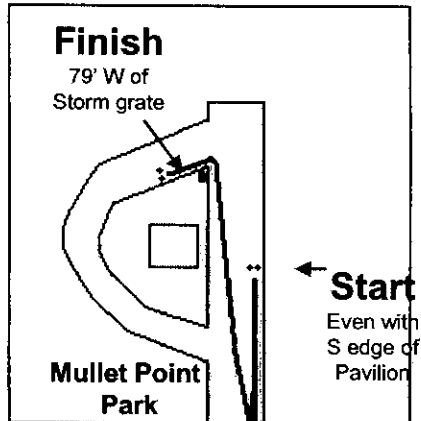


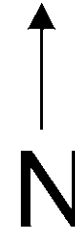
Holiday Half Marathon

Point Clear, Alabama



Splits: Marked with one washer and green paint.

- Mile 1: Near 12483, 24' S of pole 5
- Mile 2: Near 11831, 10' N of fire plug
- Mile 3: Near 11237, 57' N of pole 25
- Mile 4: Near 10727, 64' N of pole 65
- Mile 5: Near 10455, 30' N of pole 49
- Mile 6: Near 10620, 66' N of fire plug
- Mile 7: 55' N of pole 107
- Mile 8: 93' N of pole 107
- Mile 9: Near 10697, 28' S of pole 61
- Mile 10: Near 11185, 72' S of pole 23
- Mile 11: Near 11773, 12' N of pole 15
- Mile 12: Near 12451, 7' N of pole 21
- Mile 13: Near 13095, opposite lamp post



Mile 13

Mile 12

Mile 1

Mile 11

Mile 2

County Road 1

Mile 3

Mile 10

Turn Around 2

Just S of bridge
75' N of pole 65
81' S of pole 60

Mile 8

Mile 7

County Road 27

Turn Around 1

In Pelican Point parking lot
37' W of Weeks Bay sign
91' E of large concrete pole

Mile 9

Mile 6

Mile 4

Mile 5

Start, Finish, and Turn-arounds marked with washers and green paint

Measured by Jon Bowie (Daphne, AL 251-209-0887)

jbbowie@gmail.com

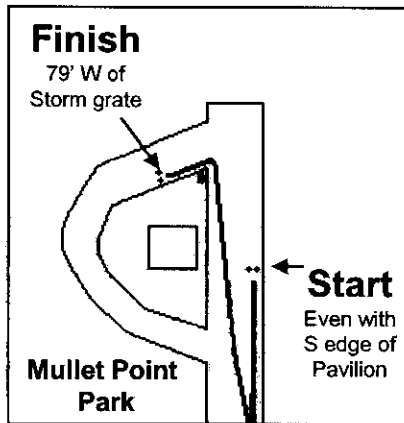
07 November 2010

Race contact: Port City Pacers 251-473-7223

No Diagrams to Scale

Holiday 8K

Point Clear, Alabama



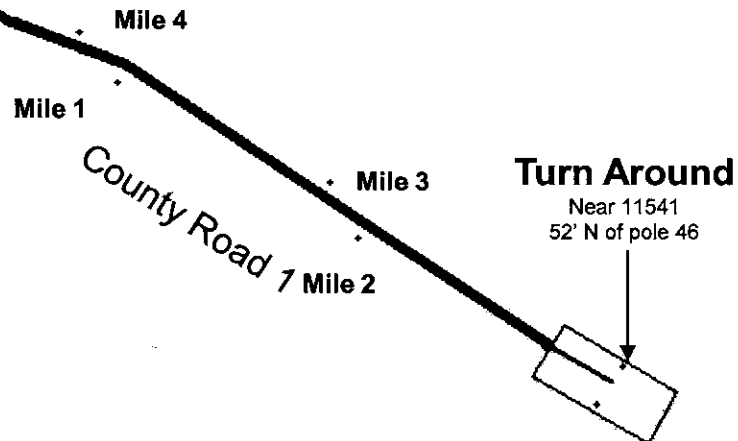
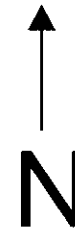
Splits: Marked with one washer and green paint.

Mile 1: Near 12483, 24' S of pole 5

Mile 2: Near 11831, 10' N of fire plug

Mile 3: Near 11861, 16' N of pole 105

Mile 4: Near 12501, 39' N of pole 14



Start, Finish, and Turn-around marked with washers and green paint

Measured by Jon Bowie (Daphne, AL 251-209-0887)

jnbowie@gmail.com

07 November 2010

Race contact: Port City Pacers 251-473-7223

No Diagrams to Scale