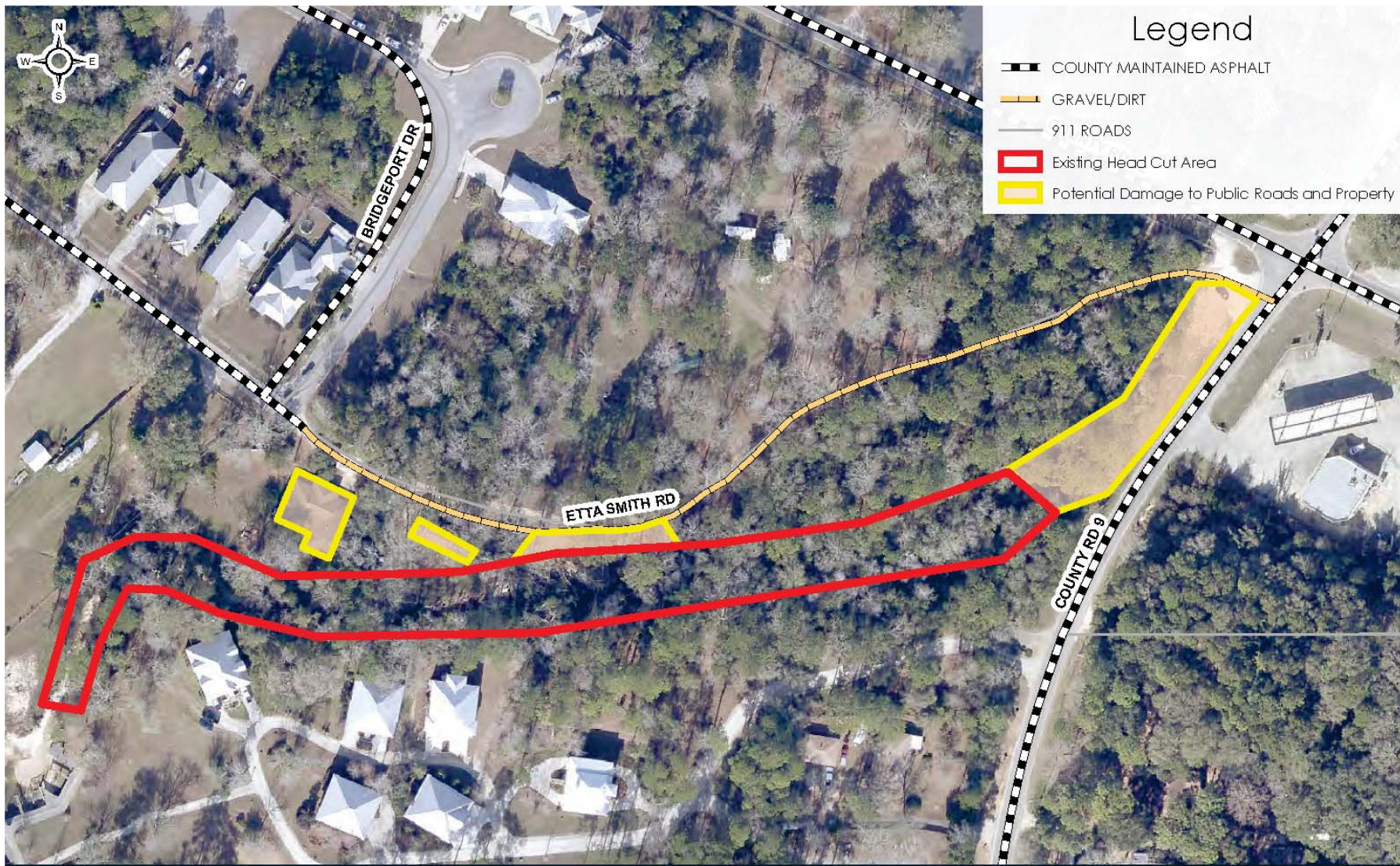


**GN1 – Emergency Watershed
Protection (EWP) Funding
for Damage to Watersheds
Resulting from
Tropical Storm Gordon**





ETTA SMITH ROAD 14' OF HEAD CUT



ETTA SMITH ROAD 14' OF HEAD CUT



Baldwin County
Highway Department 2019

Turberville Lane Watershed Erosion Issues

0 0.15 Miles





TURBERVILLE LANE 16' OF HEAD CUT AT ROAD



TURBERVILLE LANE 16' + OF HEAD CUT



TURBERVILLE LANE 25' OF HEAD CUT