

Proposed start of cleared path

Rock Creek Subdivision stop light

Power line road picture location

Esri USA Geocoder

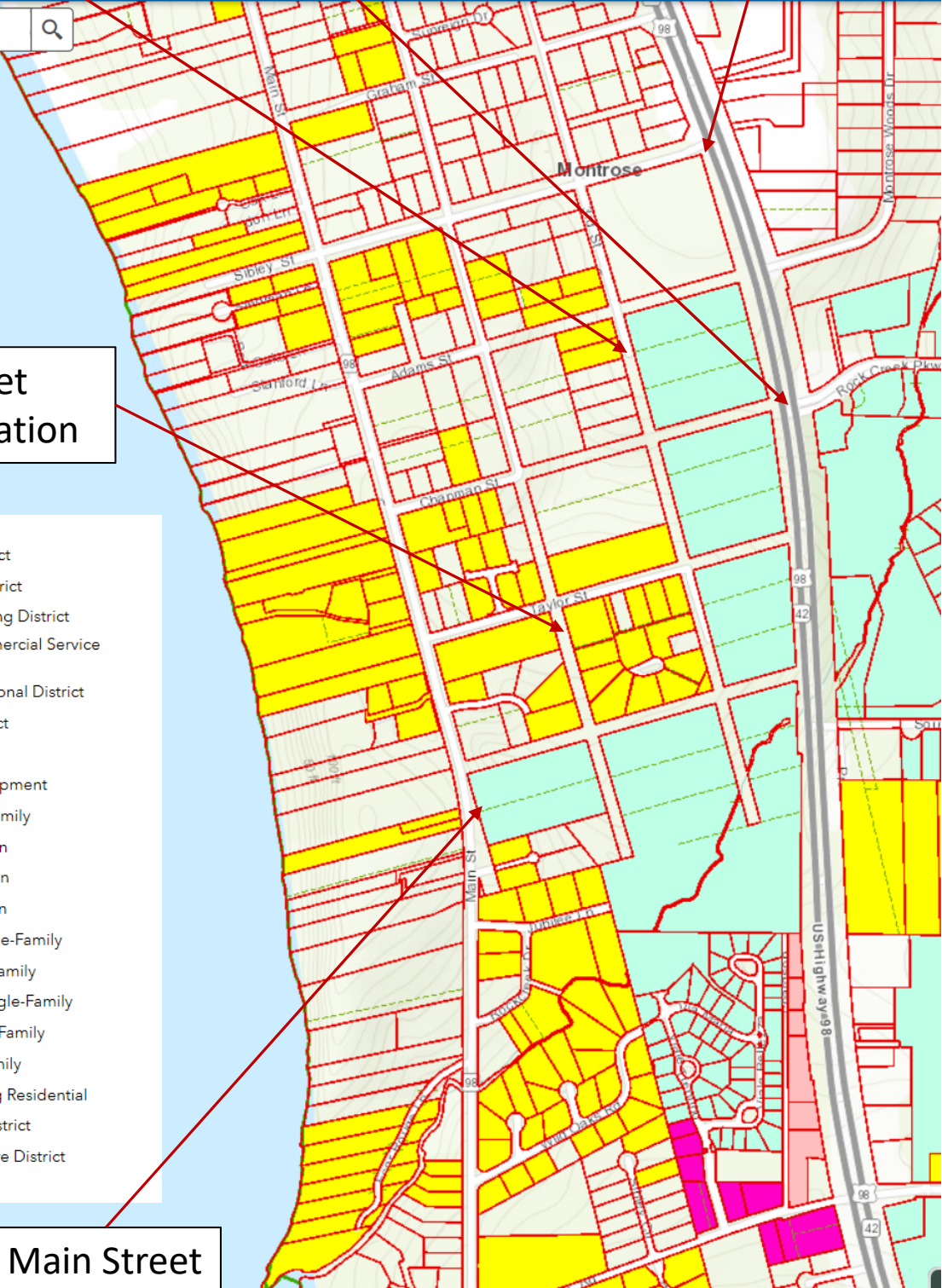


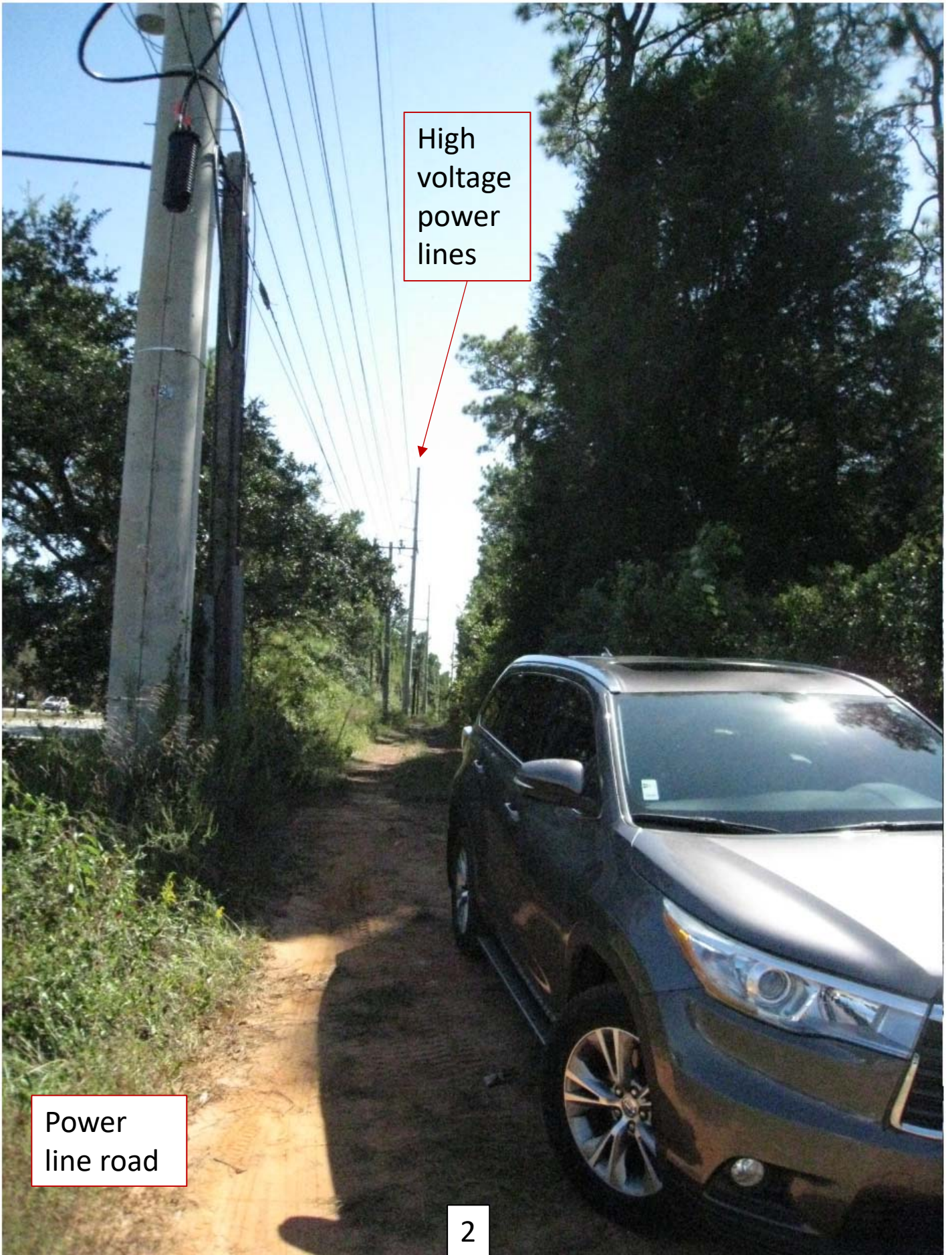
Taylor Street picture location

- Zoning
- B-1 - Local Shopping District
 - B-2 - General Business District
 - B-3a - Tourist Resort Lodging District
 - B-3b - Tourist Resort Commercial Service District
 - B-4 - Business and Professional District
 - M-1 - Light Industrial District
 - P-1 - Parking
 - ★ PUD - Planned Unit Development
 - R-1 - Low Density Single-Family
 - R1(a) - Residential Uncertain
 - R1(b) - Residential Uncertain
 - R1(c) - Residential Uncertain
 - R-2 - Medium Density Single-Family
 - R-3 - High Density Single-Family
 - R-3PGH - Patio/Garden Single-Family
 - R-3TH - Townhouse Single Family
 - R-4 - Low Density Multi-Family
 - R-5 - High Density Dwelling Residential
 - R-6 - Mobile Home Park District
 - R-A - Residential/Agriculture District
 - TR - Tourist Resort

300 600ft
885 30.571 Degrees

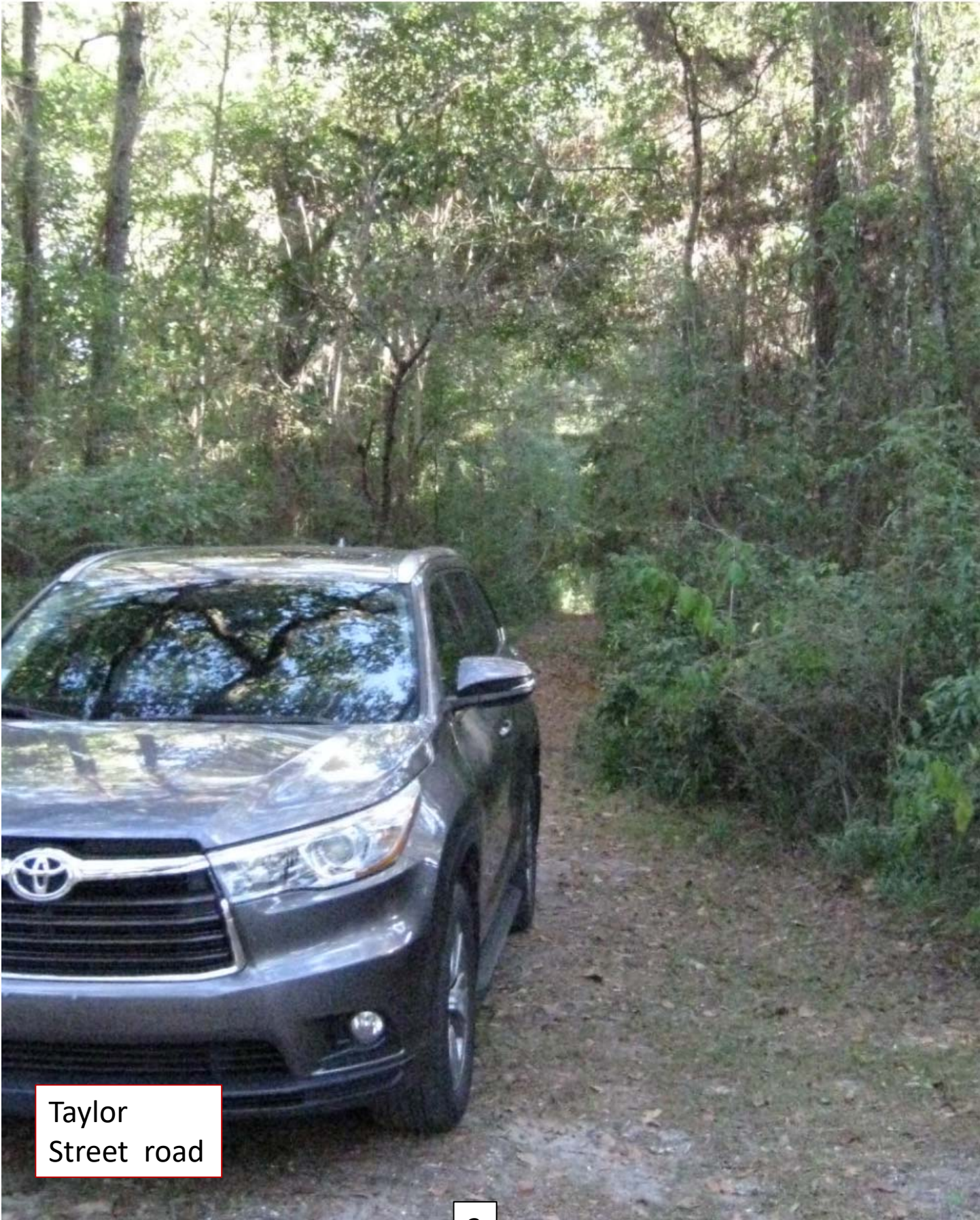
Main Street location



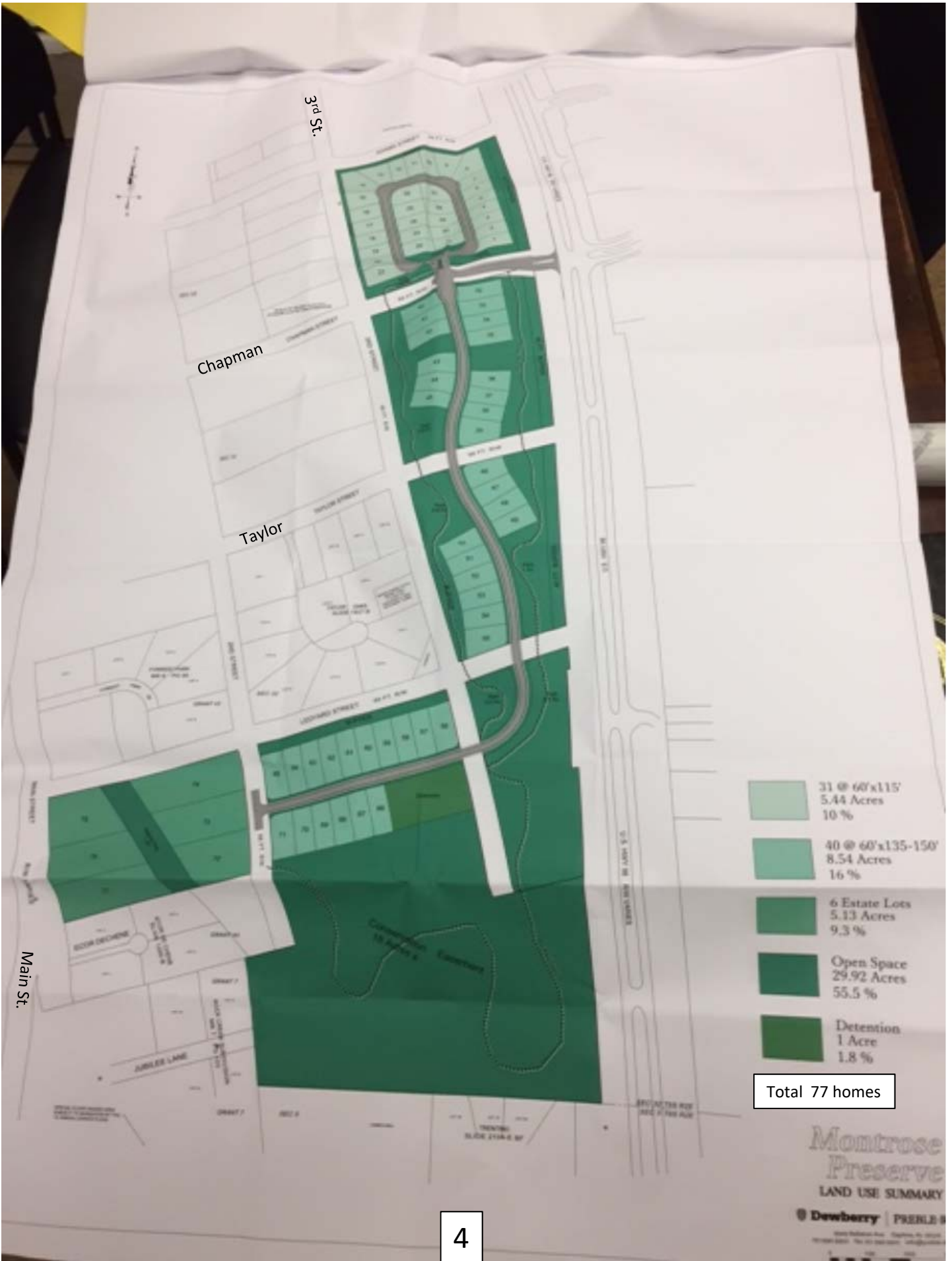


High
voltage
power
lines

Power
line road



Taylor
Street road



Total 77 homes