

BALDWIN COUNTY COMMISSION
PLANNING AND ZONING DEPARTMENT



**TRIPLE B CONVENIENCE STORE, INC dba
TRIPLE B #3
10930 COUNTY RD 64, DAPHNE, AL 36526
ABC LICENSE**

0 450 900 1,800
Feet


| | | |
|-------------------------------|---|--|
| Place of Worship | Rural Agricultural District (RA) | Residential Manufactured Housing Park District (RMH) |
| School Locations | Conservation Resource District (CR) | Marine Recreation District (MR) |
| Unincorporated Baldwin County | Residential Single Family Estate District (RSF-E) | Outdoor Recreation District (OR) |
| Roads | Residential Single Family District (RSF-1) | Tourist Resort District (TR) |
| Water | Residential Single Family District (RSF-2) | Professional Business District (B-1) |
| City Limits | Residential Single Family District (RSF-3) | Neighborhood Business District (B-2) |
| Parcels | Residential Single Family District (RSF-4) | General Business District (B-3) |
| Rural District (RR) | Residential Two Family District (RTF-4) | Major Commercial District (B-4) |
| | Residential Single Family District (RSF-6) | Light Industrial District (M-1) |
| | Residential Two Family District (RTF-6) | General Industrial District (M-2) |
| | Residential Multiple Family District (RMF-6) | |


Locator Map

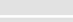


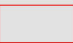
The information contained in this representation of digital data distributed by the Baldwin County Commission's Planning and Zoning Department is derived from a variety of public and private sources and is considered to be dependable. However, the accuracy, completeness, and currency thereof are not guaranteed. The Baldwin County Commission makes no warranties, expressed or implied, as to the accuracy, completeness, currency, reliability, or suitability of information or data contained in or generated from the County Geographic Database for any particular purpose. Additionally, the Baldwin County Commission or any agent, servant, or employee thereof assume no liability associated with the use of this data, and assume no responsibility to maintain it in any matter or form. For more information concerning this map call 251.580.1655.



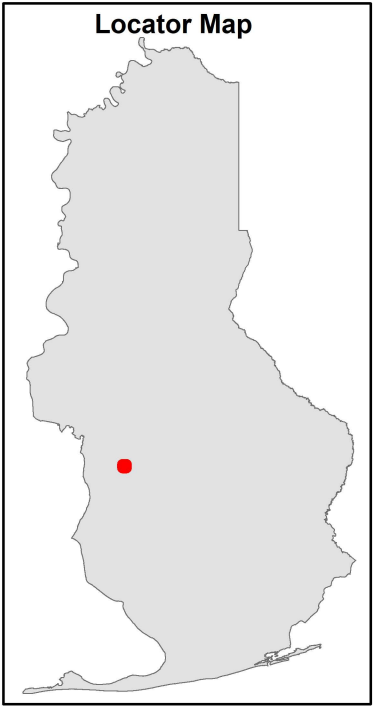
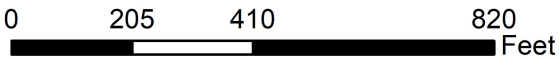
 Place of Worship

 School Locations

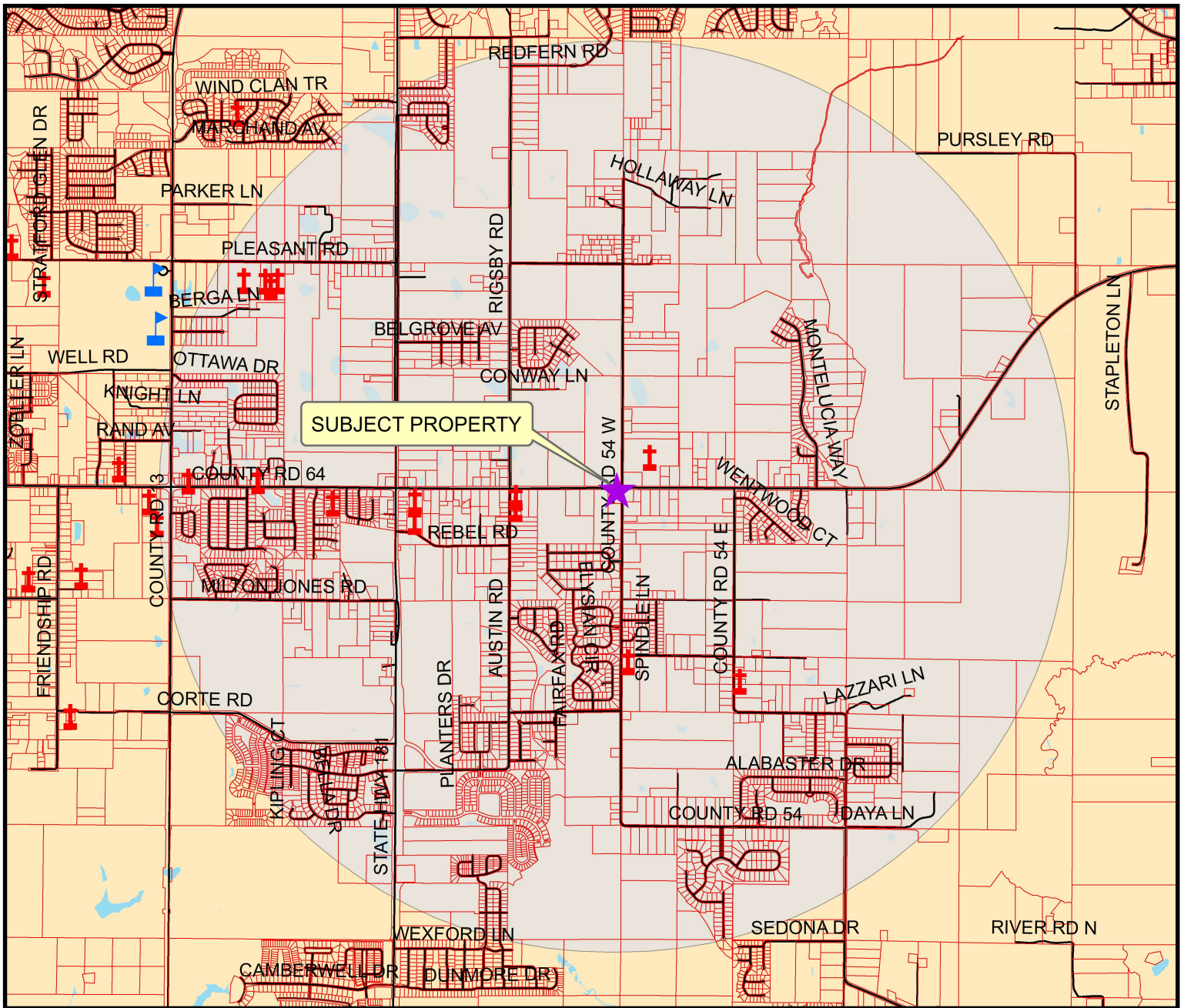
 Roads

 Parcels

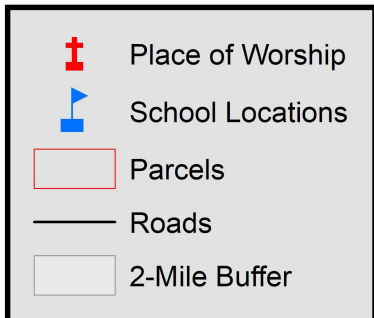
**TRIPLE B CONVENIENCE STORE, INC dba
TRIPLE B #3
10930 COUNTY RD 64, DAPHNE, AL 36526
ABC LICENSE**



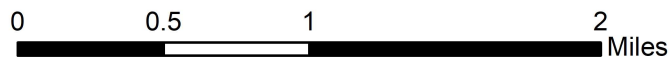
The information contained in this representation of digital data distributed by the Baldwin County Commission's Planning and Zoning Department is derived from a variety of public and private sources and is considered to be dependable. However, the accuracy, completeness, and currency thereof are not guaranteed. The Baldwin County Commission makes no warranties, expressed or implied, as to the accuracy, completeness, currency, reliability, or suitability of information or data contained in or generated from the County Geographic Database for any particular purpose. Additionally, the Baldwin County Commission or any agent, servant, or employee thereof assume no liability associated with the use of this data, and assume no responsibility to maintain it in any matter or form. For more information concerning this map call 251.580.1655.



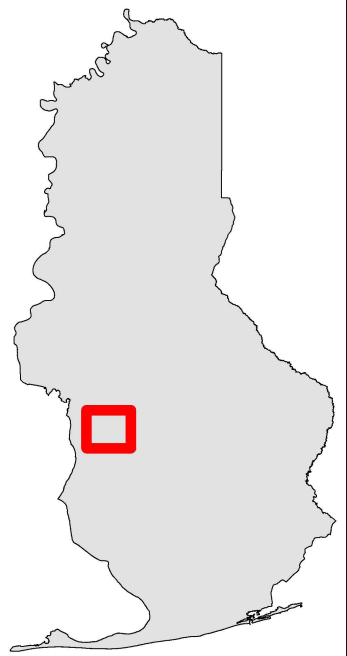
BALDWIN COUNTY COMMISSION
PLANNING AND ZONING DEPARTMENT



**TRIPLE B CONVENIENCE STORE, INC dba
TRIPLE B #3
10930 COUNTY RD 64, DAPHNE, AL 36526
ABC LICENSE**



Locator Map



The information contained in this representation of digital data distributed by the Baldwin County Commission's Planning and Zoning Department is derived from a variety of public and private sources and is considered to be dependable. However, the accuracy, completeness, and currency thereof are not guaranteed. The Baldwin County Commission makes no warranties, expressed or implied, as to the accuracy, completeness, currency, reliability, or suitability of information or data contained in or generated from the County Geographic Database for any particular purpose. Additionally, the Baldwin County Commission or any agent, servant, or employee thereof assume no liability associated with the use of this data, and assume no responsibility to maintain it in any matter or form. For more information concerning this map call 251.580.1655.