

BALDWIN COUNTY COMMISSION
PLANNING AND ZONING DEPARTMENT

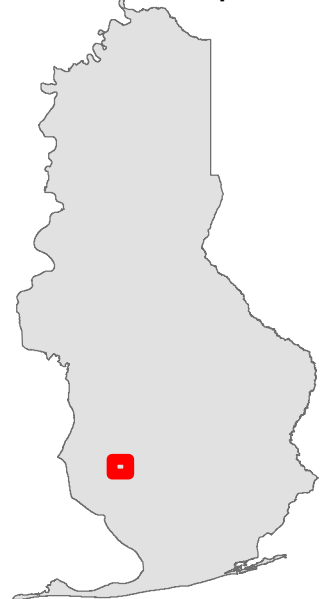


**SWEARINGEN AND NOLAN INC dba BID
DADDY'S GRILL
16542 FERRY RD., FAIRHOPE, AL 36532
ABC LICENSE**

0 750 1,500 3,000
Feet




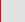
Place of Worship	Rural Agricultural District (RA)	Residential Manufactured Housing Park District (RMH)
School Locations	Conservation Resource District (CR)	Marine Recreation District (MR)
Unincorporated Baldwin County	Residential Single Family Estate District (RSF-E)	Outdoor Recreation District (OR)
Roads	Residential Single Family District (RSF-1)	Tourist Resort District (TR)
Water	Residential Single Family District (RSF-2)	Professional Business District (B-1)
City Limits	Residential Single Family District (RSF-3)	Neighborhood Business District (B-2)
Parcels	Residential Single Family District (RSF-4)	General Business District (B-3)
Rural District (RR)	Residential Two Family District (RTF-4)	Major Commercial District (B-4)
	Residential Single Family District (RSF-6)	Light Industrial District (M-1)
	Residential Two Family District (RTF-6)	General Industrial District (M-2)
	Residential Multiple Family District (RMF-6)	

Locator Map

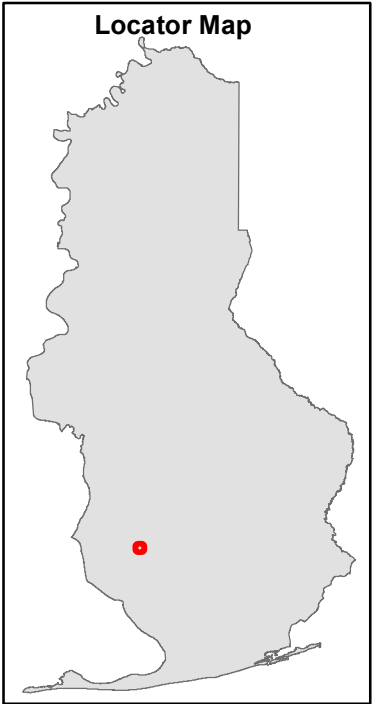
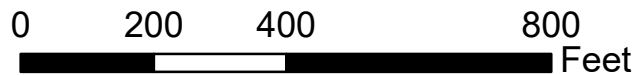


The information contained in this representation of digital data distributed by the Baldwin County Commission's Planning and Zoning Department is derived from a variety of public and private sources and is considered to be dependable. However, the accuracy, completeness, and currency thereof are not guaranteed. The Baldwin County Commission makes no warranties, expressed or implied, as to the accuracy, completeness, currency, reliability, or suitability of information or data contained in or generated from the County Geographic Database for any particular purpose. Additionally, the Baldwin County Commission or any agent, servant, or employee thereof assume no liability associated with the use of this data, and assume no responsibility to maintain it in any matter or form. For more information concerning this map call 251.580.1655.

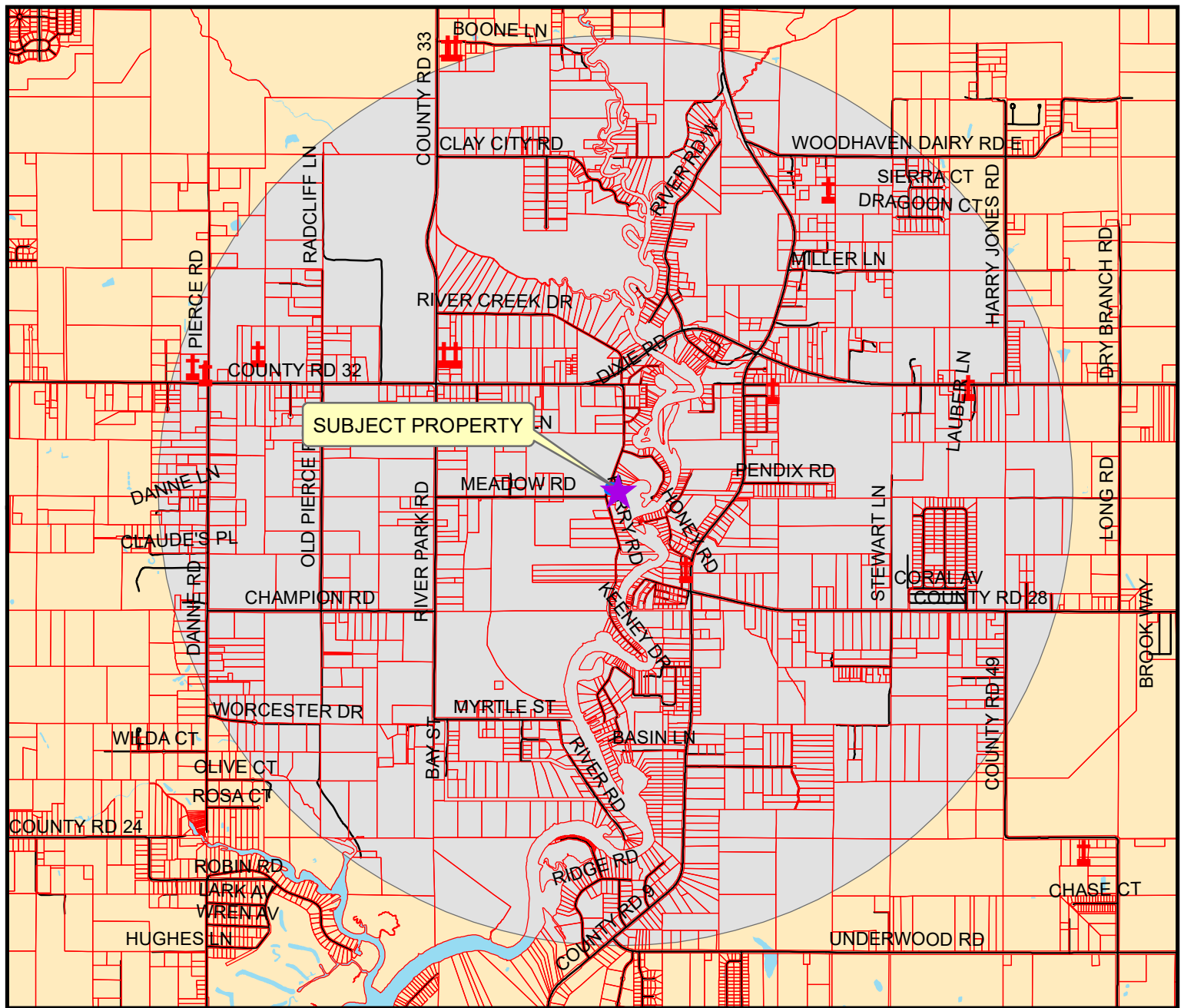


-  Place of Worship
-  School Locations
-  Roads
-  Parcels

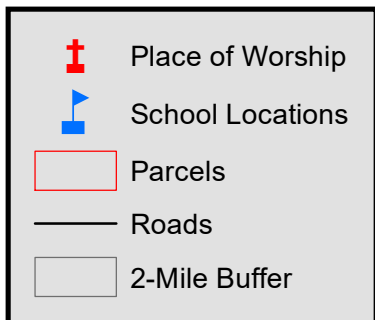
**SWEARINGEN AND NOLAN INC dba BID
DADDY'S GRILL
16542 FERRY RD., FAIRHOPE, AL 36532
ABC LICENSE**



The information contained in this representation of digital data distributed by the Baldwin County Commission's Planning and Zoning Department is derived from a variety of public and private sources and is considered to be dependable. However, the accuracy, completeness, and currency thereof are not guaranteed. The Baldwin County Commission makes no warranties, expressed or implied, as to the accuracy, completeness, currency, reliability, or suitability of information or data contained in or generated from the County Geographic Database for any particular purpose. Additionally, the Baldwin County Commission or any agent, servant, or employee thereof assume no liability associated with the use of this data, and assume no responsibility to maintain it in any matter or form. For more information concerning this map call 251.580.1655.



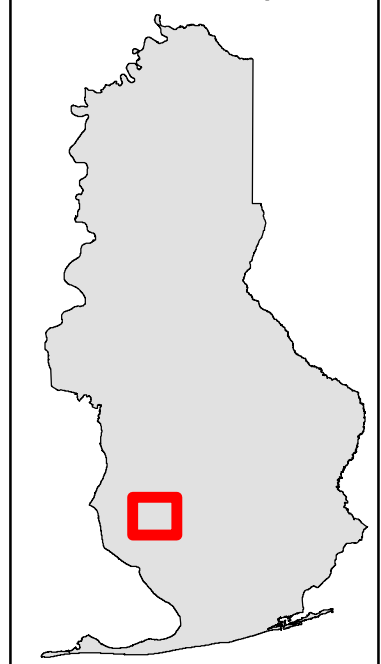
BALDWIN COUNTY COMMISSION
PLANNING AND ZONING DEPARTMENT



**SWEARINGEN AND NOLAN INC dba BID
DADDY'S GRILL
16542 FERRY RD., FAIRHOPE, AL 36532
ABC LICENSE**



Locator Map



The information contained in this representation of digital data distributed by the Baldwin County Commission's Planning and Zoning Department is derived from a variety of public and private sources and is considered to be dependable. However, the accuracy, completeness, and currency thereof are not guaranteed. The Baldwin County Commission makes no warranties, expressed or implied, as to the accuracy, completeness, currency, reliability, or suitability of information or data contained in or generated from the County Geographic Database for any particular purpose. Additionally, the Baldwin County Commission or any agent, servant, or employee thereof assume no liability associated with the use of this data, and assume no responsibility to maintain it in any matter or form. For more information concerning this map call 251.580.1655.