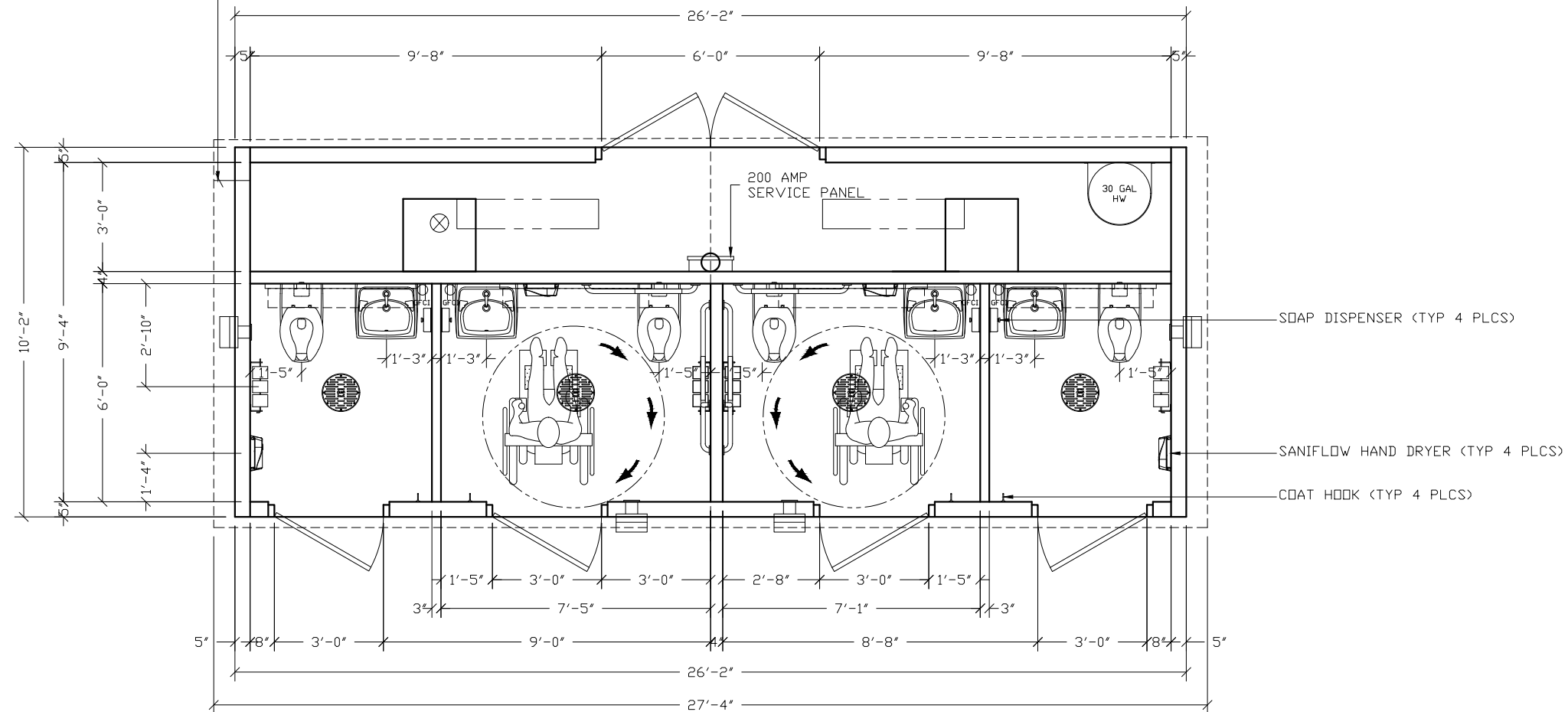


WOODFORD B65 LOCKABLE
EXTERIOR HOSE BIB



Precast Products

6707 E. Flamingo Ave. Bldg 300, Nampa, ID 83687
901 N. Highway 77 Hillsboro, TX 76645
362 Waverly Road Williamstown, WV 26187

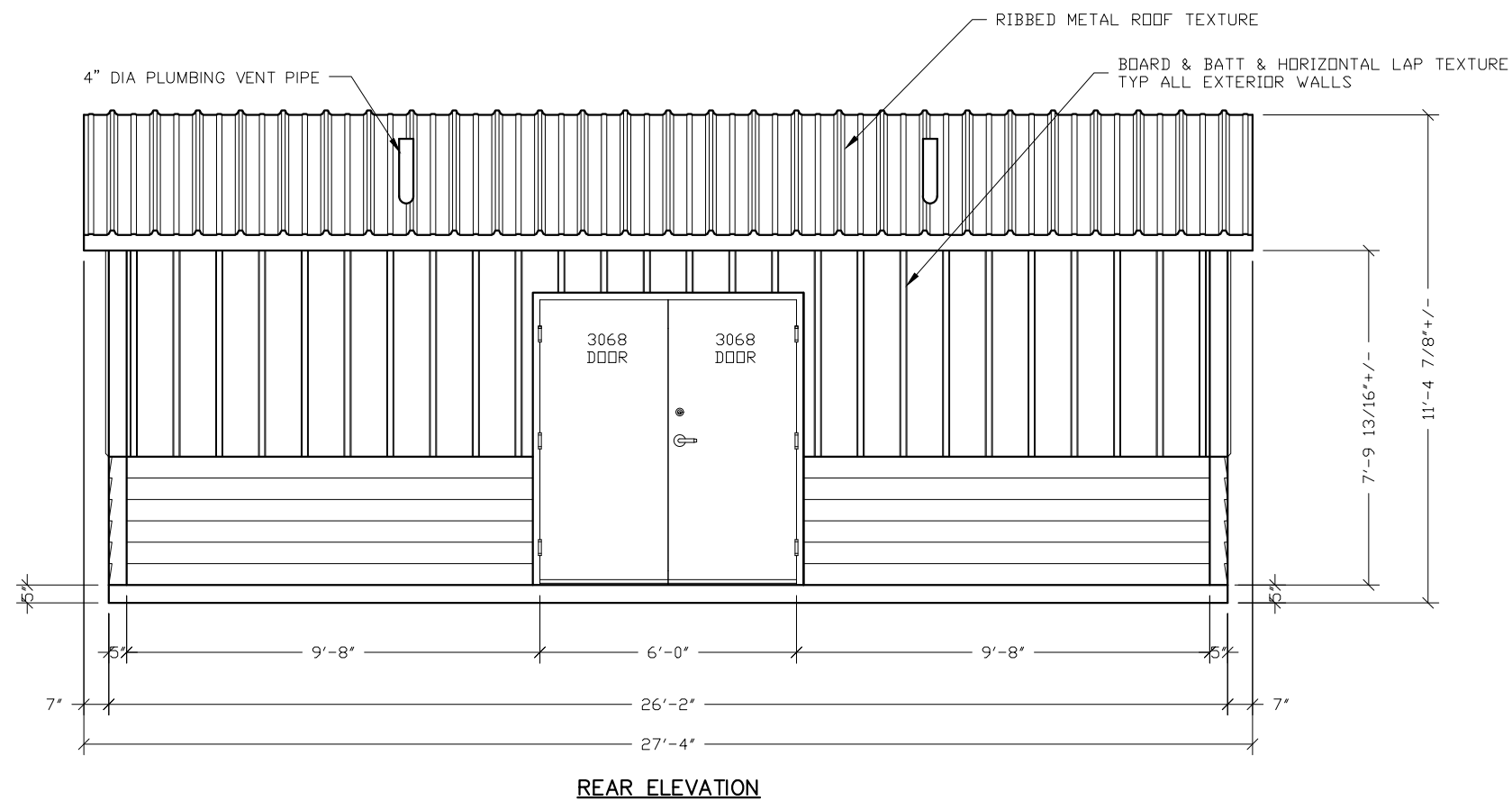
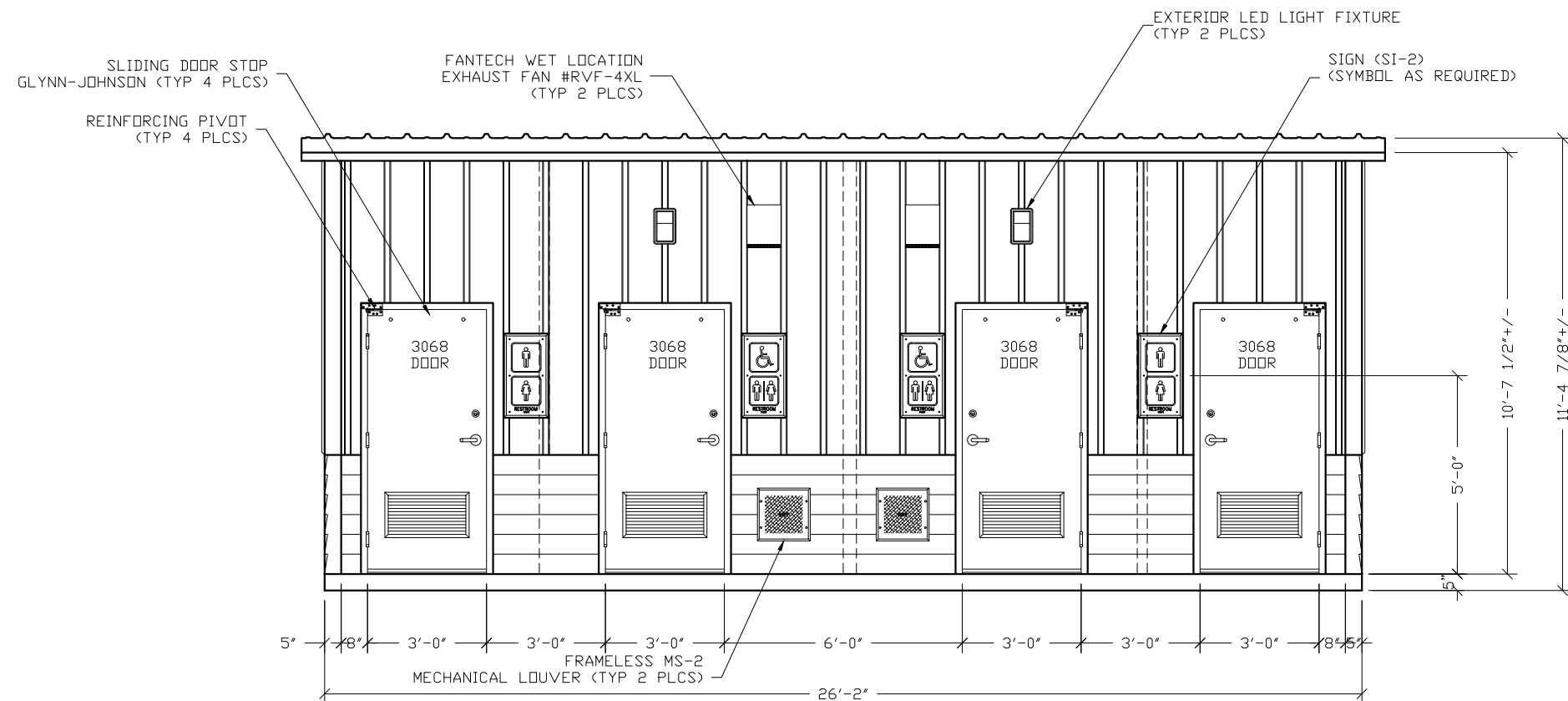
PROJECT TITLE
SANTIAGO
PROPOSAL NUMBER 21-128P

NOTICE
The information contained herein is proprietary and the exclusive property of CXT Incorporated. The information may only be used by the original recipient for the purpose intended. Reproduction or distribution of this information is strictly prohibited without the prior written consent of CXT Incorporated. By allowing use of this information, CXT Incorporated grants no warranty, express or implied, including a warranty of merchantability or of fitness for a particular purpose.
CXT Incorporated

| | | | |
|---------|-------------|----------|------------|
| REV. | DESCRIPTION | APPROVAL | DATE |
| SCALE | 3/8"=1'-0" | DATE | 05-17-21 |
| DRAWN | FMS | FILE NO. | 21.128P.01 |
| CHECKED | MCT | PLOT | 32 |

FLOOR PLAN

| | | |
|---------|-------|------|
| DWG NO. | SHEET | REV. |
| S-03 | 3 | |



Precast Products

6707 E. Flamingo Ave. Bldg 300, Nampa, ID 83687
901 N. Highway 77 Hillsboro, TX 76645
362 Waverly Road Williamstown, WV 26187

PROJECT TITLE

ANTIAGO

PROPOSAL NUMBER 21-128P

NOTICE

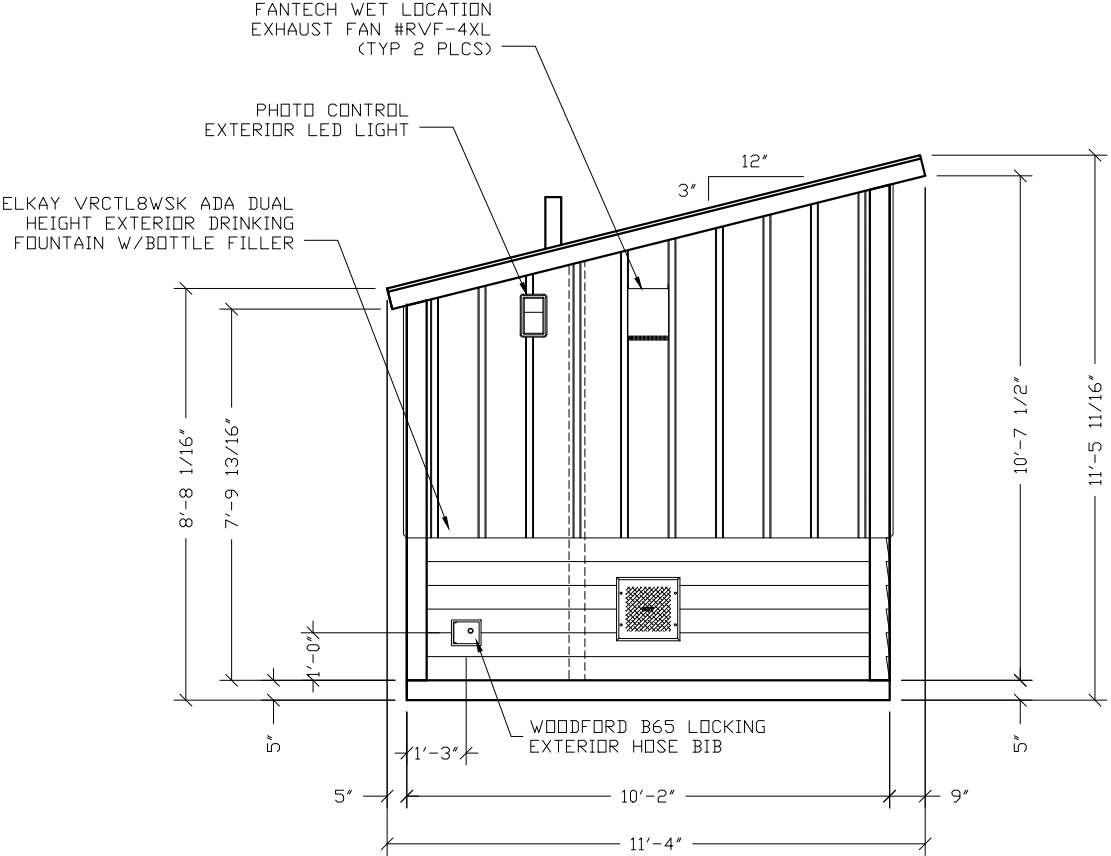
The information contained herein is proprietary and the exclusive property of CXT Incorporated. The information may only be used by the original recipient for the purpose intended. Reproduction or distribution of this information is strictly prohibited without the prior written consent of CXT Incorporated. By allowing use of this information, CXT Incorporated grants no warranty, express or implied, including a warranty of merchantability or of fitness for a particular purpose.

CXT Incorporated

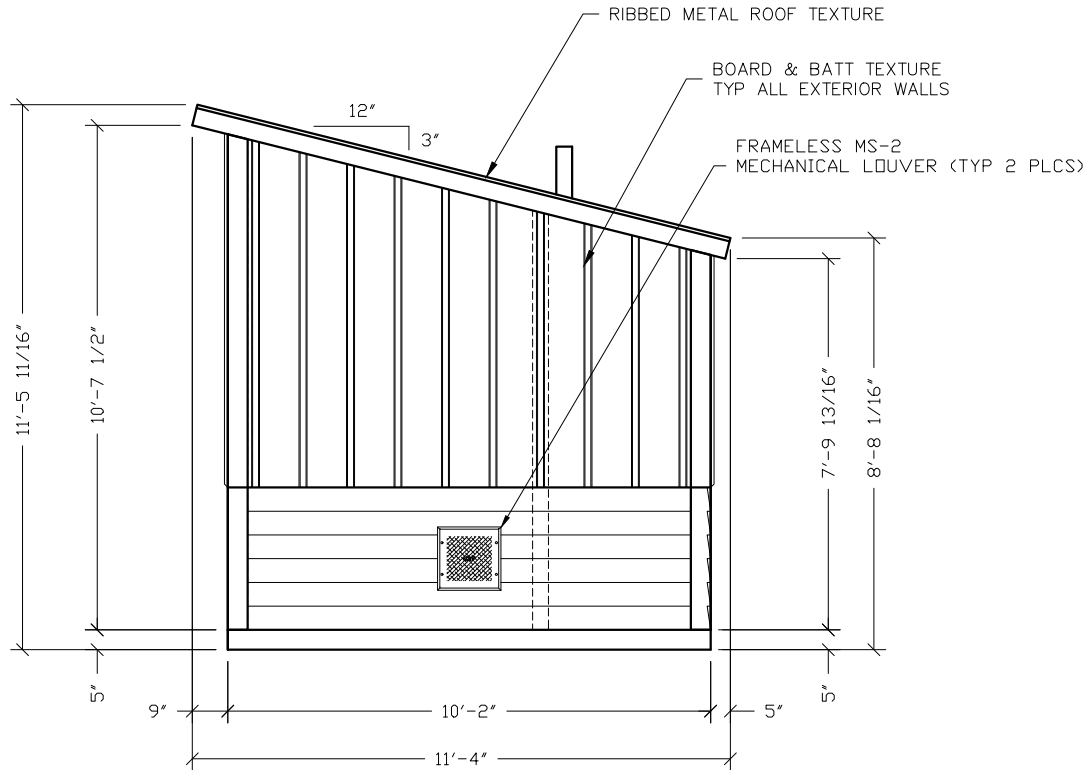
| | | | |
|---------|--------------|----------|------------|
| | | | |
| | | | |
| | | | |
| | | | |
| | | | |
| | | | |
| | | | |
| | | | |
| | | | |
| | | | |
| REV. | DESCRIPTION | APPROVAL | DATE |
| SCALE | 1/4" = 1'-0" | DATE | 05-17-21 |
| DRAWN | FM5 | FILE NO. | 21.128P.02 |
| CHECKED | MCT | PLOT | 48 |

BUILDING ELEVATIONS

| | | |
|---------|-------|------|
| DWG NO. | SHEET | REV. |
| S-04 | 4 | |



LH SIDE ELEVATION



RH SIDE ELEVATION



Precast Products

6707 E. Flamingo Ave. Bldg 300, Nampa, ID 83687
901 N. Highway 77 Hillsboro, TX 76645
362 Waverly Road Williamstown, WV 26187

PROJECT TITLE
SANTIAGO
PROPOSAL NUMBER 21-128P

NOTICE
The information contained herein is proprietary and the exclusive property of CXT Incorporated. The information may only be used by the original recipient for the purpose intended. Reproduction or distribution of this information is strictly prohibited without the prior written consent of CXT Incorporated. By allowing use of this information, CXT Incorporated grants no warranty, express or implied, including a warranty of merchantability or of fitness for a particular purpose.

| CXT Incorporated | | | |
|------------------|-------------|----------|------------|
| REV. | DESCRIPTION | APPROVAL | DATE |
| SCALE | 1/4"=1'-0" | DATE | 05-17-21 |
| DRAWN | FMS | FILE NO. | 21.128P.03 |
| CHECKED | MCT | PLOT | 48 |

BUILDING ELEVATIONS

| DWG NO. | SHEET | REV. |
|---------|-------|------|
| S-05 | 5 | |